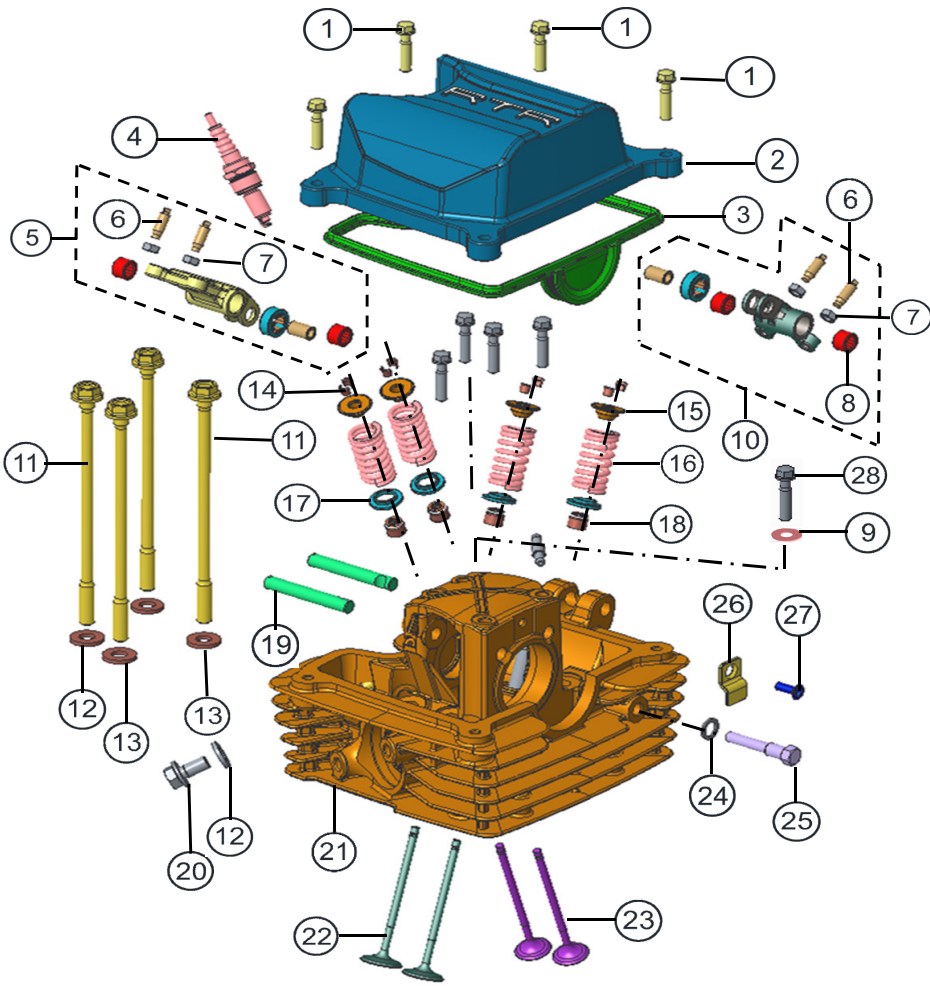


TVS

Apache
RTA

PARTS CATALOGUE - N112

FIG.NO. 01



CYLINDER HEAD ASSEMBLY

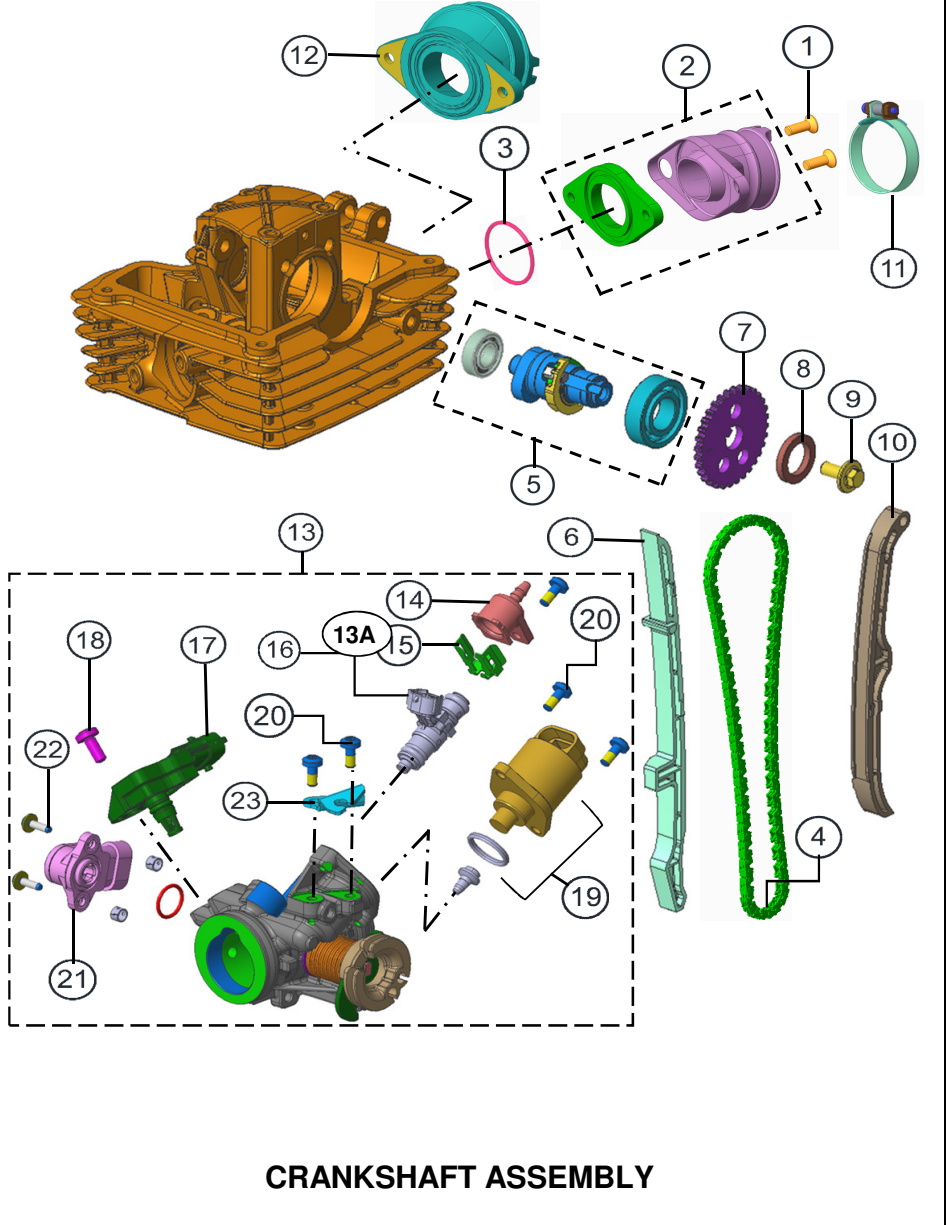
CYLINDER HEAD ASSEMBLY

FIG.NO. 01

REF NO.	PART NO.	DESCRIPTION	NO. OFF		REMARKS
			APACHE 200		
			DISC	EFI DISC	
1	M1200510	HEX FLANGE BOLT M6x25 ZNG	6	6	
2	N9011450	COVER CYLINDER HEAD	1	1	
3	N9011520	PACKING SEAL, COVER CYLINDER	1	1	
4	N3012100	SPARK PLUG	1	1	
5	N9010390	ROCKER ARM ASSY. EXHAUST	1	1	
6	S1010240	SCREW TAPPET ADJUSTING	4	4	
7	S1010250	NUT TAPPET ADJUSTING	4	4	
8	N4200050	NEEDLE ROLLER BEARING	4	4	
9	8200130	PUNCHED WASHER 6.5x11x1.6	2	2	
10	N9010370	ROCKER ARM ASSY. INTAKE	1	1	
11	N9010850	BOLT, CYLINDER HEAD	4	4	
12	M1010360	GASKET CYL HEAD NUT	2	2	
13	M1200060	PUNCHED WASHER 8.5x18x2.3	3	3	
14	N8011740	COTTER VALVE	8	8	
15	N8011570	RETAINER VALVE SPRING	4	4	
16	N4012000	SPRING VALVE	4	4	
17	N8011540	VALVE SEAT SPRING	4	4	
18	N3012050	VALVE STEM OIL SEAL	4	4	
19	N9011550	SHAFT ROCKER ARM	2	2	
20	G4200070	HEX FLANGE BOLT M8x1x15	1	1	
21	N9011820	CYLINDER HEAD COMP 2	1	1	
22	N9010330	VALVE EXHAUST	2	2	
23	N9010320	VALVE INTAKE	2	2	
24	M1080370	GASKET OIL PIPE UNION	1	1	
25	M1080510	BOLT CAM CHAIN TENSIONER	1	1	
26	N9011580	STOPPER CAMSHAFT	1	1	
27	N8200090	CRR CSK HEAD SCREW M5x15	1	1	
28	M1200470	HEX FLANGE BOLT M6x30	2	2	
29	N9011480	CYLINDER HEAD ASSY. KIT	1	1	**

** - REFER KIT AND KIT CONTENTS

FIG.NO. 02

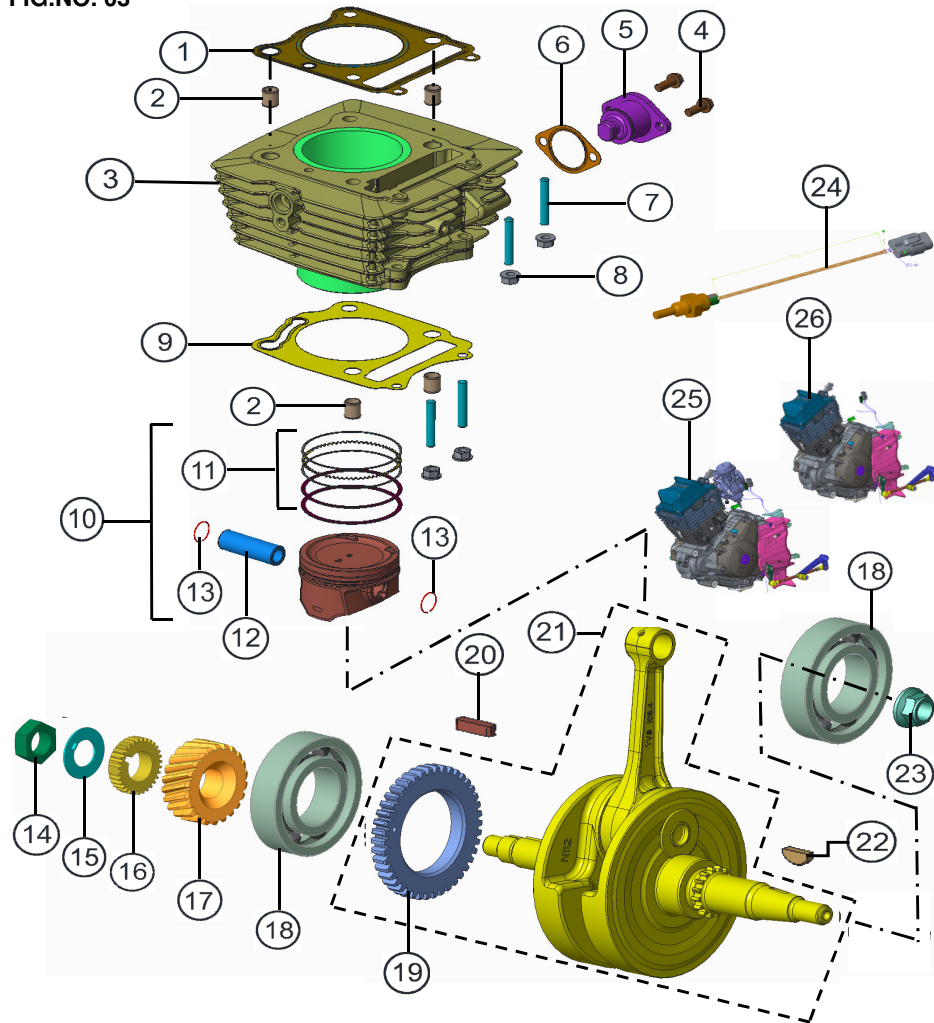


CRANKSHAFT ASSEMBLY

FIG.NO. 02

REF NO.	PART NO.	DESCRIPTION	NO. OFF		REMARKS
			APACHE 200		
			DISC	EFI DISC	
1	0332228	REC CSK HD SCR M6x16 6.8	2	2	
2	N9041950	PIPE INTAKE COMP	1		
3	N9041990	O-RING PIPE 37.5x2.4	1	1	
4	N9011570	CAMCHAIN	1	1	
5	N9010410	CAMSHAFT COMP	1	1	
6	N9011590	GUIDE CAMCHAIN	1	1	
7	N9011560	SPROCKET CAMSHAFT	1	1	
8	N9011490	WASHER CAMSHAFT SPRKT	1	1	
9	N9200480	HEX FL BOLT M8 1.25 LH	1	1	
10	N9011600	TENSIONER CAMCHAIN	1	1	
11	G4041110	CLAMP PIPE INTAKE	1	1	
12	N9042210	PIPE INTAKE COMP		1	EFI
13	N9042190	BODY THROTTLE ASSY.		1	"
13A	N9042380	BODY THROTTLE ASSY.		1	" BSIV
14	N9042390	CAP INJECTOR		1	"
15	N9042410	HOLDER INJ.		1	"
16	N9060750	INJECTOR WITH O RING		1	"
17	N9060780	T- MAP SENSOR WITH ORING		1	"
18	M1201050	SCREW		1	"
19	N7060100	IDLE STOPPER UNIT WITH O RING		1	"
20	N9325640	SCREW THROTTLE BODY M5x12		5	"
21	N9162380	THROTTLE POTENTIOMETER WITH O RING		1	"
22	N9325650	SCREW THROTTLE BODY M5x12		2	"
23	N9325630	BRKT THROTTLE HOLDER		1	"

FIG.NO. 03



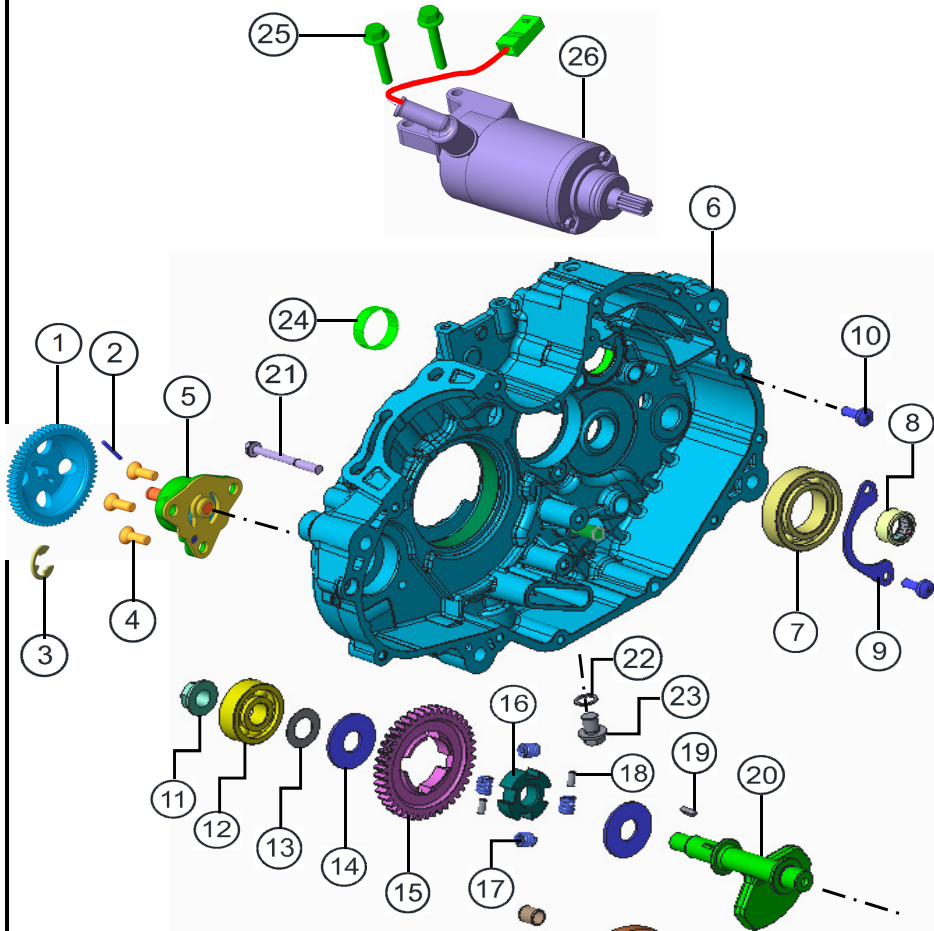
CYLINDER BLOCK & CRANKSHAFT ASSY.

CYLINDER BLOCK & CRANKSHAFT ASSY.

FIG.NO. 03

REF NO.	PART NO.	DESCRIPTION	NO. OFF		REMARKS
			APACHE 200		
			DISC	EFI DISC	
1	N9010630	GASKET CYLINDER HEAD	1	1	
2	S1200270	TUBULAR DOWEL	4	4	
3	N9011390	CYLINDER COMP.	1	1	
4	M7200720	HEX FL. BOLT M6x16	2	2	
5	N9011310	ADJUSTER ASSY TENSIONER	1	1	
6	N3011600	GASKET TENSIONER ADJUSTOR	1	1	
7	M1200780	STUD BOLT CYL HEAD	4	4	
8	M1200900	HEX FLANGE NUT M6	4	4	
9	N9010720	GASKET CYLINDER HEAD	1	1	
10	N9020300	PISTON KIT - STD	1	1	
10A	N9325300	PISTON KIT - I O/S	1	1	
10B	N9325310	PISTON KIT - II O/S	1	1	
11	N9325320	RING SET PISTON - STD	1	1	
11A	N9325330	RING SET PISTON - I O/S	1	1	
11B	N9325340	RING SET PISTON - II O/S	1	1	
12	G4020090	PISTON PIN	1	1	
13	M1010440	CIRCLIP 17x1.0 PISTON PIN	2	2	
14	M1200250	HEX NUT M16 7 LH	1	1	
15	M1080630	WASHER PRIMARY DRIVE GEAR	1	1	
16	M1080010	GEAR OILPUMP DRIVE	1	1	
17	N9081580	GEAR PRIMARY DRIVE 1	1	1	
18	M7200530	BALL BEARING 35x72x17 NORMAL 6207	2	2	
19	N9081490	GEAR BALANCER SHAFT DRIVEN	1	1	
20	N3080170	KEY 4x4x15	1	1	
21	N9020380	CRANKSHAFT COMP.	1	1	
22	M1200760	WOODRUFF KEY	1	1	
23	M1200770	HEX FLANGE NUT M12x1.25	1	1	
24	R4060090	THERMAL SENSOR	1	1	
25	N9180990	ENGINE ASSY. BSIV	1		BSIV
26	N9180840	ENGINE ASSY. 200 ES 5 SP EFI		1	BSIV

FIG.NO.04



CRANKCASE RH & BALANCER SHAFT ASSY.

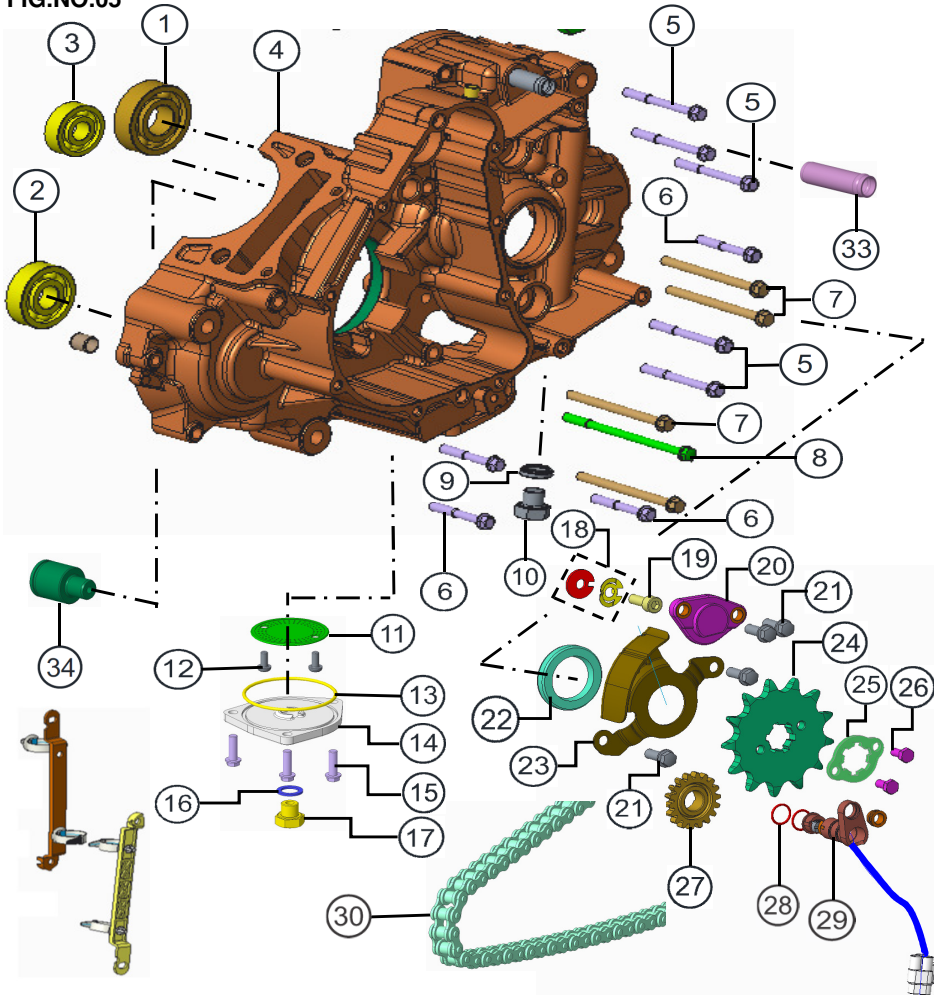
CRANKCASE RH & BALANCER SHAFT ASSY.

FIG.NO.04

REF NO.	PART NO.	DESCRIPTION	NO. OFF		REMARKS
			APACHE 200		
			DISC	EFI DISC	
1	N9081400	GEAR, OIL PUMP DRIVEN	1	1	
2	0064014	PIN CLUT SPG	1	1	
3	M1200730	CIRCLIP 6.0x0.8SES P2107 TYPE E	1	1	
4	0332228	HEX FL. BOLT M6x16	3	3	
5	N9081300	OILPUMP ASSY.	1	1	
6	N9325460	KIT CRANKCASE ASSY. RH	1	1	**
7	M1200290	BALL BEARING 30x55x13 C3 6006	1	1	
8	M7200260	NEEDLE ROLLER BEARING NB 15x23x12	1	1	
9	M7080530	RETAINER COUNTER BEARING	1	1	
10	0331748	CRPH SCR M6x16 6.8 ZNB	2	2	
11	M1200770	HEX FLANGE NUT M12x1.25	1	1	
12	N9200590	BALL BEARING 15x42x13	1	1	
13	K080410	SHIM 15x27x0.5 OILED	1	1	
14	N9081070	RETAINER SPRING	2	2	
15	N9081480	GEAR BALANCER SHAFT DRIVEN	1	1	
16	N9081500	RACE BALANCER GEAR DRIVEN	1	1	
17	N9081080	SPRING BALANCER SHAFT	4	4	
18	N9081160	PIN BALANCER SHAFT DRIVEN	2	2	
19	M1200760	WOODRUFF KEY	1	1	
20	N9020399	BALANCER SHAFT	1	1	
21	M1200430	HEX FL. BOLT M6x55	1	1	
22	N2081600	GASKET OIL GALLERY PLUG	1	1	
23	M1200070	HEX FLANGE BOLT M10x12	1	1	
24	M7200690	BEARING BUSH CAM GEAR SHIFT 27x25	1	1	
25	M1200510	HEX FLANGE BOLT M6x25 ZNG	2	2	
26	N9060820	STARTER MOTOR	1	1	

** - REFER KIT AND KIT CONTENTS

FIG.NO.05



CRANKCASE LH ASSEMBLY

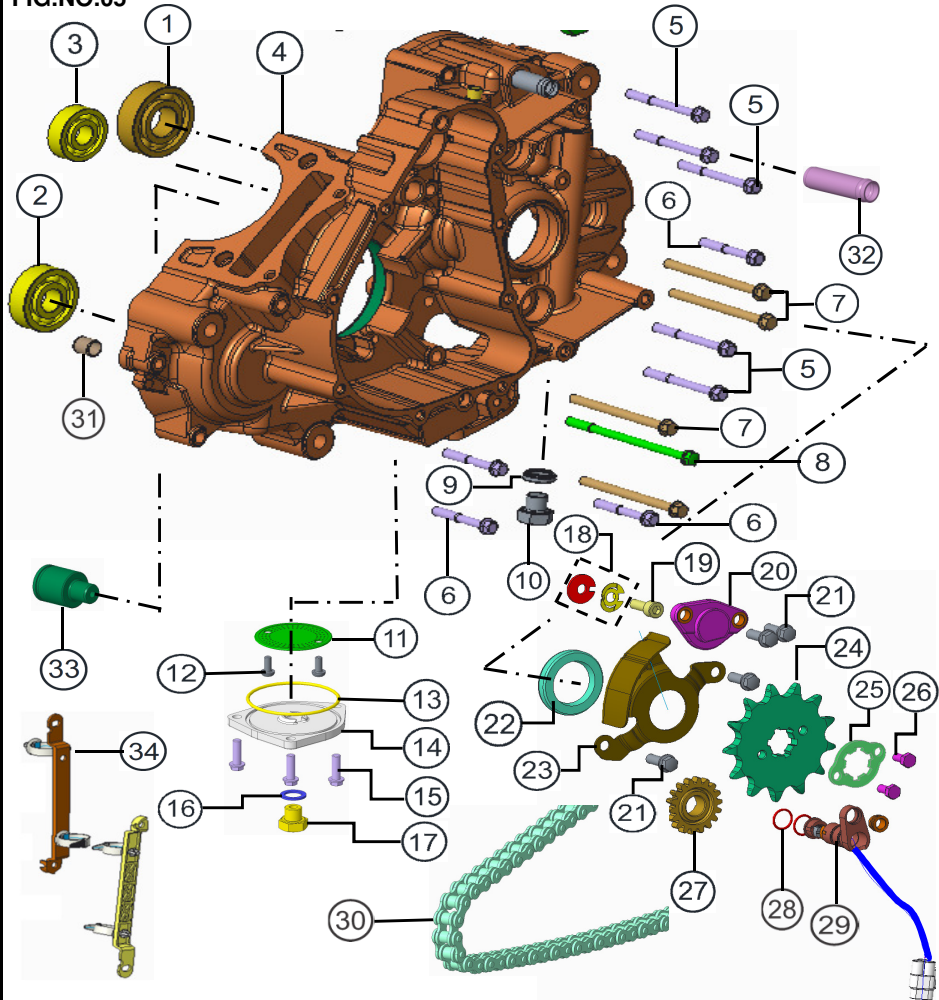
CRANKCASE LH ASSEMBLY

FIG.NO.05

REF NO.	PART NO.	DESCRIPTION	NO. OFF		REMARKS
			APACHE 200		
			DISC	EFI DISC	
1	M1200260	BALL BEARING 20x47x14 C3 6204 RS	1	1	
2	K3200770	BALL BEARING 6201 RS1 C3 MTF9	1	1	
3	420601000	BALL BEARING 15X42x13 C3 6302	1	1	
4	N9325450	KIT CRANKCASE LH ASSY.	1	1	**
5	M7200730	HEX FL. BOLT M6x55	5	5	
6	M7200700	HEX FL. BOLT M6x40	4	4	
7	M1200440	HEX FLANGE BOLT M6x75	4	4	
8	M1200450	HEX FLANGE BOLT M6x95	1	1	
9	M1080420	GASKET BREATHER PLUG	1	1	
10	M1200080	HEX SCREW M12x1.25x10 8.8	1	1	
11	M1080560	STRAINER COMP ENGINE OIL	1	1	
12	0331708	CRPH SCR M5x12 6.8 ZNB	2	2	
13	M1080610	O-RING 60.5x2.4	1	1	
14	M1080570	CAP OIL STRAINER	1	1	
15	M1200530	HEX FLANGE BOLT M6x20	3	3	
16	S1011290	SEALING WASHER	1	1	
17	S1200900	PLUG COMP OIL DRAIN (MAGNETIC)	1	1	
18	N8081090	CONTACT GEAR SHIFT SWITCH COMP	1	1	
19	M1200790	HEX SOC HD CAP SCR M6x16 P 8.8	1	1	
20	N9060680	SWITCH GEAR POSITION	1	1	
21	M7200720	HEX FL. BOLT M6x16	4	4	
22	M7200250	OILSEAL 20x40x6	1	1	
23	N9081680	RETAINER OILSEAL DRIVESHAFT	1	1	
24	N9081560	SPROCKET ENGINE 13T	1	1	
25	M7080870	LOCK PLATE SPROCKET	1	1	

** - REFER KIT AND KIT CONTENTS

FIG.NO.05



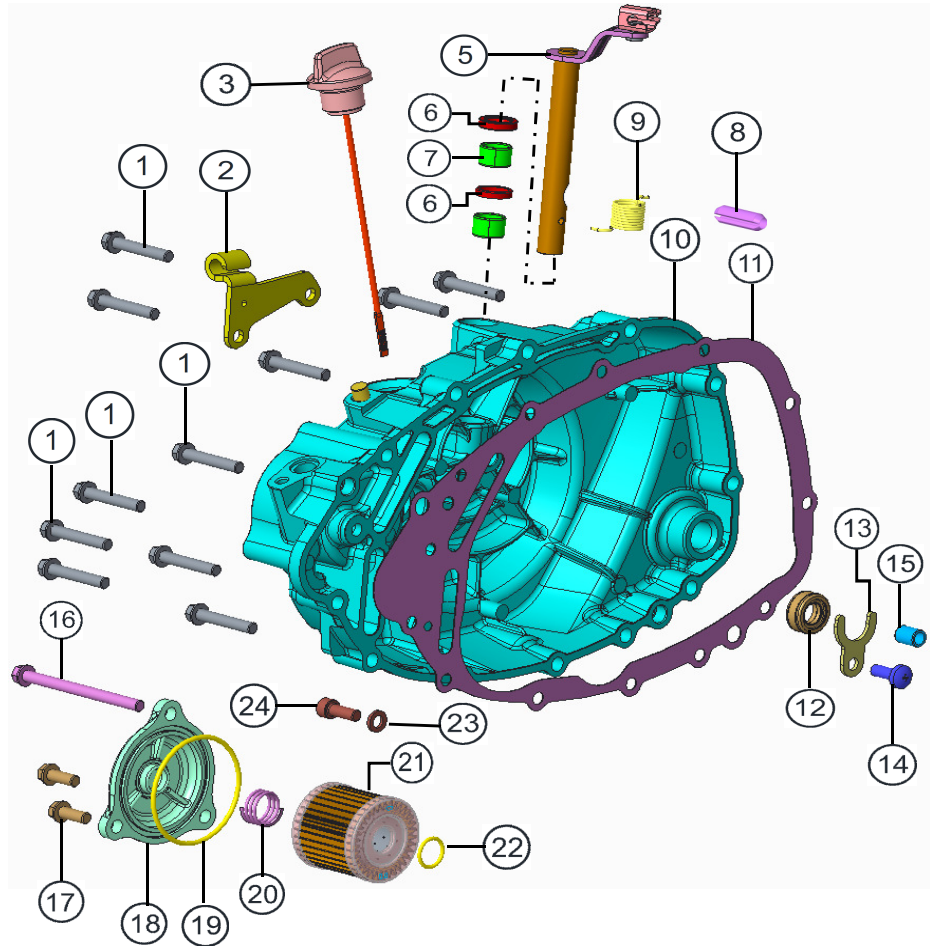
CRANKCASE LH ASSEMBLY

CRANKCASE LH ASSEMBLY

FIG.NO.05

REF NO.	PART NO.	DESCRIPTION	NO. OFF		REMARKS
			APACHE 200		
			DISC	EFI DISC	
26	M1200940	HEX SCREW M5x10	2	2	
27	N9081660	GEAR IDLER	1	1	
28	N9325780	O RING SPEED SENSOR	2	2	
29	N9060700	SPEED SENSOR	1	1	
30	N9113980	CHAIN ASSY 116	1	1	
31	S1200270	TUBULAR DOWEL	2	2	
32	M1080360	UNION BREATHER	1	1	
33	N9081670	SHAFT IDLER GEAR	1	1	
34	N9325790	CABLE GUIDE	2	2	
	36 N9325260	CHAIN SPROCKET KIT	1	1	

FIG.NO.06



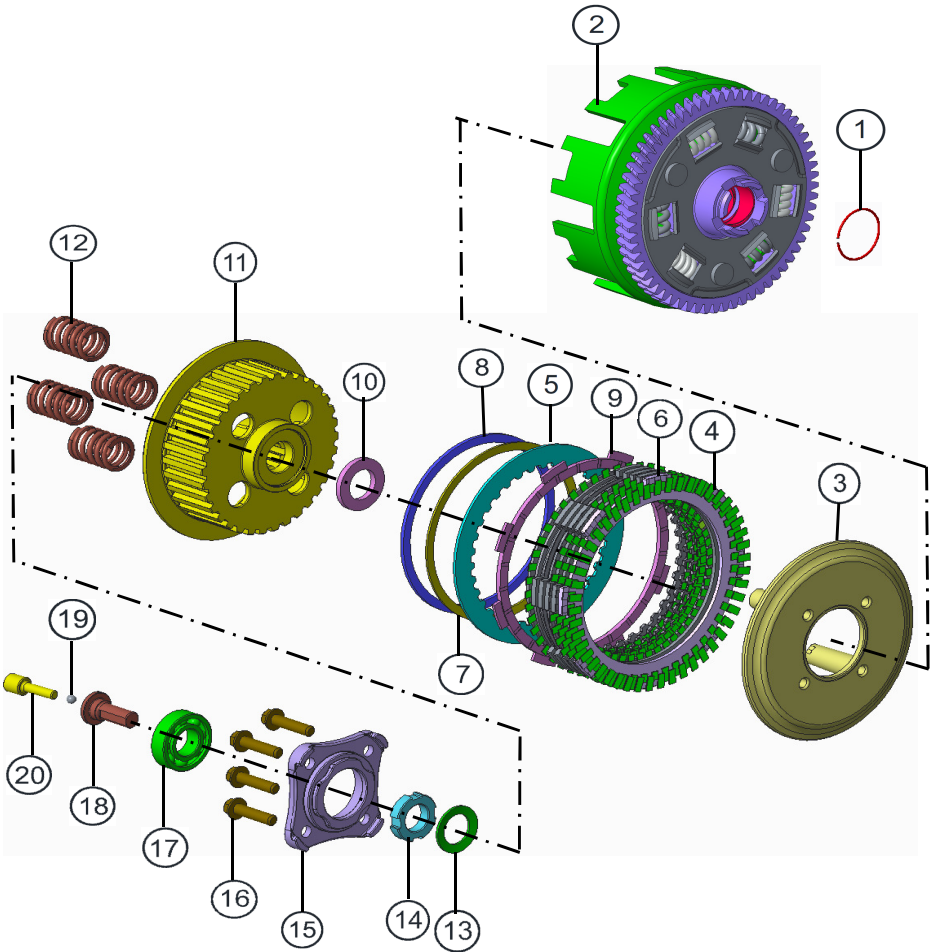
COVER CLUTCH ASSEMBLY

COVER CLUTCH ASSEMBLY

FIG.NO.06

REF NO.	PART NO.	DESCRIPTION	NO. OFF		REMARKS
			APACHE 200		
			DISC	EFI DISC	
1	N5200170	HEX FL BOLT M6x35	11	11	N.I
2	N9070040	BRKT CLUTCH CABLE	1	1	
3	N2081150	GAUGE OIL LEVEL	1	1	
4	M1080400	O-RING 16.8x3.1	1	1	
5	N9070090	ROD CLUTCH RELEASE COMP	1	1	
6	M7200490	OILSEAL 12x18x4	1	1	
7	M7200510	BEARING BUSH 12x15x10	2	2	
8	M7200500	SPRING DOWEL	1	1	
9	M7070380	SPRING CLUTCH CABLE RETURN	1	1	
10	N9030230	COVER CLUTCH	1	1	
11	N9030250	GASKET CLUTCH COVER	1	1	
12	N2200550	OIL SEAL CRANKSHAFT RH	1	1	
13	N9080670	RETAINER	1	1	
14	0331748	CRPH SCR M6x16 6.8 ZNB	1	1	
15	0074010	DOWEL PIN	2	2	
16	M1200440	HEX FLANGE BOLT M6x75	1	1	
17	M7200720	HEX FL. BOLT M6x16	2	2	
18	M70809607D	CAP OIL FILTER TITAN GREY	1	1	
19	M1080600	O-RING 52.6x2.4	1	1	
20	M1080620	SPRING OIL FILTER CAP	1	1	
21	M1080540	FILTER COMP ENGINE OIL	1	1	
22	M1080590	O-RING 13x1.9	1	1	
23	8200130	PUNCHED WASHER 6.5x11x1.6	1	1	
24	M1200790	HEX SOC HD CAP SCR M6x16	1	1	

FIG.NO.07



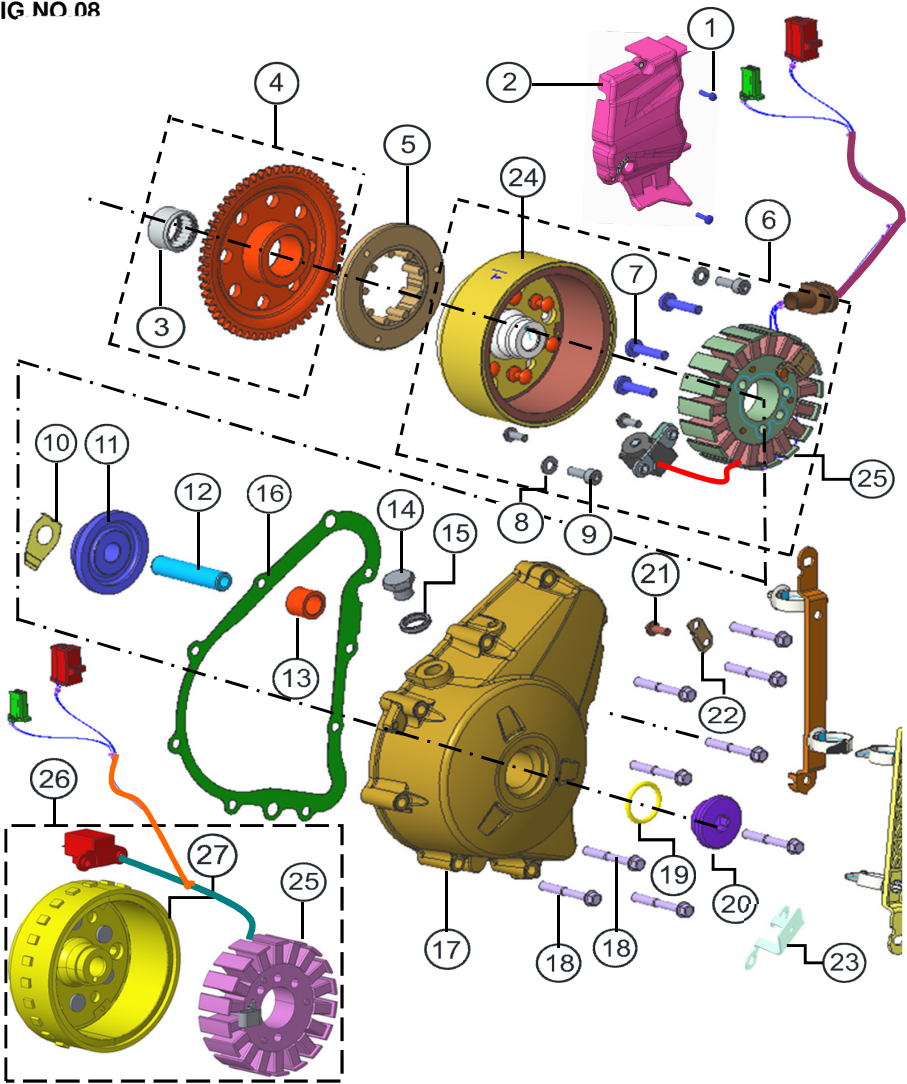
CLUTCH ASSEMBLY

CLUTCH ASSEMBLY

FIG.NO.07

REF NO.	PART NO.	DESCRIPTION	NO. OFF		REMARKS
			APACHE 200		
			DISC	EFI DISC	
1	3060510	CLIP PRIMARY DRIVEN GEAR	1	1	
2	N9070020	GEAR ASSY PRIMARY DRIVEN	1	1	
3	N9070210	DISC PRESSURE CLUTCH	1	1	
4	N9325530	PLATE CLUTCH DRIVE 1 (SET)	6	6	
5	N9325520	PLATE CLUTCH DRIVEN 1 (SET)	5	5	
6	N3070010	BASED CLUTCH PLATE	4	4	
7	---	SPRING CLUTCH JUDDER	1	1	N.S
8	---	WASHER CLUTCH JUDDER	1	1	N.S
9	---	PLATE CLUTCH DRIVE JUDDER	1	1	N.S
10	M7070240	WASHER CLUTCH HUB	1	1	
11	N9070170	HUB CLUTCH	1	1	
12	N9070220	SPRING CLUTCH	4	4	
13	M7070110	SPRING WASHER CLUTCH SHAFT	1	1	
14	M7070100	NUT CLUTCH SHAFT	1	1	
15	N9070230	PLATE CLUTCH RELEASE	1	1	
16	N2200500	HEX FLANGE BOLT M6x25 ZNG	4	4	
17	M1200380	BALL BEARING 15x32x9	1	1	
18	M7070120	ADAPTOR PIN CLUTCH RELEASE	1	1	
19	420404000	STEERING BALL	1	1	
20	M7070150	PIN CLUTCH RELEASE	1	1	

FIG NO 08



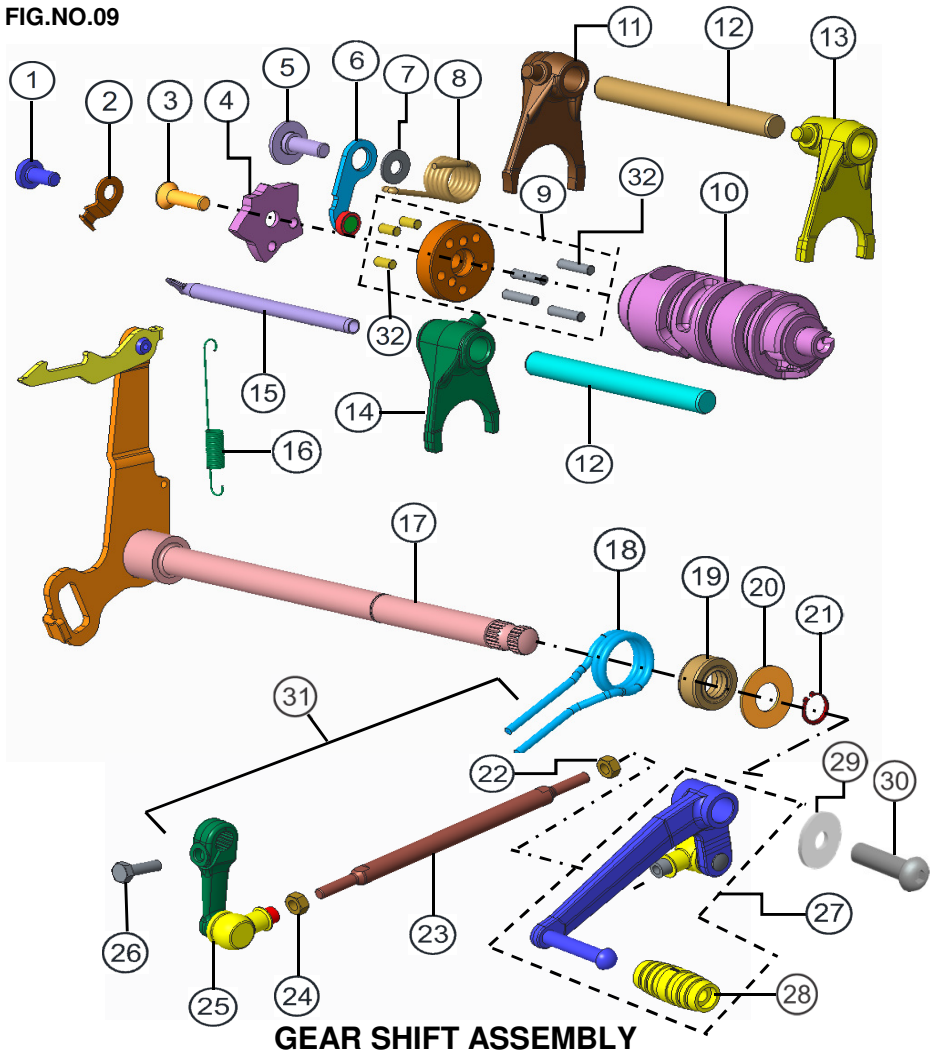
MAGNETO ASSEMBLY

MAGNETO ASSEMBLY

FIG.NO.08

REF NO.	PART NO.	DESCRIPTION	NO. OFF		REMARKS
			APACHE 200		
			DISC	EFI DISC	
1	M1200670	CRPH SCR M6x20	2	2	
2	N9081170	COVER ENGINE SPROCKET - U129	1	1	
3	M1200170	NEEDLE ROLLER BEARING NB 15x23x12	1	1	
4	M1080480	GEAR ASSY STARTER CLUTCH ES	1	1	
5	R1060110	ONEWAY CLUTCH	1	1	
6	N9060660	MAGNETO ASSY.	1		
7	M1200820	CRR PAN HEAD SCREW M6x25	3	3	
8	P1200050	WAVE SPRING WASHER 6.5	3	3	
9	M1200790	HEX SOC HD CAP SCR M6x16	3	3	
10	N9080440	STOPPER STARTER GEAR	1	1	
11	M1080460	GEAR STARTER IDLE FINISHED APACHE	1	1	
12	M1080430	PIN MAGNETO COVER	1	1	
13	M1080490	SPACER STARTER IDLE GEAR	1	1	
14	N2081680	PLUG TDC	1	1	
15	M1080420	GASKET BREATHER PLUG	1	1	
16	N9030320	GASKET MAGNETO COVER	1	1	
17	N9030330	COVER MAGNETO	1	1	
18	M7200700	HEX FL. BOLT M6x40	9	9	
19	N2081690	O-RING 22.7x3.1	1	1	
20	M7080980	PLUG CRANKSHAFT HOLE	1	1	
21	0331708	CRPH SCR M5x12 6.8 ZNB	4	4	
22	M1070100	CLAMP MAGNETO LEAD	1	1	
23	N9081710	CLAMP MAGNETO LEAD	1	1	
24	N9325220	ROTOR ASSEMBLY	1		
25	N9325210	STATOR ASSEMBLY	1	1	
26	N9060690	MAGNETO ASSY 2		1	EFI
27	N9325760	ROTOR ASSEMBLY		1	"

FIG.NO.09

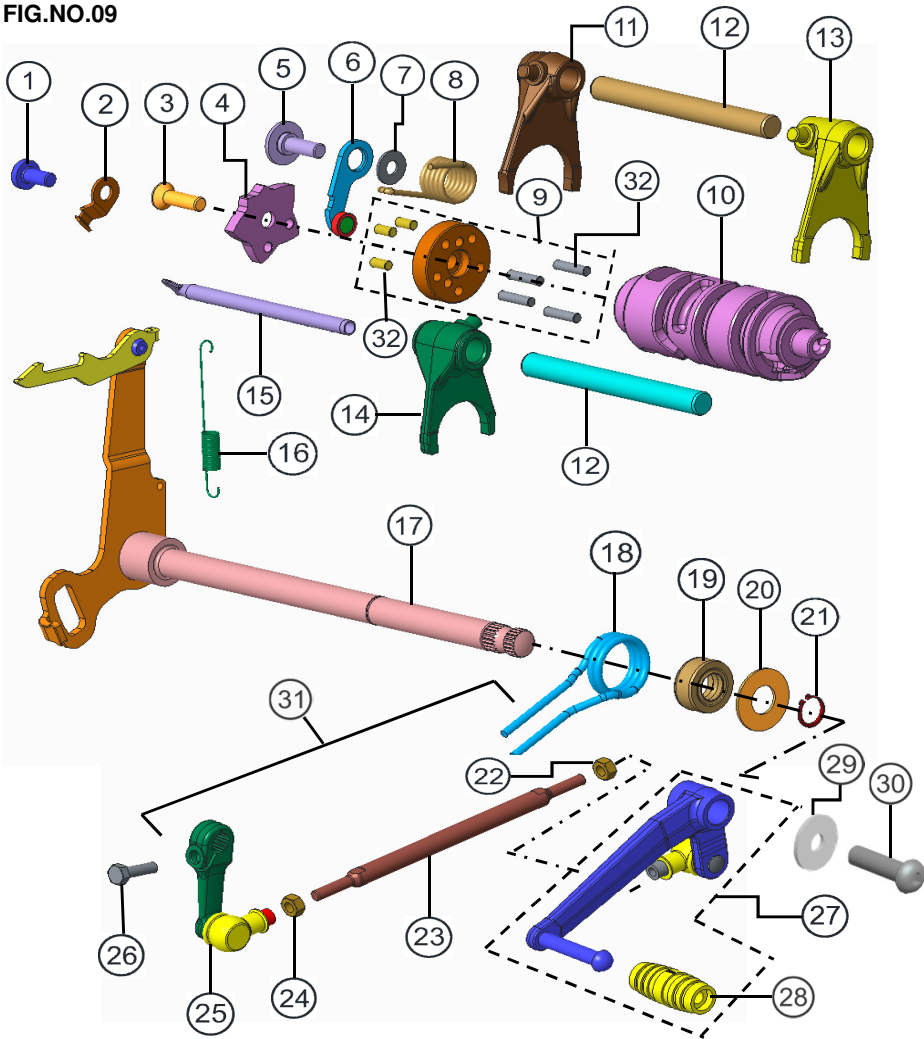


GEAR SHIFT ASSEMBLY

FIG.NO.09

REF NO.	PART NO.	DESCRIPTION	NO. OFF		REMARKS
			APACHE 200		
			DISC	EFI DISC	
1	P200270	SCREW FOR LAMP MOUNTING	1	1	
2	M1080740	RETAINER T/M OIL GUIDE	1	1	
3	0332248	REC CSK HD SCR M6x20	1	1	
4	M7081810	INDEX STAR	1	1	
5	M1080830	BOLT CAM CHAIN TENSIONER	1	1	
6	M6080090	STOPPER COMP GEARSHIFT	1	1	
7	M1200690	SHIM 6x14x1 OILED	1	1	
8	M7081290	SPRING GEARSHIFT CAM STOPPER	1	1	
9	M7081820	PIN HOLDER COMP	1	1	
10	N9081730	CAM GEARSHIFT	1	1	
11	M7080590	FORK GEAR SHIFT NO.2	1	1	
12	M7080520	SHAFT GEAR SHIFT FORK	2	2	
13	M7080580	FORK GEAR SHIFT NO.1	1	1	
14	M7080470	FORK GEAR SHIFT HIGH SPEED	1	1	
15	M7080690	GUIDE T/M OIL	1	1	
16	3040510	SPRING GEAR SHIFT PAWL RETURN	1	1	
17	M7081790	SHAFT GEARSHIFT COMP	1	1	
18	M7081840	SPRING GEAR SHIFT SHIFT RETURN	1	1	
19	N2081720	OIL SEAL GEAR SHIFT SHAFT	1	1	
20	R1080780	SHIM 12x26 x1	1	1	
21	M1200870	CIRCLIP 12x1.0	1	1	
22	420305700	HEX NUT M6	1	1	
23	M7081370	STUD GEAR SHIFT	1	1	
24	M7200550	HEX NUT M6	1	1	
25	M7081400	LINK GEAR SHIFT ASSY	1	1	

FIG.NO.09



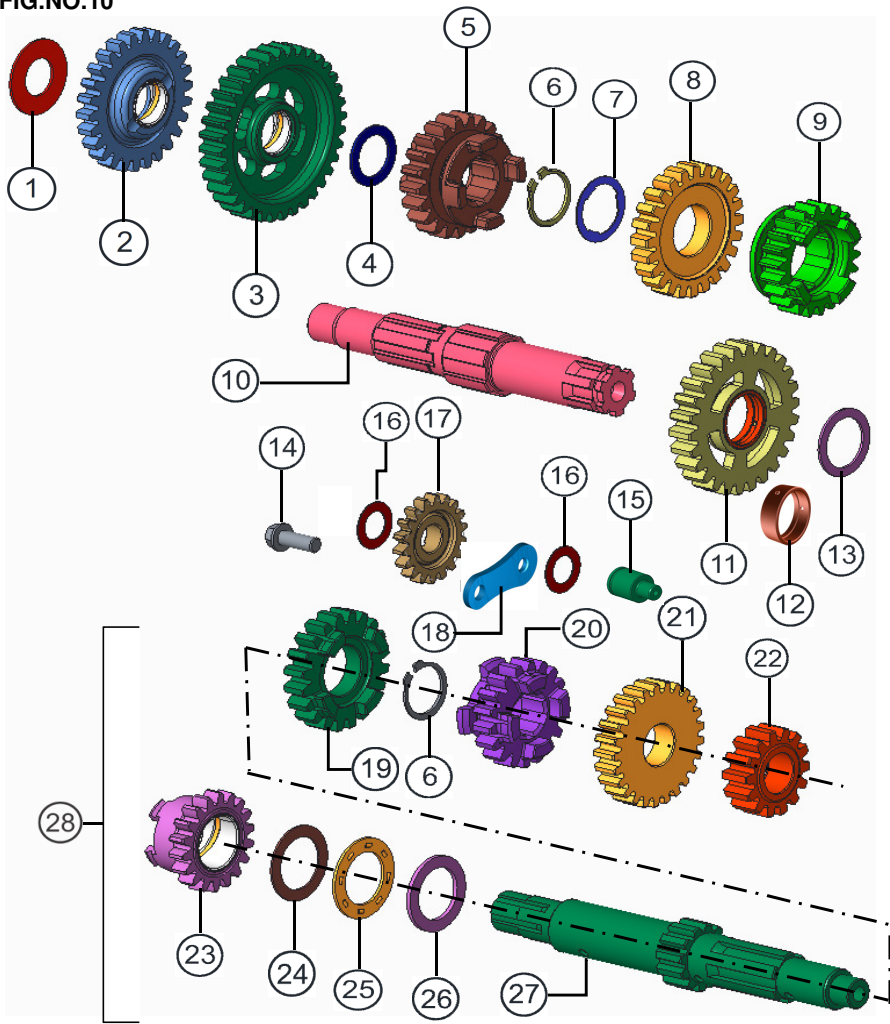
GEAR SHIFT ASSEMBLY

GEAR SHIFT ASSEMBLY

FIG.NO.09

REF NO.	PART NO.	DESCRIPTION	NO. OFF		REMARKS
			APACHE 200		
			DISC	EFI DISC	
26	420462700	HEX SCREW M6X20	1	1	
27	M7081640	LEVER ASSY. GEAR SHIFT	1	1	
28	M7081740	RUBBER GEAR SHIFT LEVER	1	1	
29	G5200280	PUNCHED WASHER 8.5x25x2	1	1	
30	N9200230	SBHC SCREW M8x30	1	1	
31	M7081650	GEAR SHIFT LINKAGE ASSY. - RTR	1	1	
32	R1080500	ROLLER GEARSHIFT CAM	3	3	

FIG.NO.10



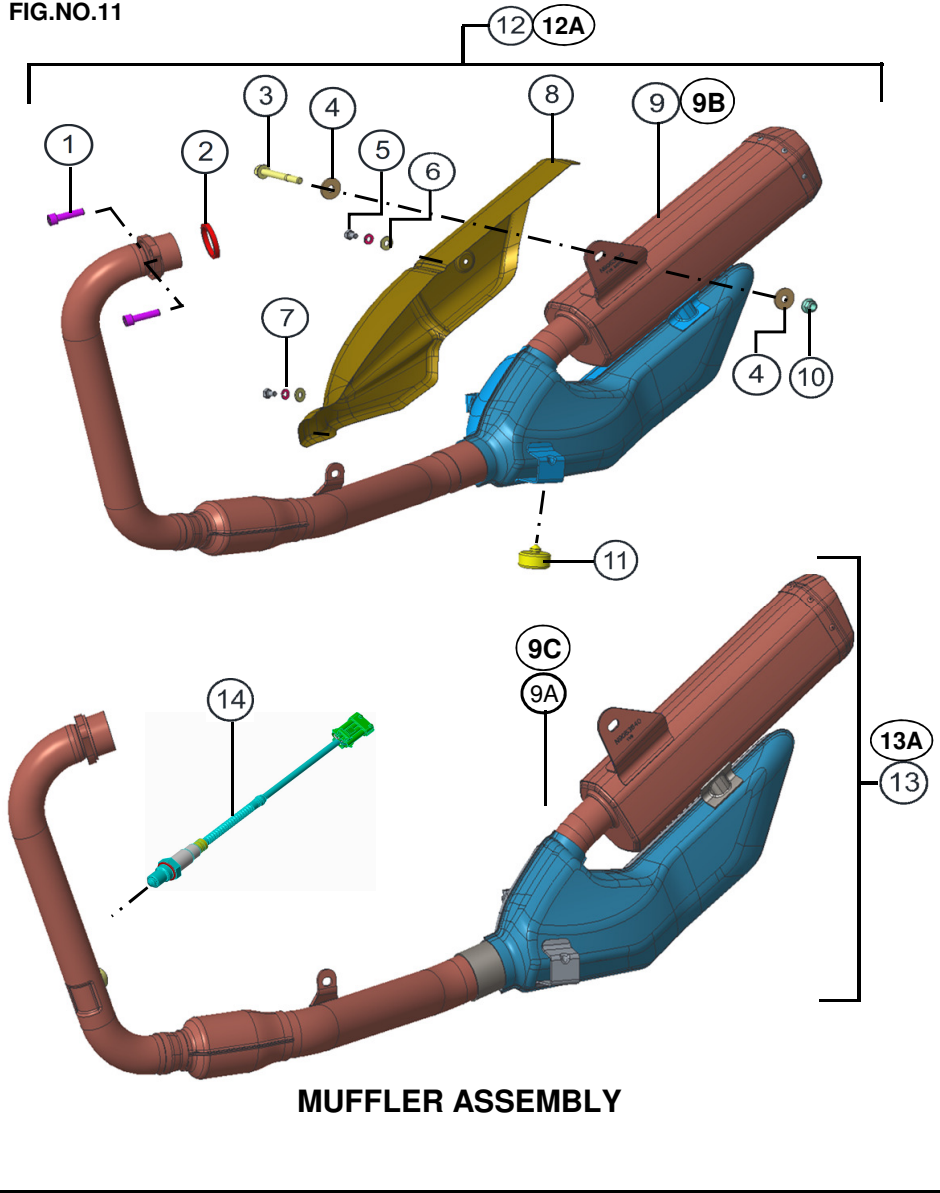
GEAR SET ASSEMBLY

GEAR SET ASSEMBLY

FIG.NO.10

REF NO.	PART NO.	DESCRIPTION	NO. OFF		REMARKS
			APACHE 200		
			DISC	EFI DISC	
1	M7200320	THRUST WASHER	1	1	
2	M7080400	GEAR COMP KS IDLE APACHE	1	1	
3	R1080800	GEAR COMP 1ST DRIVEN N 27	1	1	
4	M7200420	SHIM	1	1	
5	R1081130	GEAR 4TH DRIVEN - 6 LUGS	1	1	
6	0330174	CIRCLIP 20x1.2 N 2ND DRIVE GR	2	2	
7	M7080860	SHIM	1	1	
8	M7080280	GEAR 3RD DRIVEN	1	1	
9	M7080320	GEAR 5TH DRIVEN	1	1	
10	M7081300	SHAFT COMP DRIVE	1	1	
11	M7080890	GEAR 2nd DRIVEN	1	1	
12	N5080060	STAR BUSH	1	1	
13	M7200040	THRUST WASHER	1	1	
14	M7200720	HEX FL. BOLT M6x16	1	1	
15	N9081670	SHAFT IDLE	1	1	
16	P080610	SHIM 11.2x18.5x0.5 OILED	2	2	
17	N9081660	GEAR IDLER	1	1	
18	N9081720	BRKT IDLER GEAR	1	1	
19	R1081120	GEAR 4TH DRIVE - 6 LUGS	1	1	
20	M7080339	GEAR 3RD DRIVE	1	1	
21	M7080299	GEAR 5th DRIVE	1	1	
22	M7080269	GEAR 2ND DRIVE	1	1	
23	M7080370	GEAR COMP KS DRIVEN APACHE	1	1	
24	M7200460	THRUST WASHER	1	1	
25	C8080260	BEARING KICK STARTER DRIVEN GEAR	1	1	
26	M7200430	SHIM	1	1	
27	M7080439	SHAFT COMP COUNTER	1	1	
28	M7080460	SHAFT COMP. COUNTER ASSY.	1	1	

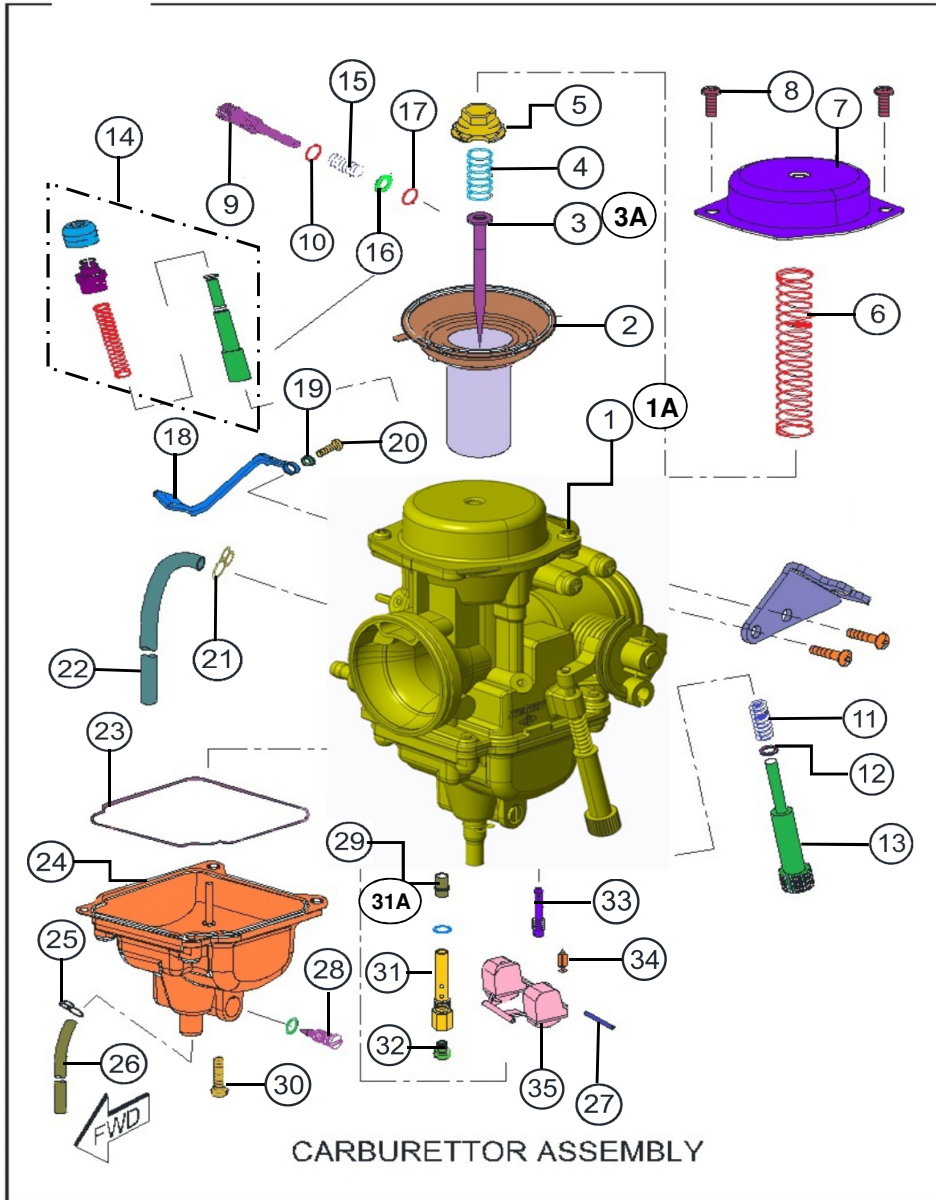
FIG.NO.11



MUFFLER ASSEMBLY

FIG.NO.11

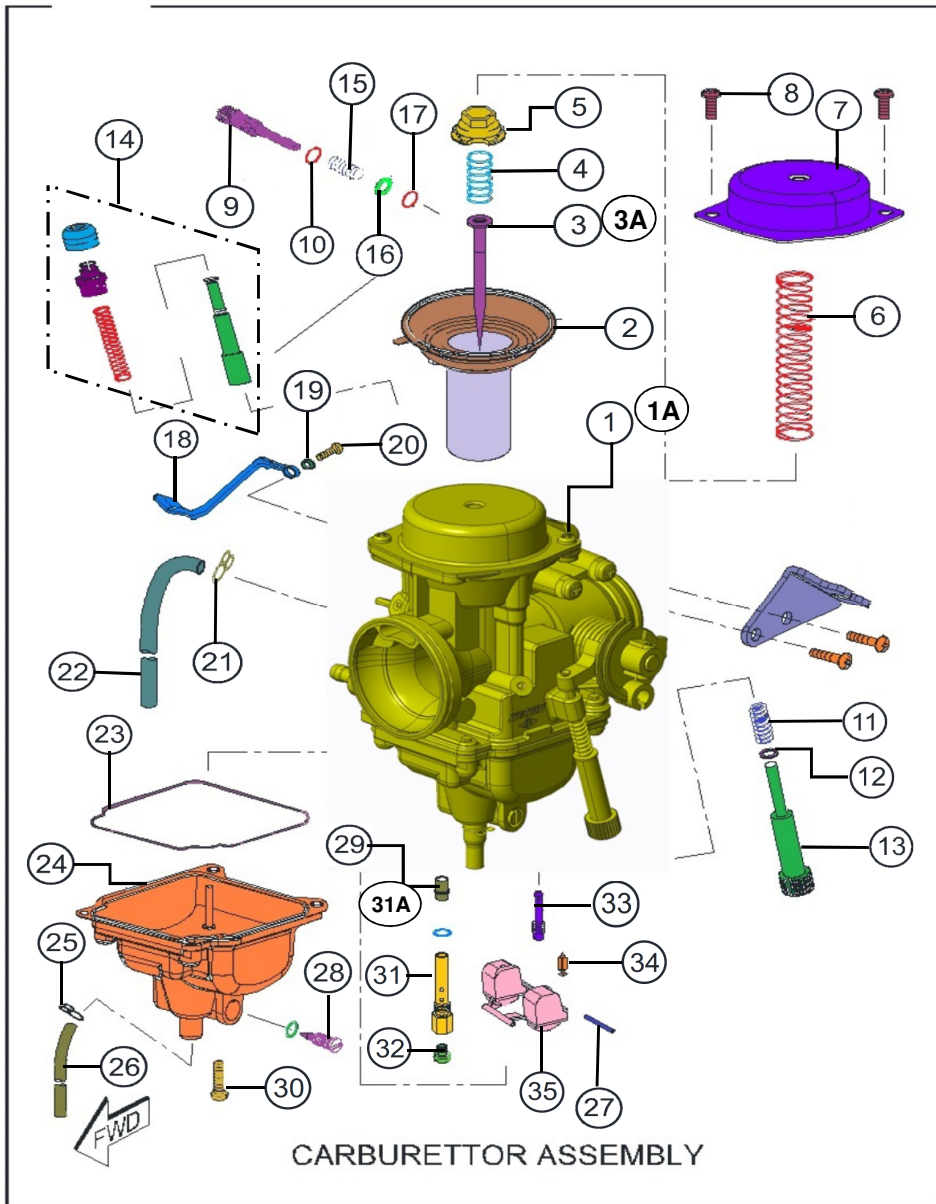
REF NO.	PART NO.	DESCRIPTION	NO. OFF		REMARKS
			APACHE 200		
			DISC	EFI DISC	
1	N5200180	HEX SOC HD CAP SCREW M8x30	2	2	
2	N9053170	GASKET MUFFLER	1	1	
3	N8200150	HEX BOLT M8x60	1	1	
4	N3200210	PUNCHED WASHER 8.2x25.0x2	2	2	
5	0331688	HEX SCREW M6X8	2	2	
6	0330408	WAVE SPRING WASHER M6	2	2	
7	0335608	PUNCHED WASHER 6.5x16.0x1.2	2	2	
8	N9053570	GUARD EXHAUST REAR	1	1	
9	N9053510	MUFFLER COMP	1		
9A	N9053640	MUFFLER COMP EFI		1	EFI
9B	N9053910	MUFFLER COMP	1		BSIV
9C	N9053770	MUFFLER COMP EFI		1	BSIV
10	M1200890	U NUT M8x1.2	1	1	
11	K130190	STOPPER SEAT	1	1	
12	N9053500	MUFFLER SUB ASSY.	1		
12A	N9053920	MUFFLER SUB ASSY.	1		BSIV
13	N9053630	MUFFLER SUB ASSY. EFI(WITH OXY SENS)		1	EFI
13A	N9053760	MUFFLER SUB ASSY. EFI(WITH OXY SENS)		1	BSIV
14	N9060860	OXYGEN SENSOR		1	EFI



CARBURETTOR ASSEMBLY

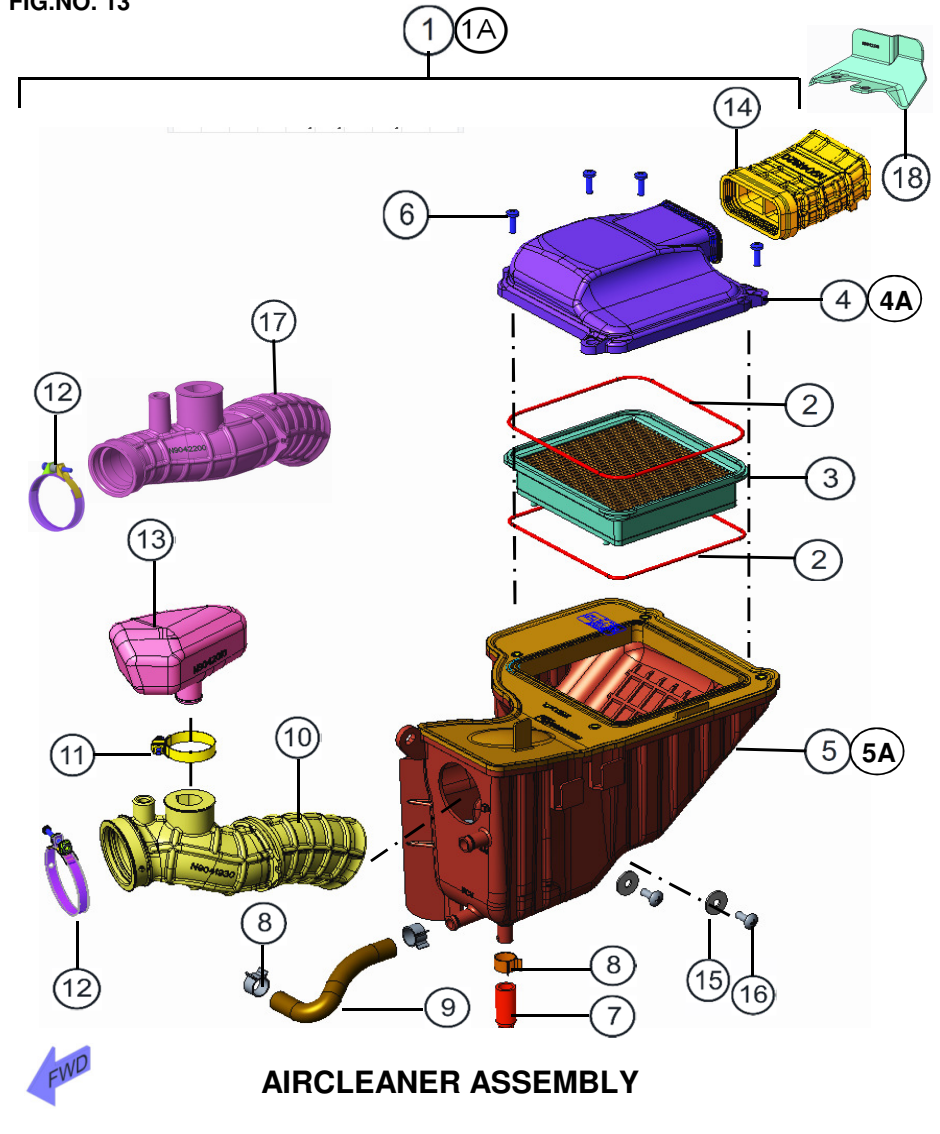
FIG.NO.12

REF NO.	PART NO.	DESCRIPTION	NO. OFF		REMARKS
			APACHE 200		
			DISC	EFI DISC	
1	N9041980	CARBURETTOR ASSY.	1		
1A	N9042430	CARBURETTOR ASSY.	1		BSIV
2	N9324980	PISTON VALVE	1		
3	N9324970	NEEDLE JET 1	1		
3A	N9325950	NEEDLE JET 1	1		BSIV
4	N9325140	SPRING JET NEEDLE	1		
5	N9324990	RETAINER DISC	1		
6	N9325010	SPRING PISTON VALVE	1		
7	N9324900	DIAPHRAGM COVER	1		
8	N9324880	SCREW 1-AIR SCREW	2		
9	N9324870	ADJUSTER PILOT SCREW	1		
10	N9325100	O RING DRAIN	2		
11	N9325000	SPRING IDLE ADJ. SCREW	1		
12	N9325160	WASHER THROTTLE STOP	1		
13	N9325070	IDLE ADJUTER SCREW 1	1		
14	N9324890	CHOKE VALVE	1		
15	N9325090	SPRING	1		
16	N9325150	WASHER PILOT SCREW	1		
17	N9325030	O RING STARTER	1		
18	N9325180	CHOKE LEVER	1		
19	N9325800	COLLAR STARTER LEVER	1		
20	N9325810	SCREW CHOKE LEVER	1		
21	N9325130	CLIP TUBE	2		
22	N9325120	HOSE AIR VT	1		
23	N9324940	GASKET FLOAT BODY	1		
24	N9325750	FLOAT BODY ASSY.	1		
25	N9325170	CLIP TUBE	1		
26	N9325110	DRAIN HOSE 1	1		



		CARBURETTOR ASSEMBLY		FIG.NO.12	
REF NO.	PART NO.	DESCRIPTION	NO. OFF		REMARKS
			APACHE 200		
			DISC	EFI DISC	
27	N9325080	PIN FLOAT	1		
28	N9325040	SCREW DRAIN	1		
29	N9325060	NEEDLE JET	1		
30	N9325020	SCREW FLOAT CHAMBER	4		
31	N9324950	HOLDER JET NEEDLE	1		
31A	N9325960	HOLDER JET NEEDLE	1		BSIV
32	N9325050	MAIN JET KEIHIN	1		
33	N9324960	PILOT JET KEIHIN	1		
34	N9324920	FLOAT NEEDLE	1		
35	N9324910	FLOAT	1		

FIG.NO. 13

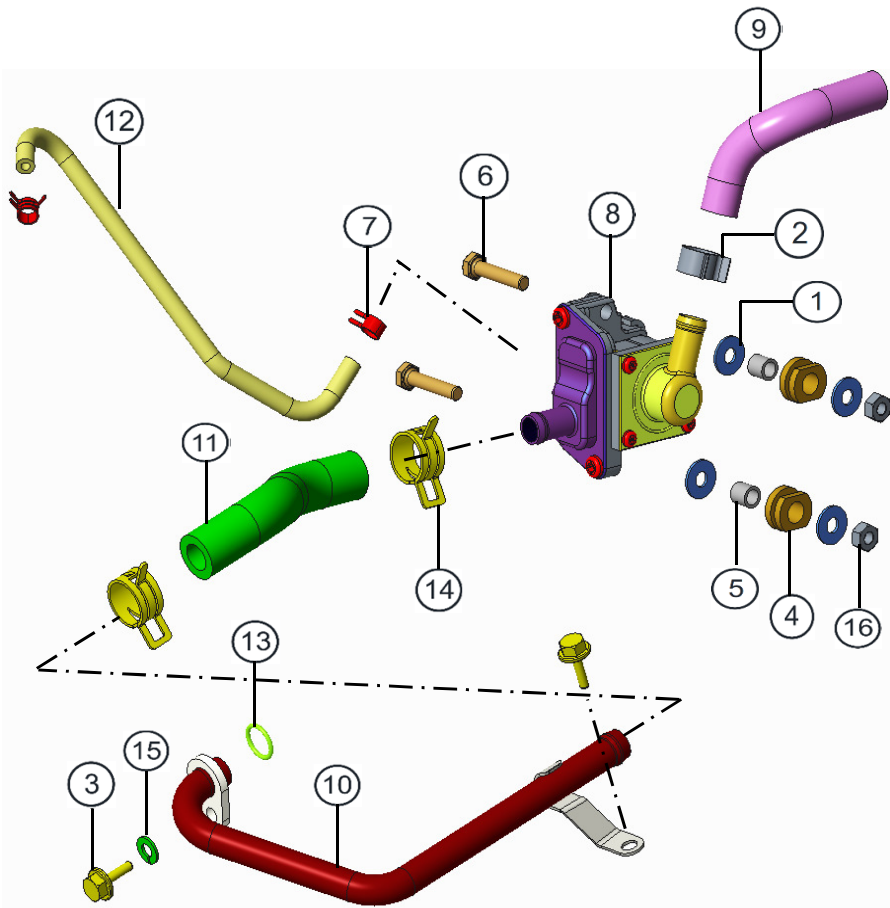


AIRCLEANER ASSEMBLY

FIG.NO. 13

REF NO.	PART NO.	DESCRIPTION	NO. OFF		REMARKS
			APACHE 200		
			DISC	EFI DISC	
1	N9041880	AIR CLEANER ASSY.	1		
1A	N9042180	AIR CLEANER ASSY. EFI		1	EFI
2	N9042000	SEAL AIR CLEANER	2	2	
3	N9041910	FILTER HOLDER COMP.	1	1	
4	N9041940	TOP COVER FILTER	1	1	
4A	N9041900	TOP COVER FILTER	1	1	
5	N9325770	CASE COMP. AIRCLEANER	1	1	
5A	N9041890	CASE COMP. AIRCLEANER	1	1	
6	M1200660	CRPH SCR M5x16	4	4	
7	G4040330	DRAIN PIPE	1	1	
8	K140820	HOSE CLIP NP.054	3	3	
9	N9042140	HOSE BREATHER PCV	1	1	
10	N9041930	HOSE BREATHER PCV	1	1	
11	S1200920	HOSE CLIP (TSDS-0423)	1	1	
12	G4041100	CLAMP TUBE OUTLET	1	1	
13	N9042010	RESONATOR INTAKE	1	1	
14	N9041920	TUBE INLET	1	1	
15	0335608	PUNCHED WASHER 6.5x16.0x1.2	2	2	
16	0332275	SCREW - CRPH M6x16 6.8	2	2	
17	N9042200	TUBE OUTLET		1	EFI
18	N9042370	SHROUND INLET	1	1	BSIV

FIG.NO. 14



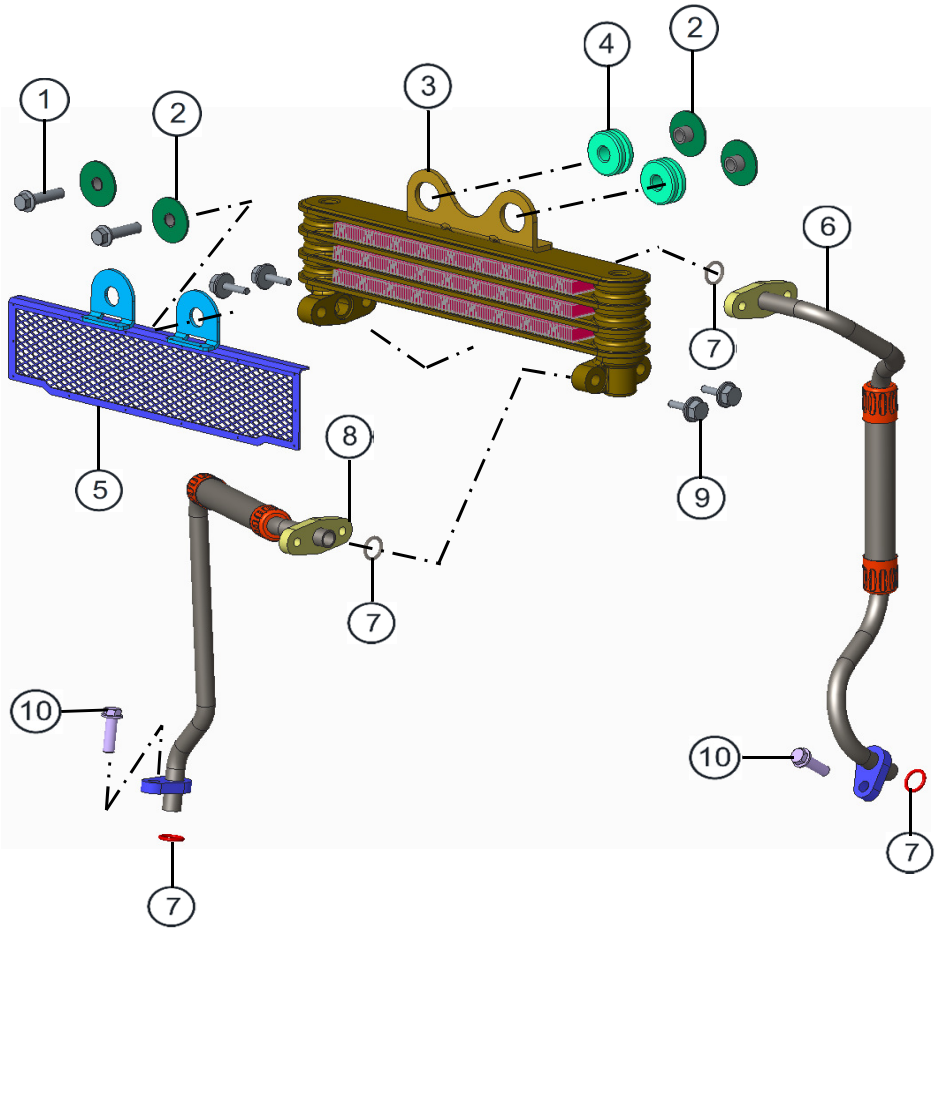
SEC AIR INJECTION VALVE ASSY.

SEC AIR INJECTION VALVE ASSY.

FIG.NO. 14

REF NO.	PART NO.	DESCRIPTION	NO. OFF		REMARKS
			APACHE 200		
			DISC	EFI DISC	
1	0335608	PUNCHED WASHER 6.5x16.0x1.2 ZNB	4	NA	
2	K140820	HOSE CLIP	2	"	
3	M1200520	HEX FL BOLT M6x16	2	"	
4	N2041670	CUSHION VALVE MOUNTING	2	"	
5	N3160220	SPACER R.C.LAMP MOUNTING	2	"	
6	N3200190	HEX SCREW M6x30	2	"	
7	N8040370	HOSE CLIP VACUUM	2	"	
8	N9042020	SEC AIR INJECTION VALVE	1	"	
9	N9042030	HOSE SAI INLET	1	"	
10	N9042040	PIPE COMP SAI	1	"	
11	N9042120	HOSE AIR OUTLET	1	"	
12	N9042130	HOSE AIR CUT VALVE	1	"	
13	N9042150	O-RING AIR INJECTION	1	"	
14	N9042160	HOSE CLIP 190 120	2	"	
15	P1200050	WAVE SPRING WASHER 6.5	1	"	
16	P1200060	HEX NUT M6 ZNG (TSDS-0304)	2	"	

FIG.NO. 15



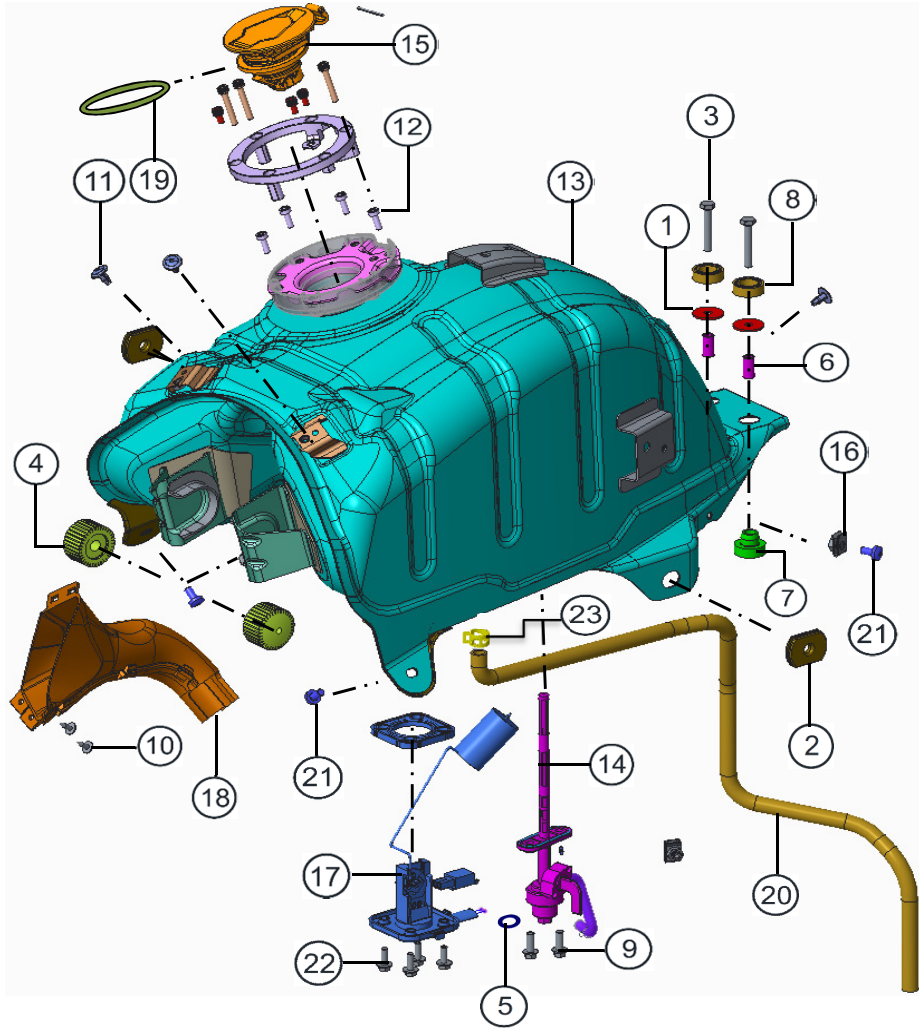
OIL COOLING ASSEMBLY

OIL COOLING ASSEMBLY

FIG.NO. 15

REF NO.	PART NO.	DESCRIPTION	NO. OFF		REMARKS
			APACHE 200		
			DISC	EFI DISC	
1	N2200500	HEX FLANGE BOLT M6x25 ZNG	2	2	
2	R1140460	CUP WASHER M6	4	4	
3	N9180610	OIL COOLER ASSY.	1	1	
4	R2010830	GROMMET	2	2	
5	N9180620	GUARD OIL COOLER	1	1	
6	N9180600	PIPE COMP INLET	1	1	
7	N8040340	O-RING AIR INJECTION	4	4	
8	N9180640	PIPE COMP OUTLET	1	1	
9	M1200520	HEX FL BOLT M6x16	4	4	
10	M1200530	HEX FLANGE BOLT M6x20	2	2	

FIG.NO. 16



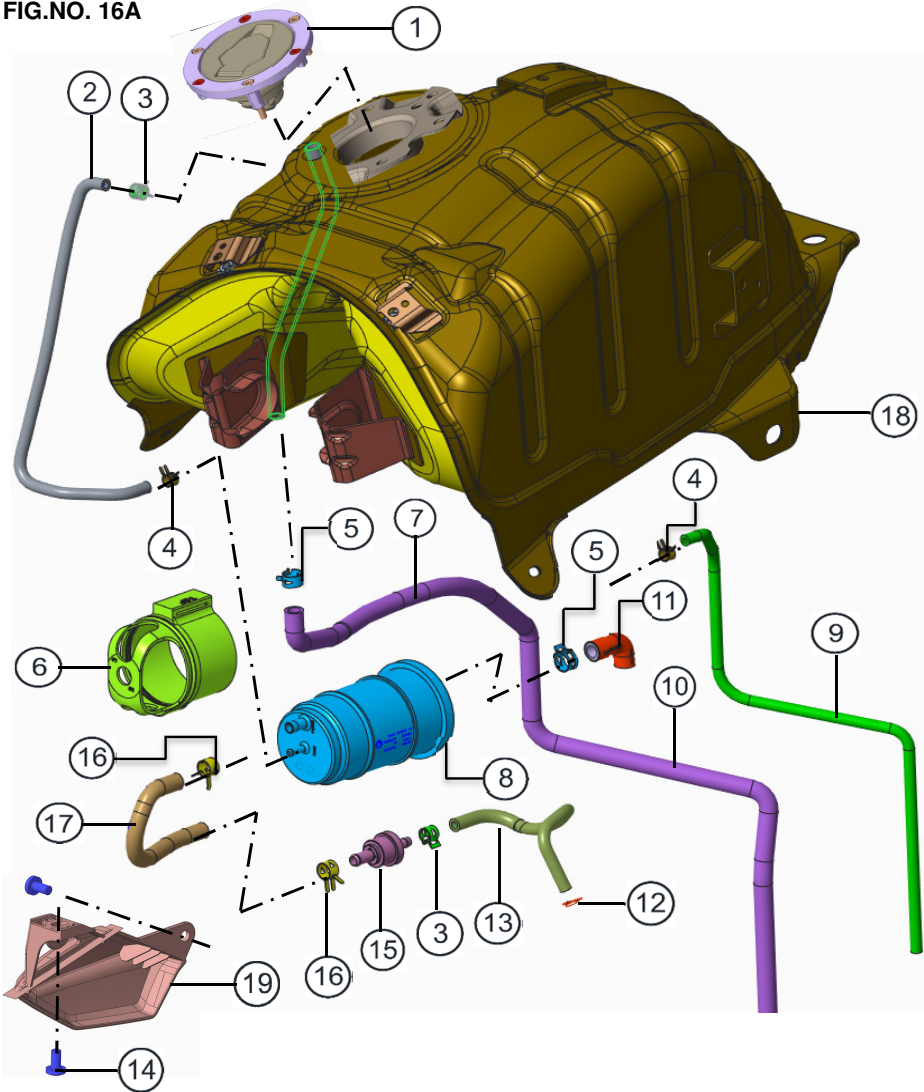
FUEL TANK ASSEMBLY

FUEL TANK ASSEMBLY

FIG.NO. 16

REF NO.	PART NO.	DESCRIPTION	NO. OFF		REMARKS
			APACHE 200		
			DISC	EFI DISC	
1	0335876	PUNCHED WASHER 6.5x24.0x1.6 ZNC	2	2	
2	K122810	CUSHION COVER FRAME	2	2	
3	K200540	HEX SCREW M6X38 8.8	2	2	
4	N2140060	CUSHION FUEL TANK FRONT	2	2	
5	N3140120	GASKET OIL LEVEL PLUG	2		
6	N3140150	SPACER FUEL TANK REAR	2	2	
7	N3140160	CUSHION FUEL TANK REAR UPPER	2	2	
8	N3140170	CUSHION FUEL TANK REAR LOWER	2	2	
9	N3200220	HEX FL BOLT M6x16	2		
10	N3200340	CRR FL. PAN HD TAP SCREW ST4.2x13	2	2	
11	N7201300	SNAP RIVET PLASTIC	3	3	
12	N7202040	HEX SOCKET CAP SCREW M5 14	4	4	
13	N9141270	FUEL TANK COMP.	1		
14	N9141280	FUEL COCK ASSY.	1		
15	N9141340	CAP FUEL TANK	1	1	
16	S1200700	RETAINER CLIP COMP. PANEL	2	2	
17	N9162200	FUEL SENDER ASSY	1		
18	N9180790	DEFLECTOR	1	1	
19	N9200550	O-RING 5700 360	1	1	
20	N3140520	DRAIN HOSE	1	1	
21	P3200010	CRPH SCR M6x12 6.8	4	4	
22	R1200380	HEX FLANGE BOLT M5X14	4		
23	R2040400	HOSE CLIP NP.054	1	1	

FIG.NO. 16A



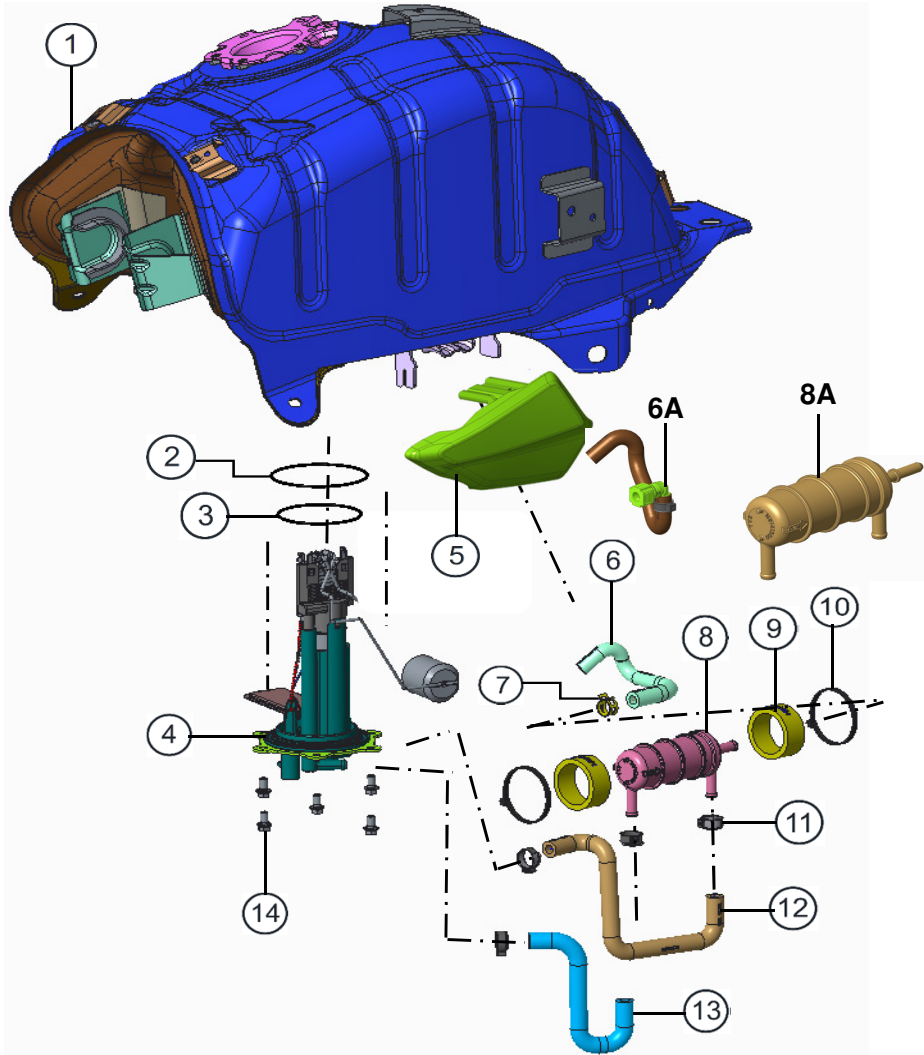
FUELTANK ASSEMBLY - BSIV

FUELTANK ASSEMBLY - BSIV

FIG.NO. 16A

REF NO.	PART NO.	DESCRIPTION	NO. OFF		REMARKS
			APACHE 200		
			DISC	EFI DISC	
1	N9142250	CAP ASSY. FUEL TANK	1		BSIV
2	N9141440	HOSE TANK TO CANISTER	1		BSIV
3	N4200130	HOSE CLAMP	2		BSIV
4	N8040370	HOSE CLIP VACCAM	2		BSIV
5	R2040400	HOSE CLIP NP 54	2		BSIV
6	N9142240	BOOT CANISTER	1		BSIV
7	N3140520	DRAIN HOSE	1		BSIV
8	N9141430	CANISTER COMP	1		BSIV
9	N9142220	HOSE DRAIN CANISTER	1		BSIV
10	N3140520	DRAIN HOSE	1		BSIV
11	N9141650	HOSE AIR INLET	1		BSIV
12	414147000	HOSE CLIP	1		BSIV
13	N9141620	HOSE CARBURETTOR	1		BSIV
14	P3200010	CRPH SCREW M6x12	2		BSIV
15	N9141630	PURGE VALVE	1		BSIV
16	R1040460	CLAMP BREATHER HOSE	2		BSIV
17	N9141610	HOSE PURGE VALVE	1		BSIV
18	N91422700D	FUEL TANK COMP. BLACK	1		BSIV
19	N9229850	COVER CANISTER SYSTEM	1		BSIV

FIG.NO. 16B



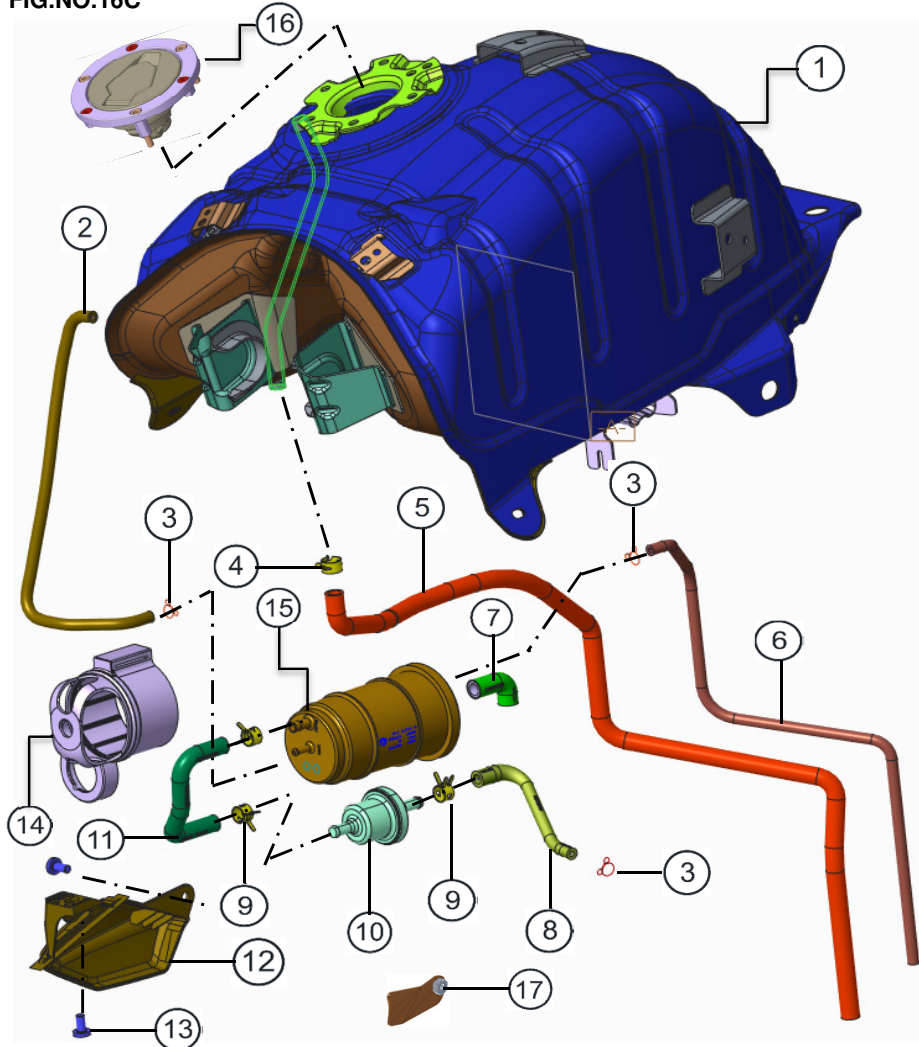
FUEL TANK ASSEMBLY - EFI

FUEL TANK ASSEMBLY - EFI

FIG.NO.16B

REF NO.	PART NO.	DESCRIPTION	NO. OFF		REMARKS
			APACHE 200		
			DISC	EFI DISC	
1	N9141660	FUEL TANK COMP EFI		1	EFI
2	N7201540	O-RING 7500 260		1	"
3	N7201530	O-RING 6500 260		1	"
4	N9141290	FUEL PUMP MODULE		1	"
5	N9228600	COVER FUEL FILTER EFI		1	"
6	N9141410	HOSE INJECTOR		1	"
6A	N9142150	HOSE INJECTOR		1	BSIV
7	R2040400	HOSE CLIP NP.054		2	"
8	N9141300	FUEL FILTER ASSY.		1	"
8A	N9142140	FUEL FILETER ASSY.		1	BSIV
9	N7140240	BOOT FUEL FILTER MTG		2	"
10	N7201470	CABLE STRAP		2	"
11	NB140110	HOSE CLAMP 120		2	"
12	N9141370	HOSE FILTER OUTLET		1	"
13	N9141360	HOSE PUMP OUTLET		1	"
14	N8200060	HEX FLANGE BOLT M6x10		6	"

FIG.NO.16C



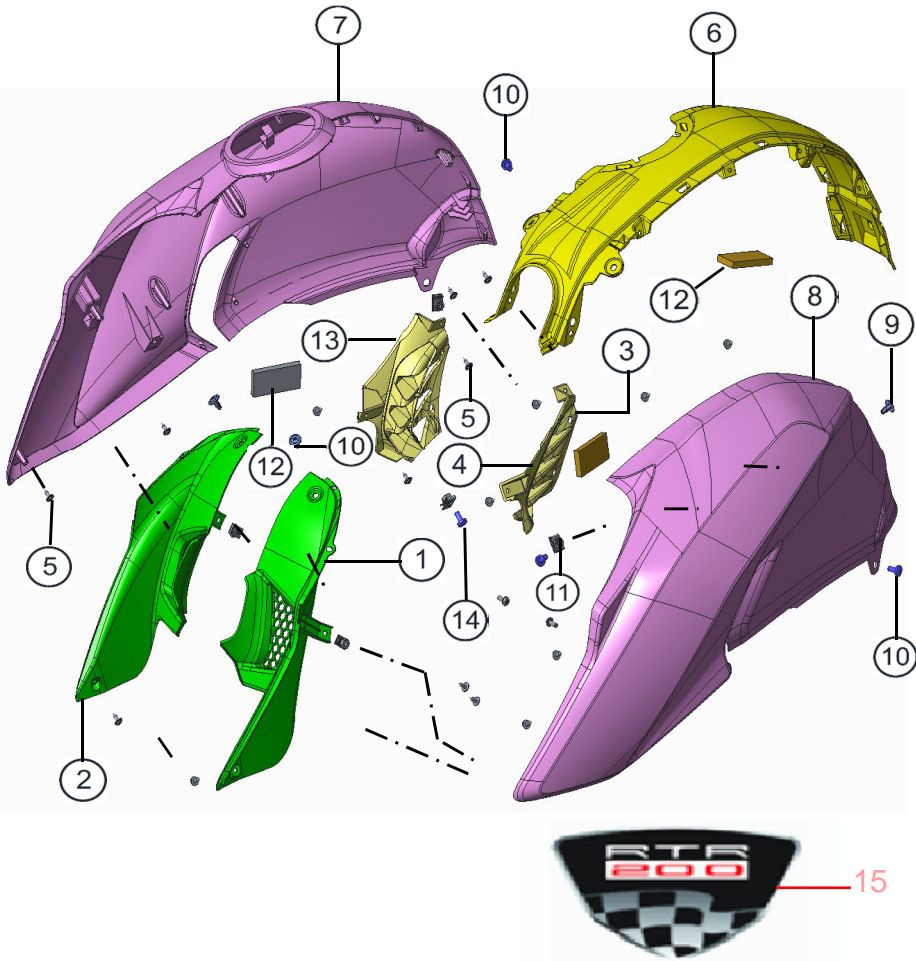
FUEL TANK ASSEMBLY - EFI - BSIV

FUEL TANK ASSEMBLY - EFI - BSIV

FIG.NO.16C

REF NO.	PART NO.	DESCRIPTION	NO. OFF		REMARKS
			APACHE 200		
			DISC	EFI DISC	
1	N91423100D	FUEL TANK COMP.		1	BSIV
2	N9141440	HOSE TANK TO CANISTER		1	BSIV
3	414147000	HOSE CLIP		4	BSIV
4	R2040400	HOSE CLIP NP 54		2	BSIV
5	N3140520	DRAIN HOSE		1	BSIV
6	N9142220	HOSE DRAIN CANISTER		1	BSIV
7	N9141650	HOSE AIR INLET		1	BSIV
8	N9142060	HOSE PURGE VALVE TO AIR BOX		1	BSIV
9	R2040460	HOSE CLIP NP 54		3	BSIV
10	N7060210	PURGE VALVE		1	BSIV
11	N9141450	HOSE PURGE VALVE		1	BSIV
12	N9229850	COVER CANISTER SYSTEM		1	BSIV
13	P3200010	CRPH SCREW M6x12		2	BSIV
14	N9142050	BOOT CANISTER COMP.		1	BSIV
15	N9141430	CANISTER COMP		1	BSIV
16	N9142250	CAP ASSY. FUEL TANK		1	BSIV
17	N9229860	BRKT COVER MOUNTING		1	BSIV

FIG.NO. 17



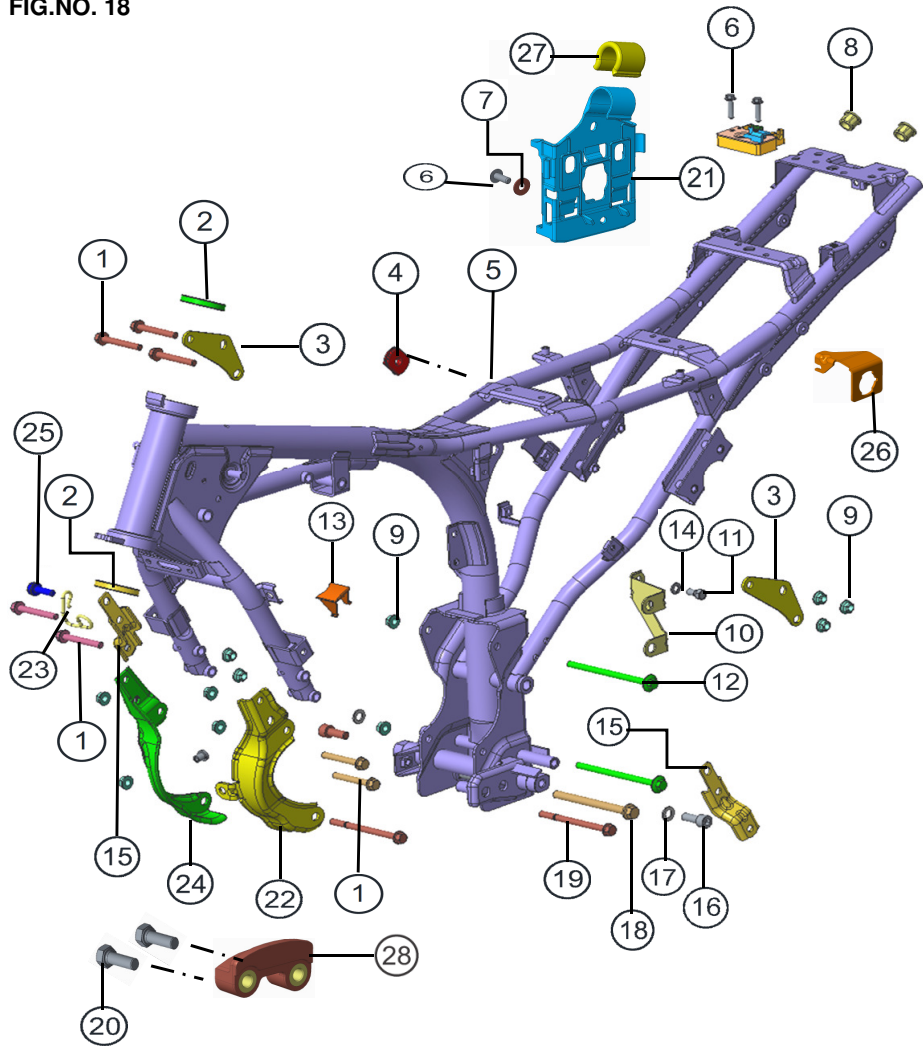
COVER FUEL TANK ASSEMBLY

COVER FUEL TANK ASSEMBLY

FIG.NO. 17

REF NO.	PART NO.	DESCRIPTION	NO. OFF		REMARKS
			APACHE 200		
			DISC	EFI DISC	
1	N9226110	COVER FUEL TANK INNER LH	1	1	
2	N9226120	COVER FUEL TANK INNER R	1	1	
3	N9226900	GRILL COVER FRAME LH	1	1	
4	N9226910	GRILL COVER FRAME RH	1	1	
5	N3200340	CRR FLANGED PAN HD TAP SCREW ST4.2	15	15	
6	N92262605D	COVER FUEL TANK TOP	1	1	MAT. BLACK
7	---	COVER FUEL TANK OUTER RH	1	1	REF. COLOUR
8	---	COVER FUEL TANK OUTER LH	1	1	"
9	N7201300	SNAP RIVET PLASTIC	2	2	
10	P3200010	CRPH SCREW M6x12 6.8 ZNK	4	4	
11	K3200830	RETAINER CLIP COMP. PANEL	2	2	
12	N9227820	CUSHION FRONT TOP	3	3	
13	0331708	CRR PAN HD SCREW M5x12	2	2	
14	N9228750	LOGO COVER COVER FUEL TOP	1	1	N.I
15	N9228750	LOGO COVER FUEL TANK TOP	1	1	

FIG.NO. 18



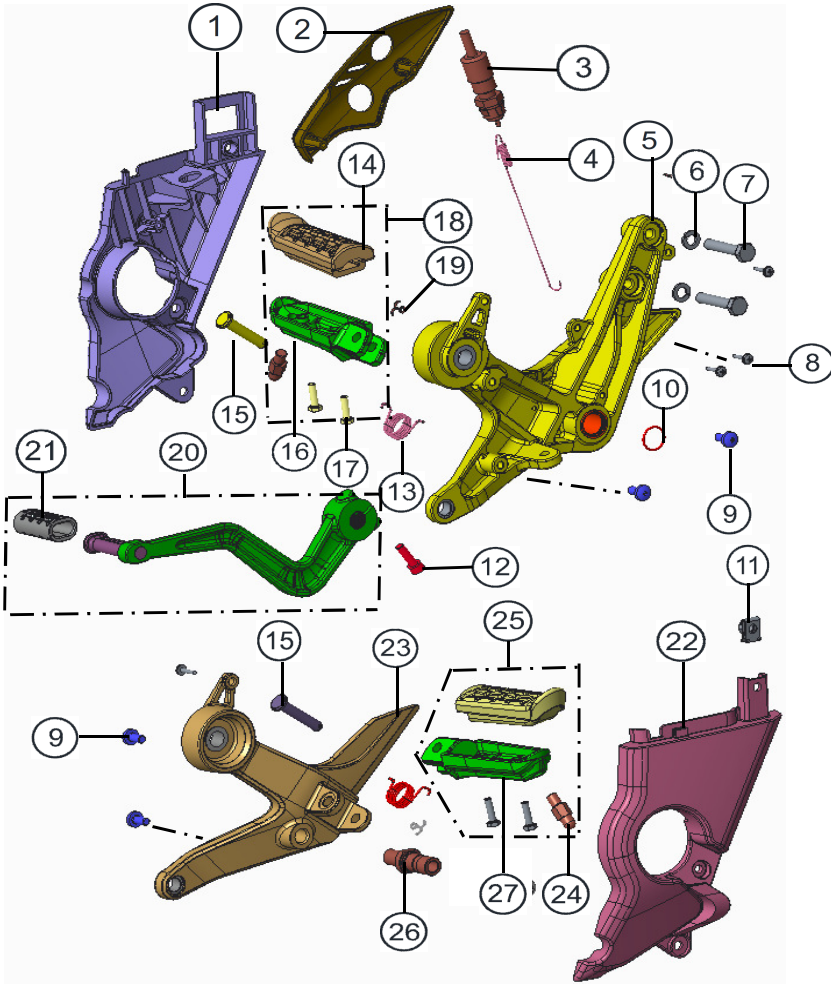
FRAME ASSEMBLY

FRAME ASSEMBLY

FIG.NO. 18

REF NO.	PART NO.	DESCRIPTION	NO. OFF		REMARKS
			APACHE 200		
			DISC	EFI DISC	
1	M7200070	HEX FL BOLT M8x55	4	7	
2	N9101470	CUP BOTTOM	2	2	
3	N9127660	BRKT ENGINE MTG TOP COMP		2	
4	K122810	CUSHION COVER FRAME	1	1	
5	N9124920	FRAME COMP	1	1	
6	42047600	SCREW CRPH M6x16		1	EFI
7	0335608	PUNCHED WASHER 6.5x16.0x1.2		1	"
8	N3120410	PLUG TUBE UPPER	2	2	
9	M1200890	U NUT M8x1.2	10	10	
10	N9127360	BRKT SEC AIR INJECTION	1	1	
11	0331058	HEX SCREW M8x16 + SPRING WASHER	1	1	
12	M1200120	HEX FLANGE BOLT M8x120	2	2	
13	N9123750	COVER BRACKET CRASHGUARD	2	2	
14	G5200490	PUNCHED WASHER 8.5x16x1.2	1	1	
15	N9127420	BRKT CRASH GUARD MTG	2	2	
16	N9200250	HEX SOC HD CAP M10X25	2	2	
17	0335528	PUNCHED WASHER 10.5x18x1.6	2	2	
18	N5200330	HEX FL BOLT M8x100	1	1	
19	N8200050	BOLT CENTER STAND	1	1	
20	N2200500	HEX FLANGE BOLT	2	2	
21	N9127690	HOLDER CONTROLLER	1	1	
22	N9127380	BRKT ENGINE MTG COMP LH	1	1	
23	N9127670	CABLE GUIDE	1	1	
24	N9127390	BRKT ENGINE MTG COMP RH	1	1	
25	M1200480	HEX FLANGE BOLT M8x25	1	1	
26	N9127640	BRKT SEAT LOCK	1	1	
27	N9127740	SLEEVE		1	EFI
28	N9127850	CHAIN GUIDE BOTTOM	1	1	"

FIG.NO. 19



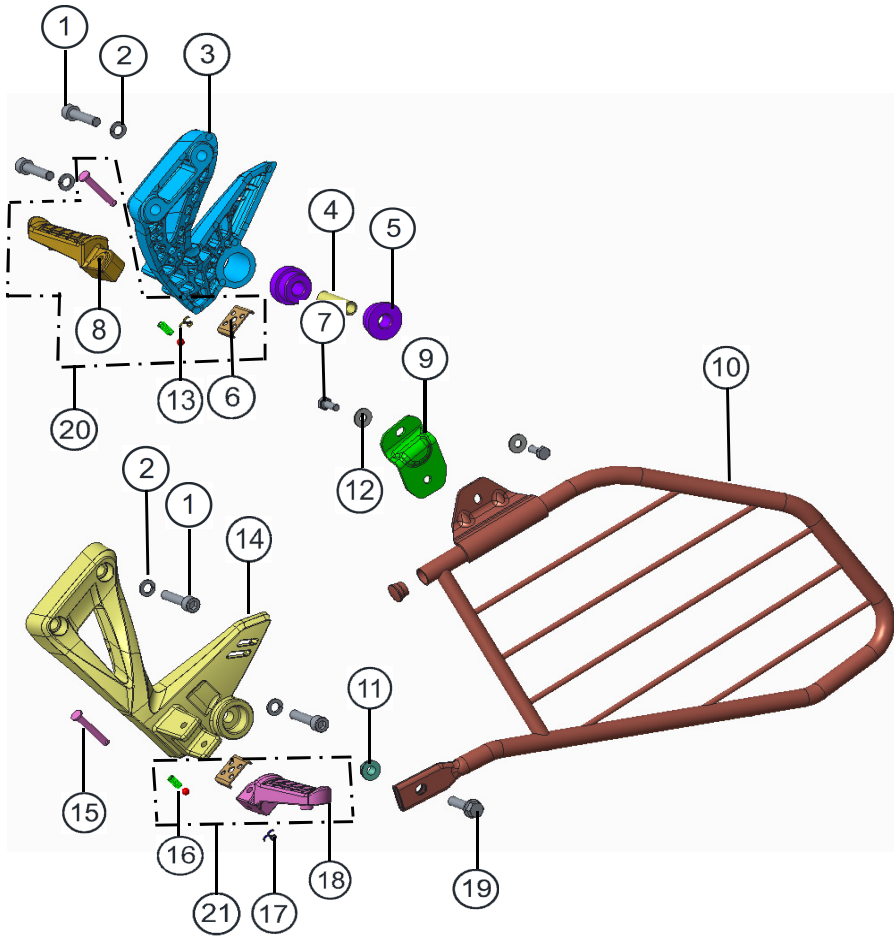
RIDER FOOTREST ASSEMBLY LH & RH

RIDER FOOTREST ASSEMBLY LH & RH

FIG.NO. 19

REF NO.	PART NO.	DESCRIPTION	NO. OFF		REMARKS
			APACHE 200		
			DISC	EFI DISC	
1	N9223080	COVER FRAME BOTTOM RH (APACHE REF)	1	1	
2	N9127770	COVER MASTER CYLINDER	1	1	
3	N9160900	SWITCH ASSY STOP LAMP	1	1	
4	N8111110	SPRING STOP LAMP SWITCH	1	1	
5	N9125980	RIDER FOOTREST DISC R(APACHE REF)	1	1	
6	0330318	WAVE SPRING WASHER M8 ZNB	2	2	
7	420955700	HEX SCREW M8X40 8.8 ZNB	2	2	
8	K200320	SCREW SELF TAPPING 4.2x16 ZNK	2	2	
9	P3200010	CRPH SCR M6x12 6.8 ZNK	4	4	
10	N9200300	O RING BRAKE PEDAL	1	1	
11	S1200700	RETAINER CLIP COMP. PANEL	1	1	
12	N2200470	HEX SOC HD CAP SCR M6x20 P 12.9	1	1	
13	N9124020	TORSION SPRING FOOTPEG	2	2	
14	N9124050	SLEEVE RIDER FOOTREST	2	2	
15	N9200310	CLEVIS PIN B8X42	2	2	
16	N9123930	RIDER FOOTPEG ASSY LH RTR	1	1	
17	420510700	HEX SCREW M5x16	4	4	
18	N9123920	RIDER FOOTPEG ASSY. RH RTR	1	1	
19	0330048	SPLIT PIN 2.0x20	2	2	
20	N9112010	BRAKE PEDAL ASSY.	1	1	
21	N9112000	SLEEVE PEDAL ASSY.	1	1	
22	N9223070	COVER FRAME BOT LH (APACHE REF)	1	1	
23	N9125920	RIDER FOOTREST L (APACHE REF)	1	1	
24	N9124000	STUD RIDER FOOTREST	2	2	
25	N9123930	RIDER FOOTPEG ASSY LH RTR	1	1	
26	N9125990	PIN GEAR SHIFT LEVER	1	1	
27	N9124030	RIDER FOOTPEG LH	1	1	

FIG.NO. 20



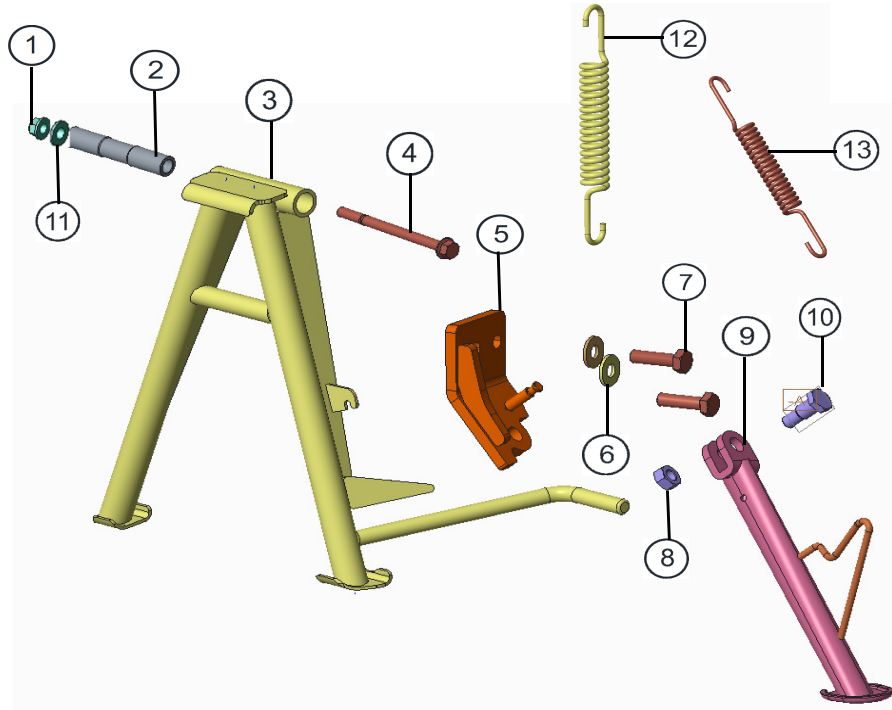
PILLION FOOTREST ASSEMBLY LH & RH

PILLION FOOTREST ASSEMBLY LH & RH

FIG.NO. 20

REF NO.	PART NO.	DESCRIPTION	NO. OFF		REMARKS
			APACHE 200		
			DISC	EFI DISC	
1	N3200180	HEX SOC HD CAP SCR M8x35 ZNG 8.8	4	4	
2	0330318	WAVE SPRING WASHER M8 ZNB	4	4	
3	N9225890	PILLION FOOTREST RH	1	1	
4	N9125590	SPACER	1	1	
5	N9125580	CUSHION EXHAUST MTG	2	2	
6	N9127810	GUIDE PILLION FOOT PEG LH	2	2	
7	420464700	HEX SCREW M6X16 8.8	2	2	
8	N9127800	PILLION FOOTPEG ASSY. RH	1	1	
9	N9228050	BRKT SAREE GUARD MTG	1	1	
10	N9227150	SAREE GUARD COMP	1	1	
11	M1200890	U NUT M8x1.2	1	1	
12	0335608	PUNCHED WASHER 6.5x16.0x1.2	2	2	
13	0339204	BALL LEVER ASSY. KICKSTARTER 7/3	2	2	
14	N9225880	PILLION FOOTREST LH	1	1	
15	N9121790	PIN PILLION FOOTREST	2	2	
16	3030515	SPRING PILLION FOOTREST	2	2	
17	0330048	SPLIT PIN 2.0x20 ZNB	2	2	
18	N9127790	PILLION FOOTPEG ASSY. LH	1	1	
19	M7110280	HEX FLANGED BOLT M8x30	1	1	
20	N9325510	PILLION FOOTPEG ASSY. RH KIT	1	1	
21	N9325500	PILLION FOOTPEG ASSY. LH KIT	1	1	

FIG.NO. 21



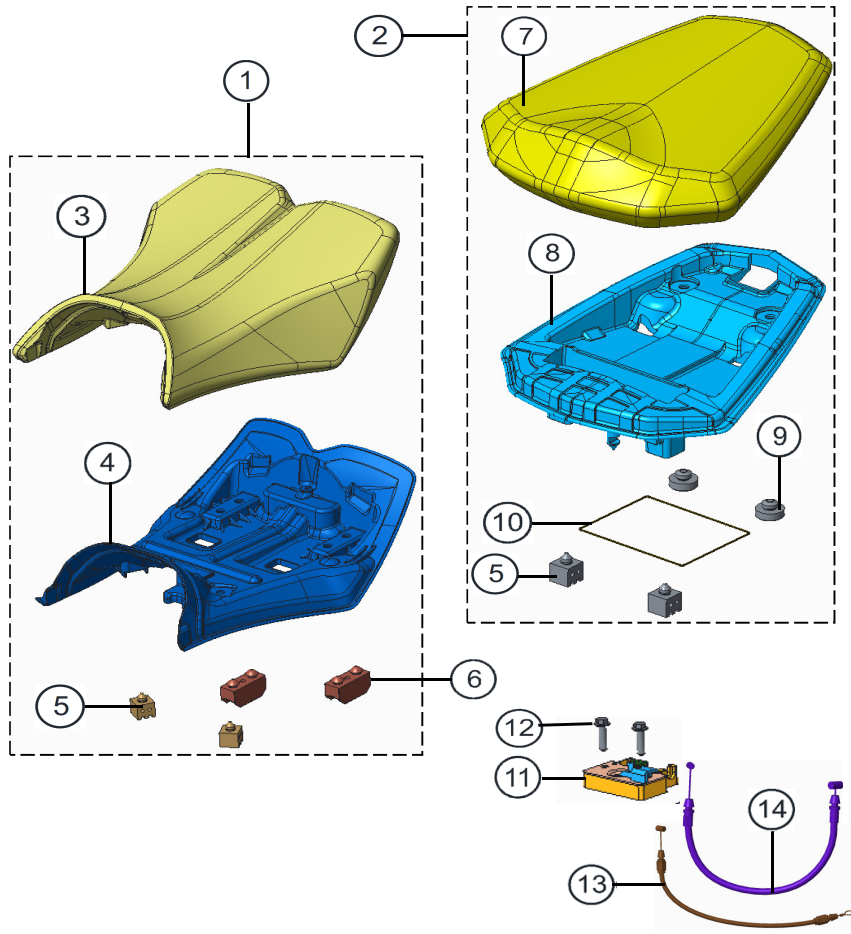
CENTER STAND & PROP STAND ASSY.

CENTER STAND & PROP STAND ASSY.

FIG.NO. 21

REF NO.	PART NO.	DESCRIPTION	NO. OFF		REMARKS
			APACHE 200		
			DISC	EFI DISC	
1	0334038	HEX NUT M10 8	1	1	
2	N3121540	SPACER CENTER STAND	1	1	
3	N9127220	CENTER STAND COMP	1	1	
4	N8200050	BOLT CENTER STAND	1	1	
5	N9127430	BRKT PROP STAND COMP	1	1	
6	0335628	PUNCHED WASHER 10.5x24x2.3	2	2	
7	R1200160	HEX BOLT M10X1.25X40	2	2	
8	K200690	HEX NUT M10 8	1	1	
9	N9127200	PROP STAND COMP	1	1	
10	N9200210	SPL HEX BOLT M10 X 30	1	1	
11	0330328	WAVE SPRING WASHER M10	1	1	
12	N3120860	SPRING CENTER STAND	1	1	
13	N5121610	SPRING PROP STAND	1	1	

FIG.NO. 22



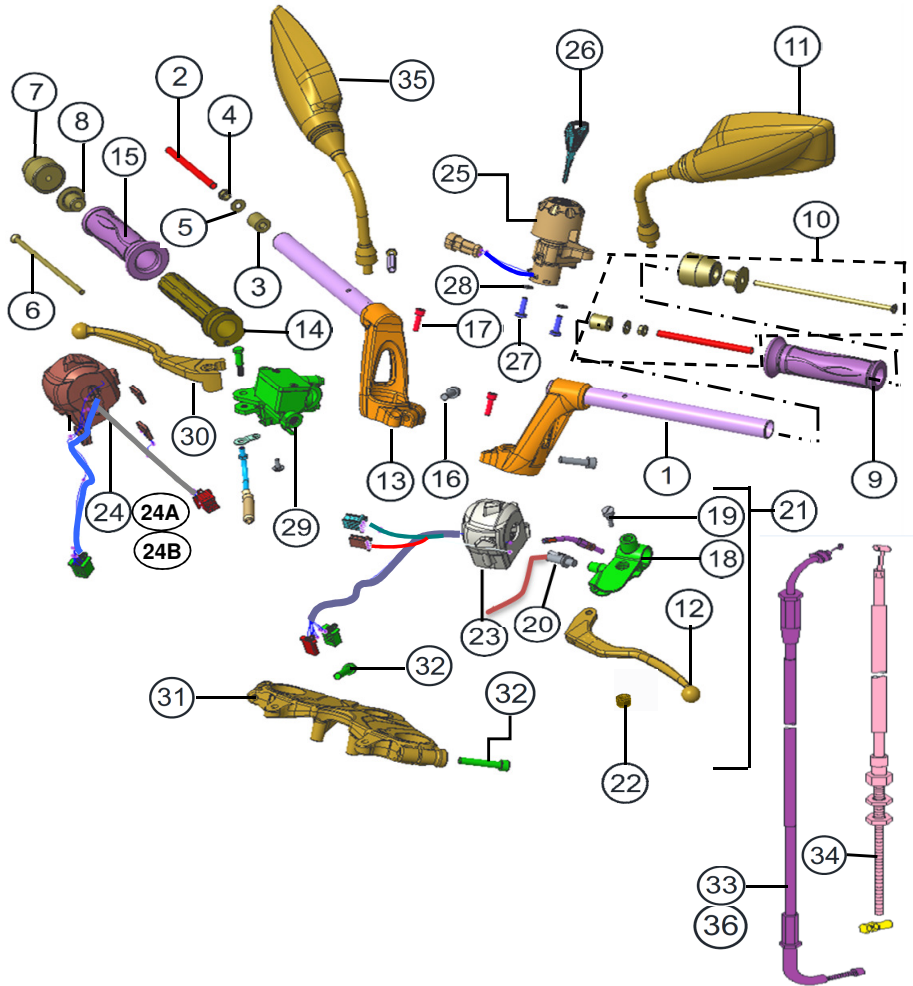
SEAT ASSEMBLY FRONT & REAR

SEAT ASSEMBLY FRONT & REAR

FIG.NO. 22

REF NO.	PART NO.	DESCRIPTION	NO. OFF		REMARKS
			APACHE 200		
			DISC	EFI DISC	
1	N9130210	SEAT ASSY FRONT	1	1	
2	N9130220	SEAT ASSY REAR	1	1	
3	N9130240	SEAT FOAM FR	1	1	
4	N9130230	SEAT BASE FR	1	1	
5	N9130120	CUSHION SEAT ASSEMBLY	4	4	
6	N8130240	CUSHION SEAT BASE	2	2	
7	N9130270	SEAT FOAM REAR	1	1	
8	N9130260	SEAT BASE REAR	1	1	
9	N9130330	CUSHION SEAT REAR	2	2	
10	K210800	O RING	1	1	
11	N2200500	HEX FLANGE BOLT M6x25 ZNG	4	4	
12	N9123220	SEAT LATCH ASSY.	2	2	
13	N9170360	CABLE SEAT LOCK FRONT	1	1	
14	N9170370	CABLE SEAT LOCK REAR	1	1	

FIG.NO. 23



HANDLE BAR & CABLE ASSY.

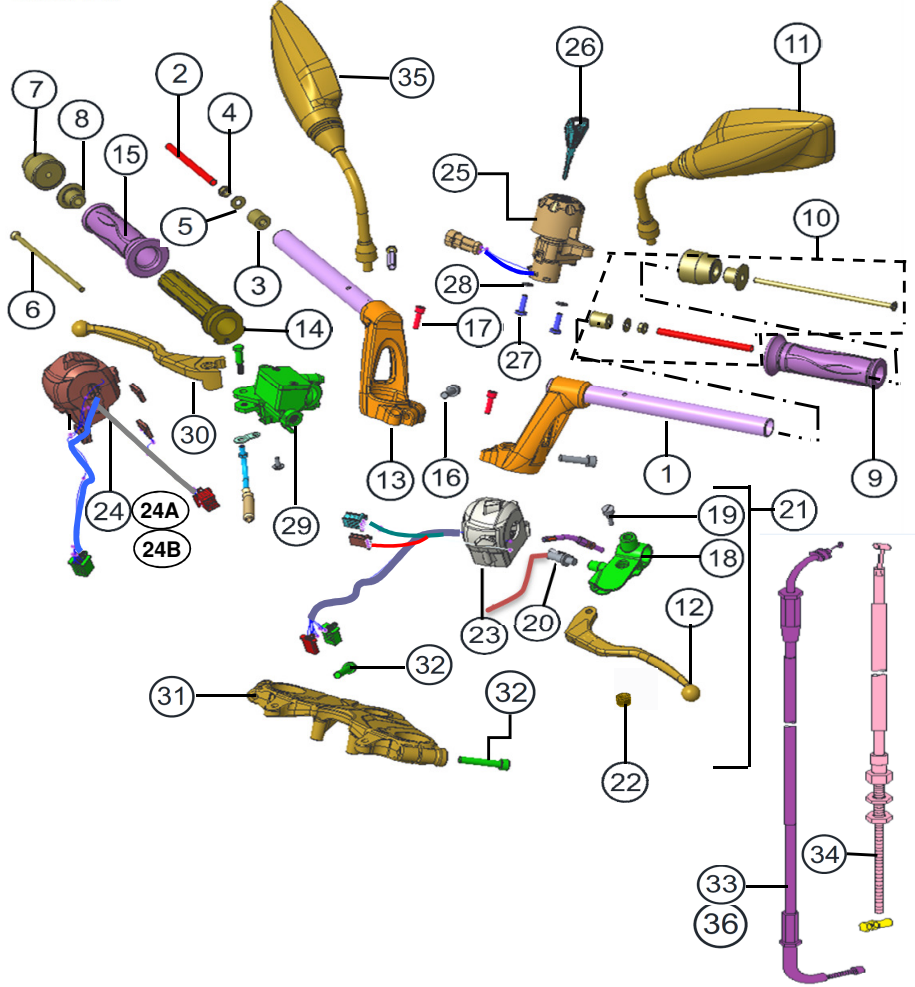
HANDLE BAR & CABLE ASSY.

FIG.NO. 23

REF NO.	PART NO.	DESCRIPTION	NO. OFF		REMARKS
			APACHE 200		
			DISC	EFI DISC	
1	N9151830	HANDLE BAR COMP LH	1	1	
2	N9151190	SPACER DAMPER HANDLE BAR	2	2	
3	N9151210	RETAINER HANDLE BAR	2	2	
4	M1200900	HEX FLANGE NUT M6	2	2	
5	0335608	PUNCHED WASHER 6.5x16.0x1.2 ZNB	2	2	
6	N9200350	CRPH SCREW M6X157	2	2	
7	N9150770	DAMPER WEIGHT HANDLE BAR	2	2	
8	N9151200	SEPARATOR HANDLE BAR-RTR	2	2	
9	N9221070	GRIP LH -RTR	1	1	
10	N9151220	DAMPER ASSY. HANDLE BAR -RTR	2	2	**
11	N9221450	MIRROR ASSY. LH	1	1	
12	N91505203C	CLUTCH LEVER - RTR	1	1	
13	N9151840	HANDLE BAR COMP RH	1	1	
14	N9221160	TUBE GRIP RH	1	1	
15	N9221080	GRIP RH -RTR	1	1	
16	N5200180	HEX SOC HD CAP SCREW M8x30	2	2	
17	N2200470	HEX SOC HD CAP SCR M6x20 P 12.9	2	2	
18	N9150450	HOLDER LH	1	1	
19	N3150280	SPECIAL BOLT M5	1	1	
20	N9160910	CLUTCH SWITCH (ES)	1	1	
21	N91504403C	LEVER ASSY CLUTCH-RTR	1	1	**
22	415021000	HEX LOCK NUT M5 8 ZNB	1	1	
23	N9162400	SWITCH ASSY LH	1	1	
24	N9162210	SWITCH ASSY RH	1	1	
24A	N9162870	SWITCH ASSY. RH	1		BSIV
24B	N9162970	SWITCH ASSY. RH		1	BSIV
25	N9162390	STEERING+IGNITION LOCK	1	1	

** - REFER KIT AND KIT CONTENTS

FIG.NO. 23



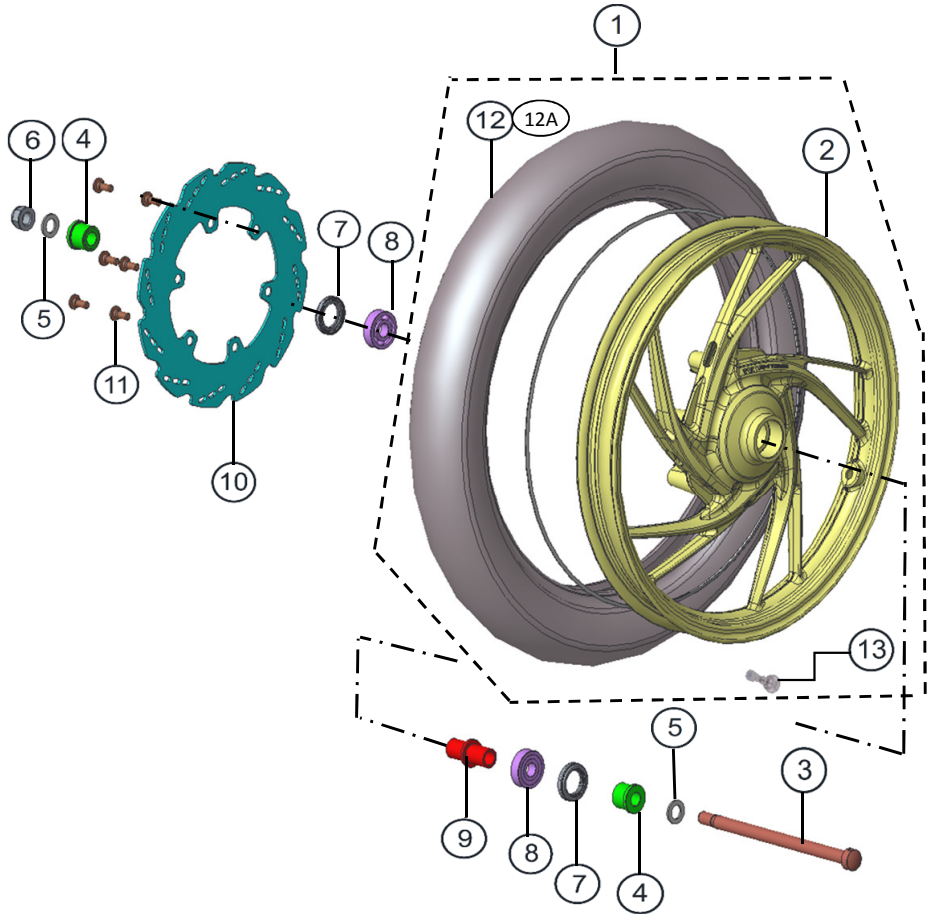
HANDLE BAR & CABLE ASSY.

HANDLE BAR & CABLE ASSY.

FIG.NO. 23

REF NO.	PART NO.	DESCRIPTION	NO. OFF		REMARKS
			APACHE 200		
			DISC	EFI DISC	
26	N9151920	KEY BLANK	1	1	
27	N5200440	HEX SCREW M6X20 4.6 ZNG	2	2	
28	P1200050	WAVE SPRING WASHER 6.5	2	2	
29	N9111140	MASTER CYLINDER ASSY. FRONT	1	1	
30	N9150720	LEVER BRAKE RH DISC	1	1	
31	N9101350	UPPER BRKT .	1	1	
32	N9200410	HEX SOC HD CAP SCREW M8x45	2	2	
33	N9170350	THROTTLE CABLE	1		
34	N9070260	CLUTCH CABLE	1	1	
35	N9221460	MIRROR ASSY. RH	1	1	
36	N9170390	THROTTLE CABLE		1	EFI

FIG.NO. 24



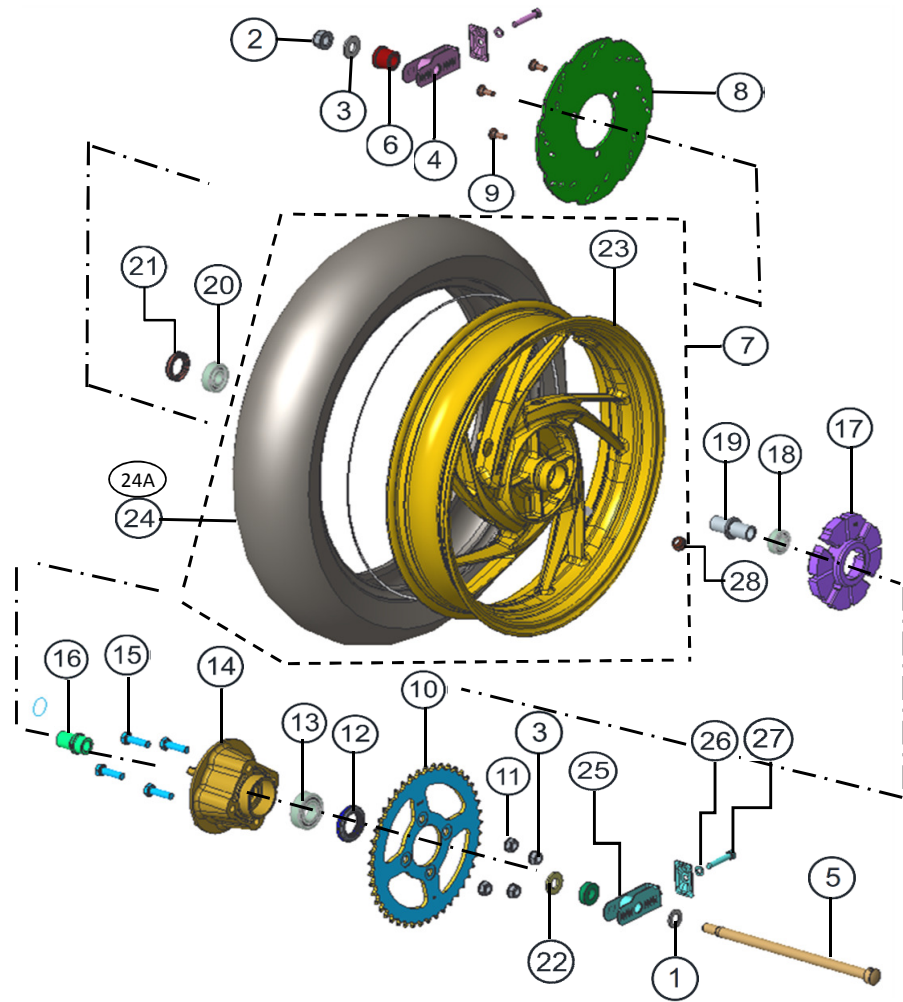
FRONT WHEEL ASSEMBLY

FRONT WHEEL ASSEMBLY

FIG.NO. 24

REF NO.	PART NO.	DESCRIPTION	NO. OFF		REMARKS
			APACHE 200		
			DISC	EFI DISC	
1	N9113960	WHEEL ASSY FRONT DISC TUBELESS	1	1	serviceable
2	N9113950	ALLOY WHEEL 17 275 6 DISC FRONT	1	1	
3	N8111860	AXLE DIA 15 X 250	1	1	
4	N9114130	SPACER AXLE FRONT	2	2	
5	0335708	PUNCHED WASHER 15.5x26x2.3 ZNB	2	2	
6	K200410	M 14 X 1.5 U - NUT	1	1	
7	N7110410	DUST SEAL 1	2	2	
8	1339510	BALL BEARING 15x42x13 C3 6302Z	2	2	
9	1182200	SPACER COMP	1	1	
10	N9111890	DISC PLATE FRONT - RTR	1	1	
11	M7110090	SCREW SPECIAL M8	6	6	
12	N9113680	TYRE TUBELESS 17 90.00 FRONT	1	1	
12A	N9114920	TYRE TUBELESS 17 90.00 FR. PIRELLI	1	1	
13	N9112880	VALVE TUBELESS TYRE	1	1	

FIG.NO. 25



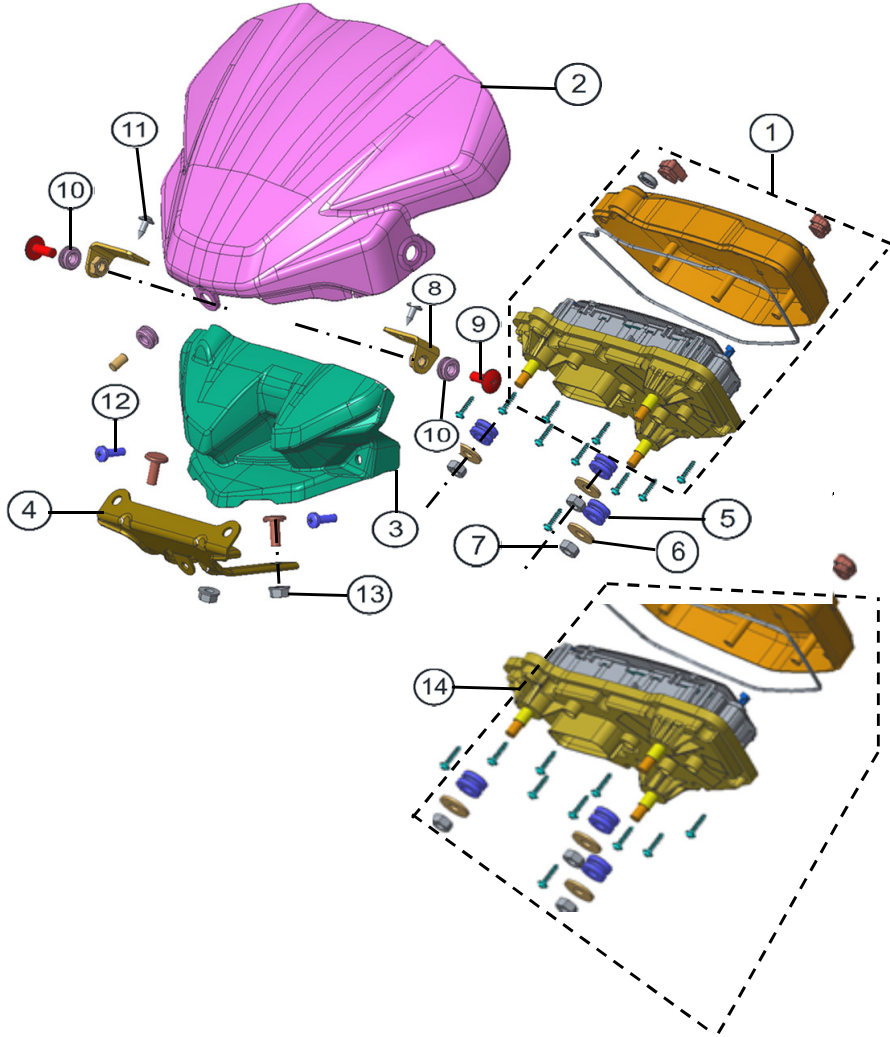
REAR WHEEL ASSEMBLY

REAR WHEEL ASSEMBLY

FIG.NO. 25

REF NO.	PART NO.	DESCRIPTION	NO. OFF		REMARKS
			APACHE 200		
			DISC	EFI DISC	
1	0335708	PUNCHED WASHER 15.5x26x2.3 ZNB	2	2	
2	K200410	M 14 X 1.5 U - NUT	2	2	
3	M7200020	WASHER 14.5x32x3.2	2	2	
4	N9092450	CHAIN ADJUSTOR COMP	2	2	
5	N9110700	REAR AXLE 15x290	1	1	
6	N9114130	SPACER AXLE FRONT	1	1	
7	N9114090	WHEEL ASSY. DISC TUBELESS REAR	1	1	
8	N9114050	DISC PLATE FRONT - RTR	1	1	
9	M7110090	SCREW SPECIAL M8	3	3	
10	N9114000	SPROCKET RR WHEEL 43 60 82 N	1	1	
11	K200570	U NUT 10 X 1.25 FLANGED	4	4	
12	N9114160	DUST SEAL Ø32 X Ø52 X 7	2	2	
13	1339120	BALL BEARING 25x52x15 RS1C3 6205	1	1	
14	N9114020	DRUM RR SPROCKET MC	1	1	
15	S1200630	HEX BOLT M10X1.25X35 8.8 ZNB	4	4	
16	N9113990	SHAFT RR SPROCKET DRUM	1	1	
17	1181150	ABSORBER RR WHEEL HUB SHOCK	1	1	
18	1339510	BALL BEARING 15x42x13 C3 6302Z	1	1	
19	1182200	SPACER COMP	1	1	
20	1339520	BALL BEARING 15x35x11	1	1	
21	N7110410	DUST SEAL 1	1	1	
22	N9114140	SPACER AXLE REAR LH	1	1	
23	N9114670	ALLOY WHEEL 17 300 5 DISC REAR	1	1	
24	N9114040	TYRE TUBELESS 130/70-17 REAR	1	1	
24A	N9114930	TYRE TUBELESS 130/70-17 REAR PIRELLI	1	1	
25	N9092460	CLAMP CHAIN ADJUSTER	2	2	
26	0330318	WAVE SPRING WASHER M8	2	2	
27	N3090240	SCREW M8x45	2	2	
28	N9112880	VALVE TUBELESS TYRE	1	1	

FIG.NO. 26



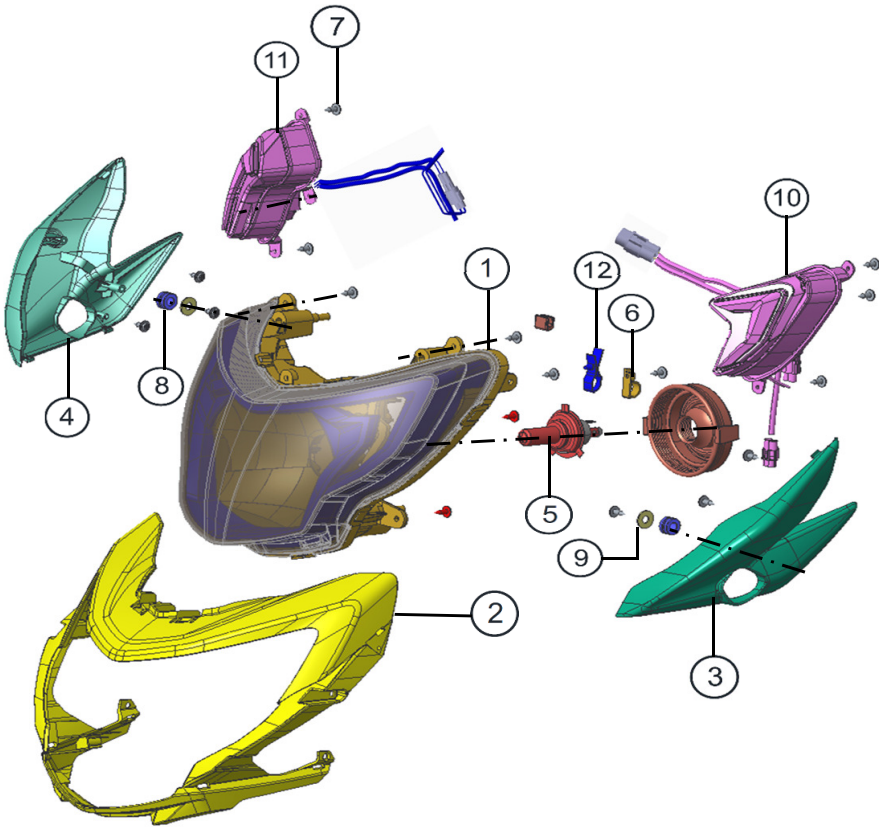
SPEEDOMETER ASSEMBLY

SPEEDOMETER ASSEMBLY

FIG.NO. 26

REF NO.	PART NO.	DESCRIPTION	NO. OFF		REMARKS
			APACHE 200		
			DISC	EFI DISC	
1	N9162130	DIGITAL SPEEDOMETER ASSY.	1	1	
2	N9225810	VISOR HEADLAMP	1	1	
3	N9227530	HOUSING SPEEDOMETER REAR	1	1	
4	N9226290	LICENCE PLATE BRKT FRONT COMP	1	1	
5	N9220760	GROMMET	3	3	
6	0335605	PUNCHED WASHER 6.5x16x1.2	3	3	
7	420305700	HEX NUT M6 8 ZNB	3	3	
8	N9226830	VISOR MTG BRKT COMP	2	2	
9	R1200390	SPL CRR PAN HEAD SCREW M6X16	2	2	
10	N9141000	CUSHION COVER FUEL TANK	3	3	
11	N3200340	CRR FLANGED PAN HD TAP SCREW ST4.2	2	2	
12	M1200660	CRPH SCR M5x16 ZNG	2	2	
13	N7202030	HEX FL NUT M6 100	2	2	
14	N9162480	DIGITAL SPEEDOMETER ASSY. EFI		1	EFI

FIG.NO. 27



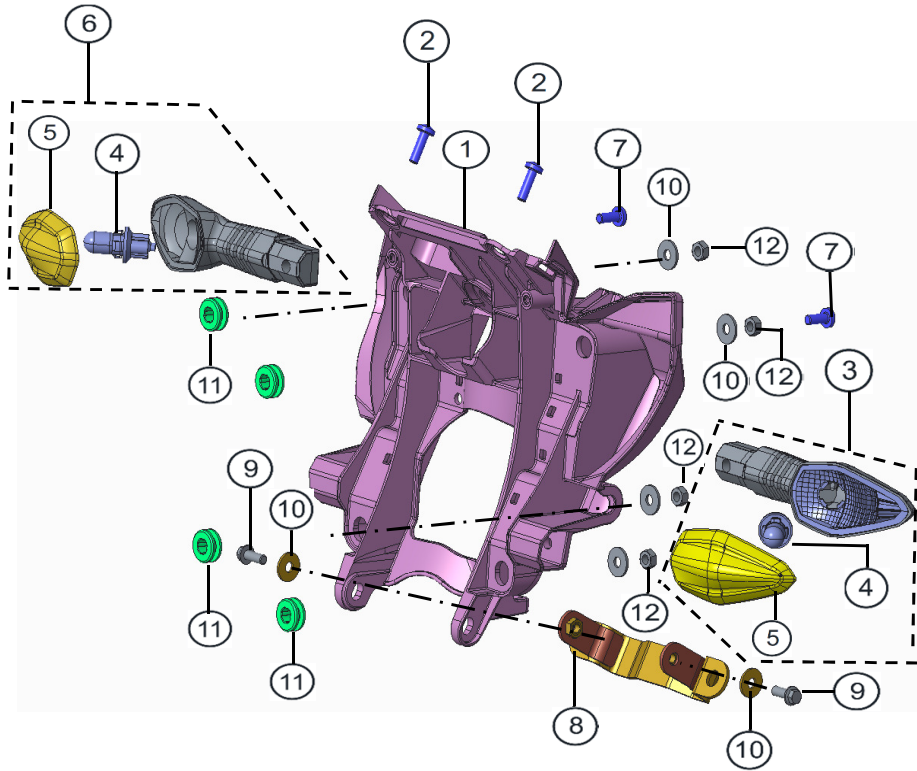
HEADLAMP ASSEMBLY

HEADLAMP ASSEMBLY

FIG.NO. 27

REF NO.	PART NO.	DESCRIPTION	NO. OFF		REMARKS
			APACHE 200		
			DISC	EFI DISC	
1	N9225720	HEADLAMP ASSY.	1	1	
2	---	HOUSING HEADLAMP FR	1	1	refer color
3	---	HOUSING HEADLAMP FRONT LH	1	1	refer color
4	---	HOUSING HEADLAMP FRONT RH	1	1	refer color
5	N3163510	BULB HEADLAMP	1	1	
6	K6321070	CABLE CLAMP PLASTIC	1	1	
7	N3220340	CRR FLANGED PAN HD TAP SCREW S	12	12	
8	N9220760	GROMMET	2	2	
9	0335605	PUNCHED WASHER 6.5x16x1.2	2	2	
10	N9162550	POSITION LAMP ASSY LH	1	1	
11	N9162560	POSITION LAMP ASSY RH	1	1	
12	0258570	CLAMP REAR FENDER	1	1	

FIG.NO. 28



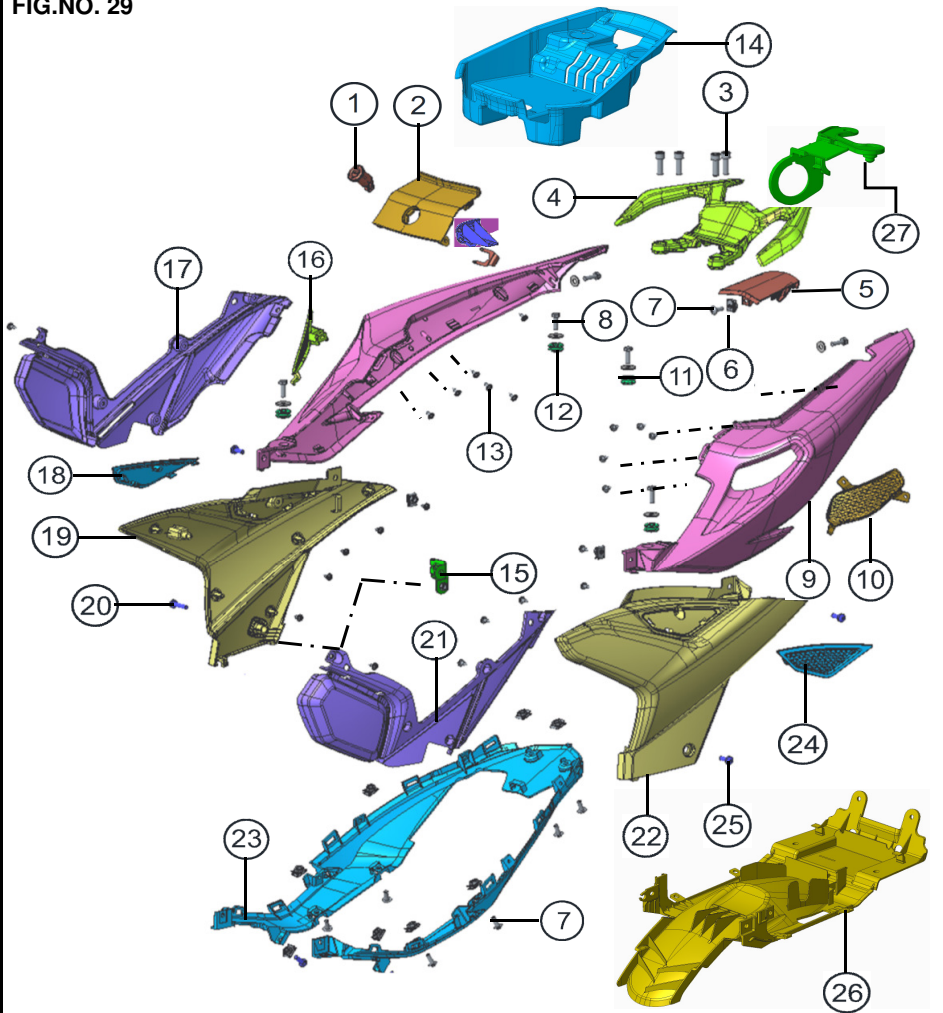
HEADLAMP HOUSING REAR & FRONT TSL ASSY.

HEADLAMP HOUSING REAR & FRONT TSL ASSY.

FIG.NO. 28

REF NO.	PART NO.	DESCRIPTION	NO. OFF		REMARKS
			APACHE 200		
			DISC	EFI DISC	
1	N9227810	BRKT HSG HEADLAMP	1	1	
2	M1200820	CRPH SCR M6x25 5.8	2	2	
3	N9225740	TURN SIGNAL LAMP ASSY. FRONT LH	1	1	
4	N9162650	BULB TSL	2	2	
5	N9325610	LENS COMP	2	2	
6	N9225750	TURN SIGNAL LAMP ASSY FRONT RH	1	1	
7	P1200040	CRPH SCR M6x16 6.8	2	2	
8	N9227570	HEAD LAMP STAY BRKT	1	1	
9	N3200220	HEX FL BOLT M6x16 ZNG	2	2	
10	0335928	PUNCHED WASHER 6.5x18.0x1.6 ZNB	6	6	
11	N9220760	GROMMET	4	4	
12	420305700	HEX NUT M6 8 ZNB	4	4	

FIG.NO. 29



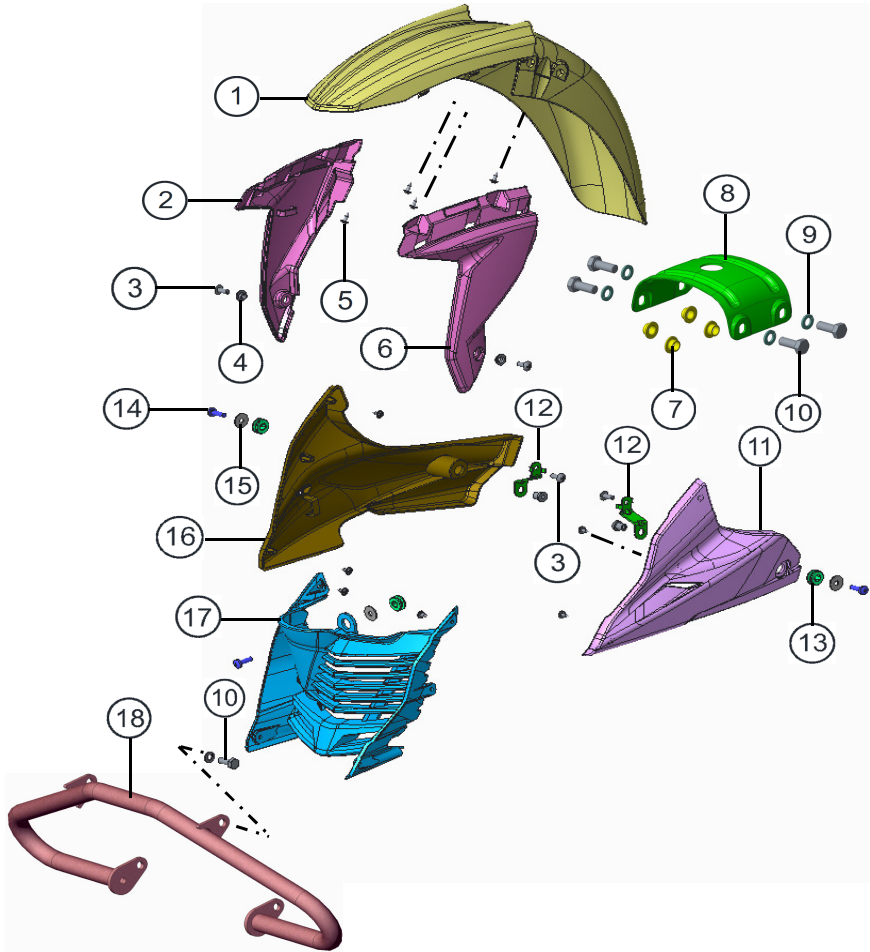
PANEL LH, RH ASSEMBLY

PANEL LH, RH ASSEMBLY

FIG.NO. 29

REF NO.	PART NO.	DESCRIPTION	NO. OFF		REMARKS
			APACHE 200		
			DISC	EFI DISC	
1	N9151970	SEAT LOCK ASSY.	1	1	
2	---	TAIL COVER CENTER FRONT	1	1	REF COLOUR
3	M7100350	HEX SOC HD CAP SCREW M8x25	4	4	
4	N92268998D	PILLION HANDLE	1	1	TIT. GREY
5	---	TAIL COVER CENTER REAR	1	1	"
6	S1200700	RETAINER CLIP COMP. PANEL	11	11	
7	0332275	SCREW - CRPH M6x16 6.8 ZNK	9	9	
8	420462700	HEX SCREW M6X20 8.8 ZNB	6	6	
9	---	TAIL COVER LH	1	1	"
10	N9226940	GRILL TAIL COVER LH	1	1	
11	0335618	PUNCHED WASHER 6.5x20.0x1.6	6	6	
12	N3120130	GROMMET HL	4	4	
13	N3200340	CRR FLANGED PAN HD TAP SCREW ST4.2	22	22	
14	N9228550	UTILITY BOX REAR	1	1	
15	N9227560	BRKT COVER FRAME MTG RH	2	2	
16	N9226950	GRILL TAIL COVER RH	1	1	
17	N92268198D	COVER FRAME FRONT RH	1	1	TIT. GREY
18	N9226930	GRILL COVER FRAME RH	1	1	
19	N92262105D	COVER FRAME RH + TAPE SET	1	1	MAT. BLACK
20	M1200820	CRPH SCR M6x25 5.8 ZNG	1	1	
21	N92268198D	COVER FRAME FRONT LH	1	1	TIT. GREY
22	N92262005D	COVER FRAME LH + TAP SET	1	1	MAT. BLACK
23	N9226840	TAIL COVER BOTTOM LH	1	1	"
24	N9226920	GRILL COVER FRAME LH	1	1	
25	R1200390	SPL CRR PAN HEAD SCREW M6X16	1	1	
26	N9226870	BODY FRONT FENDER REAR ASSY	1	1	
27	N9127780	BRKT MOBILE CHARGER	1	1	

FIG.NO. 30

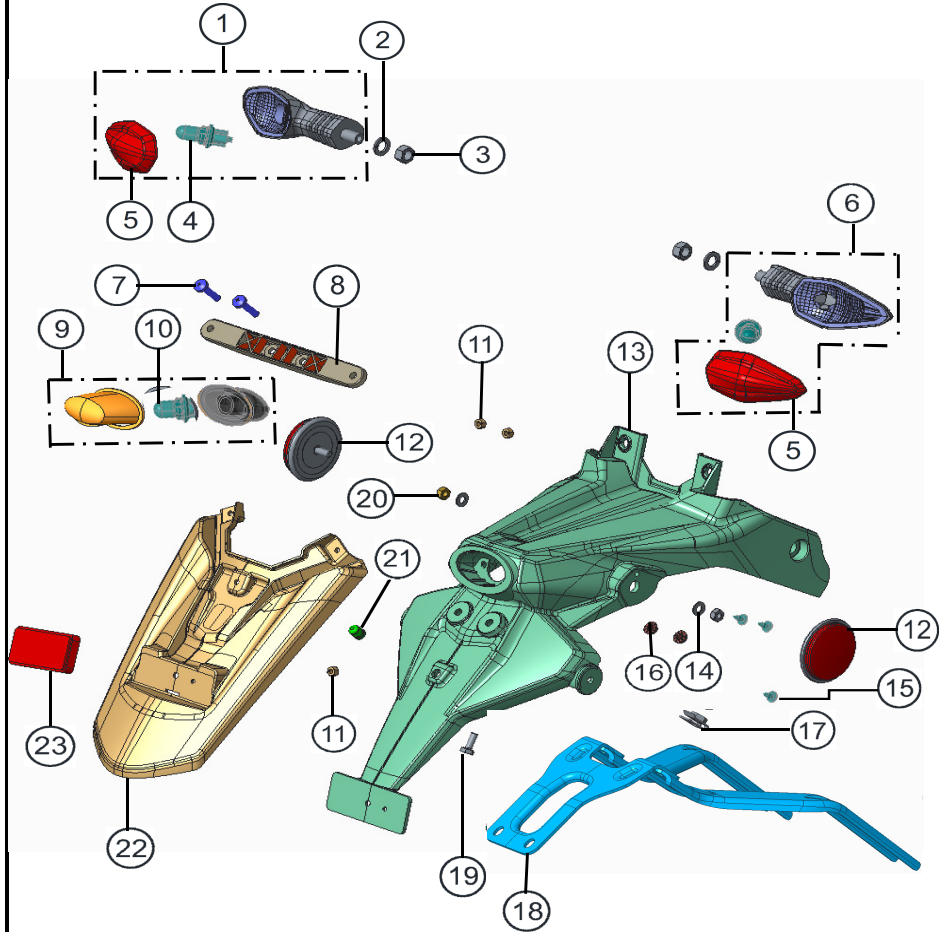


FRONT FENDER ASSEMBLY

FIG.NO. 30

REF NO.	PART NO.	DESCRIPTION			REMARKS
			DISC	EFI DISC	
1	---	FRONT FENDER TOP	1	1	REF COLOUR
2	N92260895D	FRONT FENDER RH	1	1	MAT. BLACK
3	0332275	SCREW - CRPH M6x16 6.8 ZNK	4	4	
4	R1200260	CUP WASHER	2	2	
5	N3200340	CRR FLANGED PAN HD TAP SCREW ST4.2x13	10	10	
6	N92260795D	FRONT FENDER LH	1	1	MAT. BLACK
7	M7101020	SPACER FRONT FENDER	4	4	
8	M7100370	BRACE FENDER	1	1	
9	330318	WAVE SPRING WASHER M8	4	4	
10	420454700	HEX SCREW M8X20 8.8	4	4	
11	---	ENGINE GUARD LH	1	1	REF COLOUR
12	N9227540	BRKT ENGINE GUARD MTG LH	2	2	
13	N3120130	GROMMET HEADLAMP	3	3	
14	N5200440	HEX SCREW M6X20 4.6	2	2	
15	N5200480	PUNCHED WASHER 6.5x20x1.6	3	3	
16	---	ENGINE GUARD RH	1	1	REF COLOUR
17	N9225929	ENGINE GUARD CENTER	1	1	
18	N9223280	CRASHGUARD COMP (APACHE REFRESH)	1	1	
19	N9229420	MUFFLER GUARD CENTER	1	1	

FIG.NO. 31



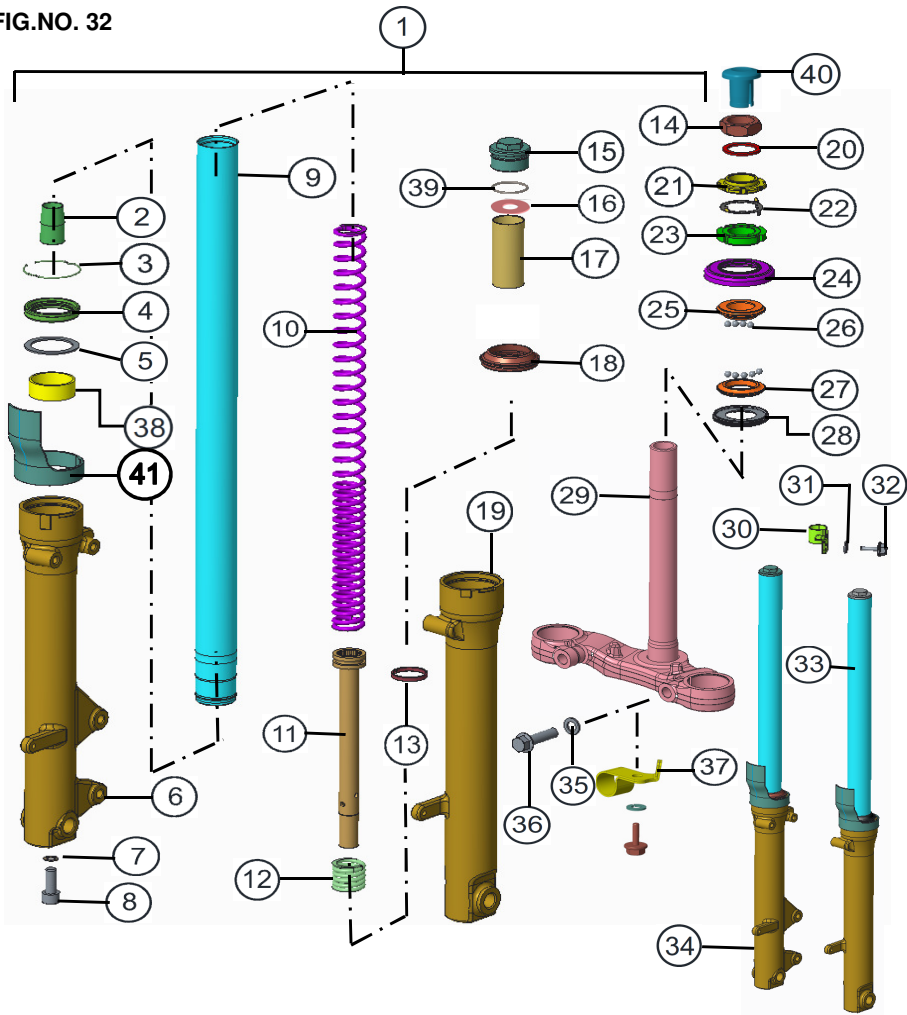
REAR FENDER & TSL REAR ASSEMBLY

REAR FENDER & TSL REAR ASSEMBLY

FIG.NO. 31

REF NO.	PART NO.	DESCRIPTION	NO. OFF		REMARKS
			APACHE 200		
			DISC	EFI DISC	
1	N9225760	TURN SIGNAL LAMP ASSY. RR LH	1	1	
2	0330328	WAVE SPRING WASHER M10 ZNG	2	2	
3	0334038	HEX NUT M10 8 ZNB	2	2	
4	N9162650	BULB	2	2	
5	N9325610	LENS TSL ASSY.	2	2	
6	N9225770	TURN SIGNAL LAMP ASSY. RR RH	1	1	
7	K200700	CRPH SCR M6x25 8.8 ZNBH	2	2	
8	N3220910	BRKT LICENCE PLATE REAR	1	1	
9	N9220490	NUMBER PLATE ILLUMINATOR	1	1	
10	5227360	BULB 12V 3.4W	1	1	
11	420302700	HEX NUT M5	3	3	
12	N9227200	REFLEX REFLECTOR	2	2	
13	N9225850	FENDER REAR	1	1	
14	0335936	PUNCHED WASHER 6.5x13x1	2		
15	N3200340	CRR FLANGED PAN HD TAP SCREW ST4.2	3		
16	0334146	NUT LICENSE PLATE BRACKET	2	2	
17	K3200840	RETAINER CLIP NUT M6	2	2	
18	N9227140	BRKT FENDER REAR	1	1	
19	420453700	HEX SCREW M6x12	2	2	
20	P1200060	HEX NUT M6	2		
21	N4221270	RUBBER TOOL BOX	1	1	
22	N9226880	FLAP REAR FENDER	1		
23	M7160120	REFLEX REFLECTOR	1	1	

FIG.NO. 32



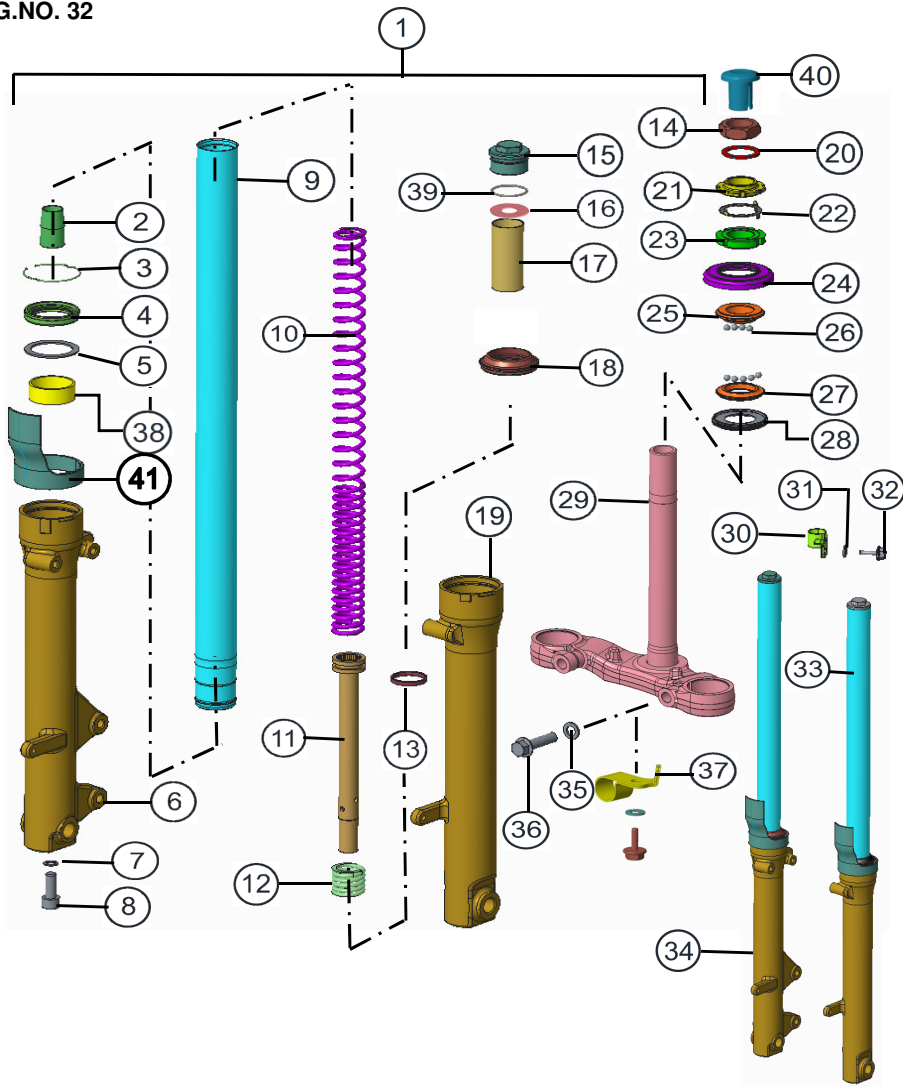
FRONT FORK ASSEMBLY - DISC

FRONT FORK ASSEMBLY - DISC

FIG.NO. 32

REF NO.	PART NO.	DESCRIPTION	NO. OFF		REMARKS
			APACHE 200		
			DISC	EFI DISC	
1	N9101500	FORK ASSY FRONT	1	1	
2	N9322530	SPINDLE TAPPER	2	2	
3	N9322480	SNAP RING	2	2	
4	N9322510	OIL SEAL FRONT FORK	2	2	
5	N9322560	WASHER DU BUSH	2	2	
6	N9101260	OUTER TUBE COMP. RH	1	1	
7	G7200070	COPPER WASHER 10x16x1	2	2	
8	N9200250	HEX SOC HD CAP SCREW M10x25	2	2	
9	N9101270	INNER TUBE ASSY.	2	2	
10	N9322470	SPRING FRONT FORK	2	2	
11	N9322520	CYLINDER PISTON FRONT FORK	2	2	
12	N9322580	REBOUND SPRING	2	2	
13	N9322550	RING DAMPER PISTON	2	2	
14	410058700	LOCK NUT STEERING	1	1	
15	N9101280	CAP NUT	2	2	
16	N9322570	WASHER SPRING SEAT	2	2	
17	N9322590	SPACER	2	2	
18	N9322490	DUST SEAL FRONT FORK	2	2	
19	N9101250	OUTER TUBE COMP. LH	1	1	
20	410043000	SPECIAL WASHER	1	1	
21	N9101520	ARRESTOR STEERING STEM TOP	1	1	
22	N9101530	LOCK WASHER ARRESTO STEERING	1	1	
23	0254088	ARRESTOR STEERING STEM	1	1	
24	N9101480	DUST SEAL UPPER	1	1	
25	N9101600	CONE TOP	1	1	
26	K3200450	STEERING BALL	36	36	
27	N9101300	CONE BOTTOM	1	1	

FIG.NO. 32



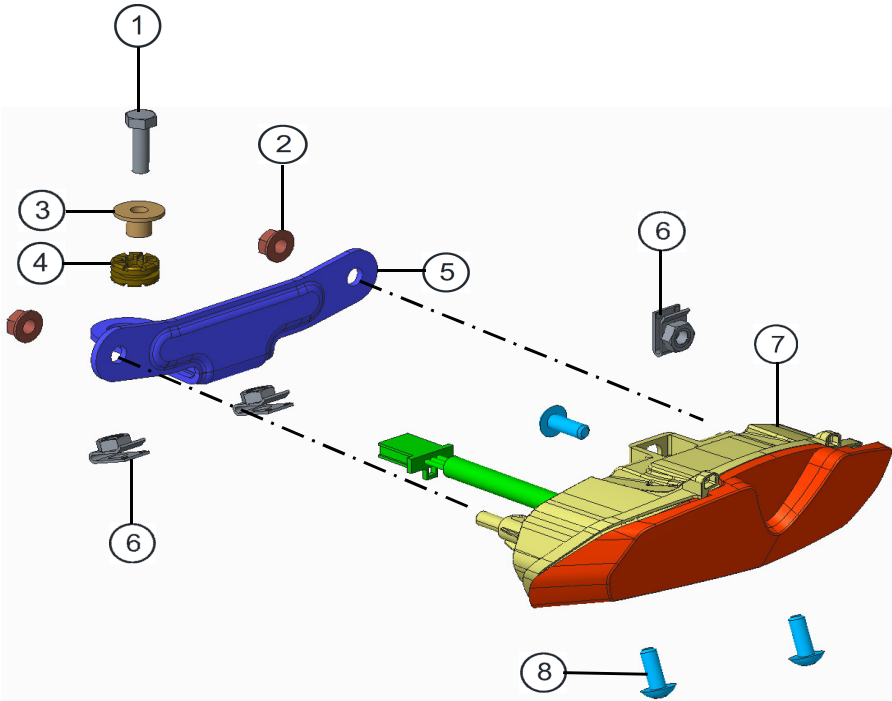
FRONT FORK ASSEMBLY - DISC

FRONT FORK ASSEMBLY - DISC

FIG.NO. 32

REF NO.	PART NO.	DESCRIPTION	NO. OFF		REMARKS
			APACHE 200		
			DISC	EFI DISC	
28	N9101580	DUST SEAL STEERING LOWER	1	1	
29	N9101200	LOWER BRKT COMP	1	1	
30	N9111220	CLAMP BRAKE HOSE	1	1	
31	P1200050	WAVE SPRING WASHER 6.5	2	2	
32	M1200520	HEX FL BOLT M6x16	2	2	
33	N9101230	LEG ASSY FRONT LH	1	1	
34	N9101240	LEG ASSY FRONT RH	1	1	
35	0330328	WAVE SPRING WASHER M10	2	2	
36	R1200160	HEX FL BOLT M10X1.25X40	2	2	
37	N9114740	CLAMP HOSE FRONT	1	1	
38	N9101540	DU BUSH	2	2	
39	N9101290	O RING	2	2	
40	N9101690	CAP LOCK NUT	1	1	
41	N9101700	COVER FORK TUBE	2	2	

FIG.NO. 33



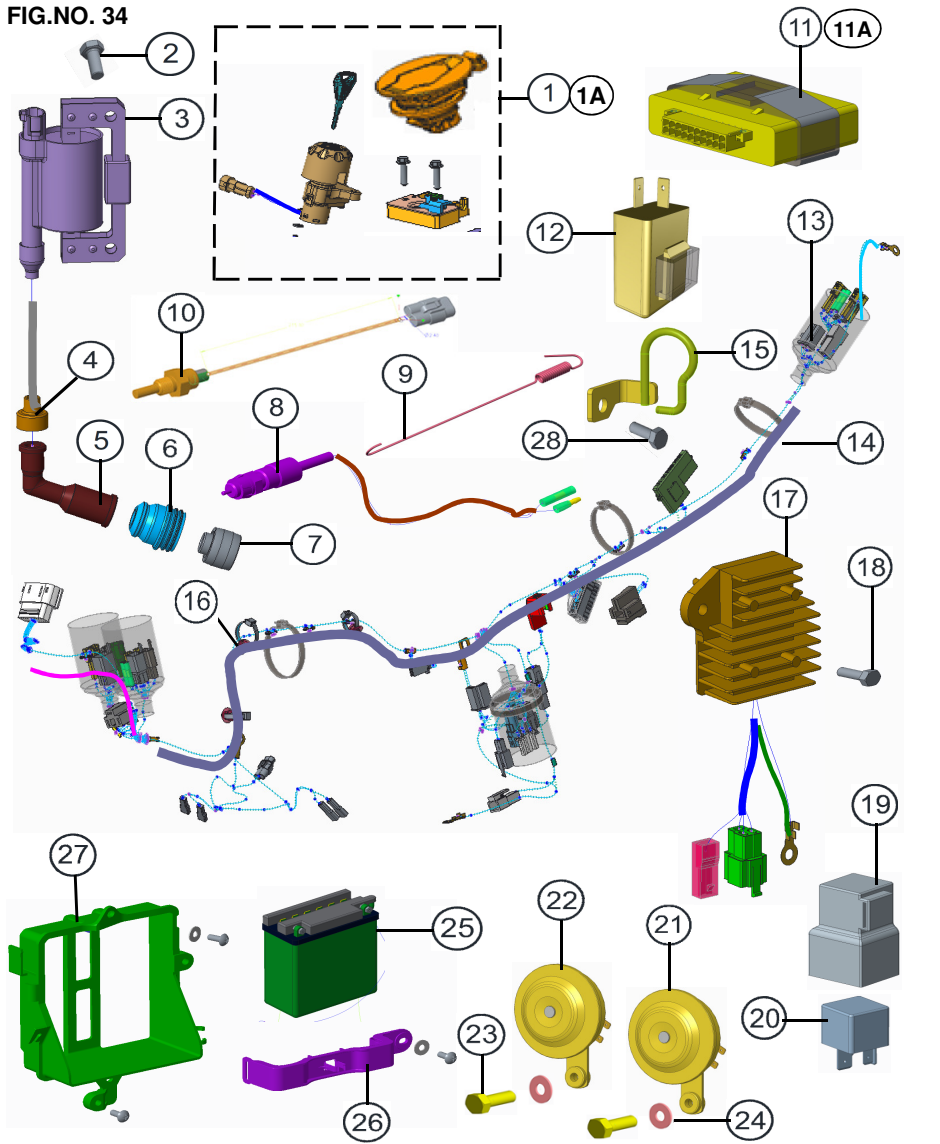
REAR LAMP ASSEMBLY

REAR LAMP ASSEMBLY

FIG.NO. 33

REF NO.	PART NO.	DESCRIPTION	NO. OFF		REMARKS
			APACHE 200		
			DISC	EFI DISC	
1	420462700	HEX BOLT M6x20	1	1	
2	M1200900	HEX FLANGE NUT M6	2	2	
3	N8122610	CUP WASHER	1	1	
4	N8220180	GROMMET TAIL COVER	1	1	
5	N9227590	BRACKET TAIL LAMP	1	1	
6	S1200700	RETAINER CLIP COMP. PANEL	2	2	
7	N9225730	TAIL LAMP ASSY.	1	1	
8	0332275	CRR PAN HEAD SCREW M6x16	3	3	

FIG.NO. 34



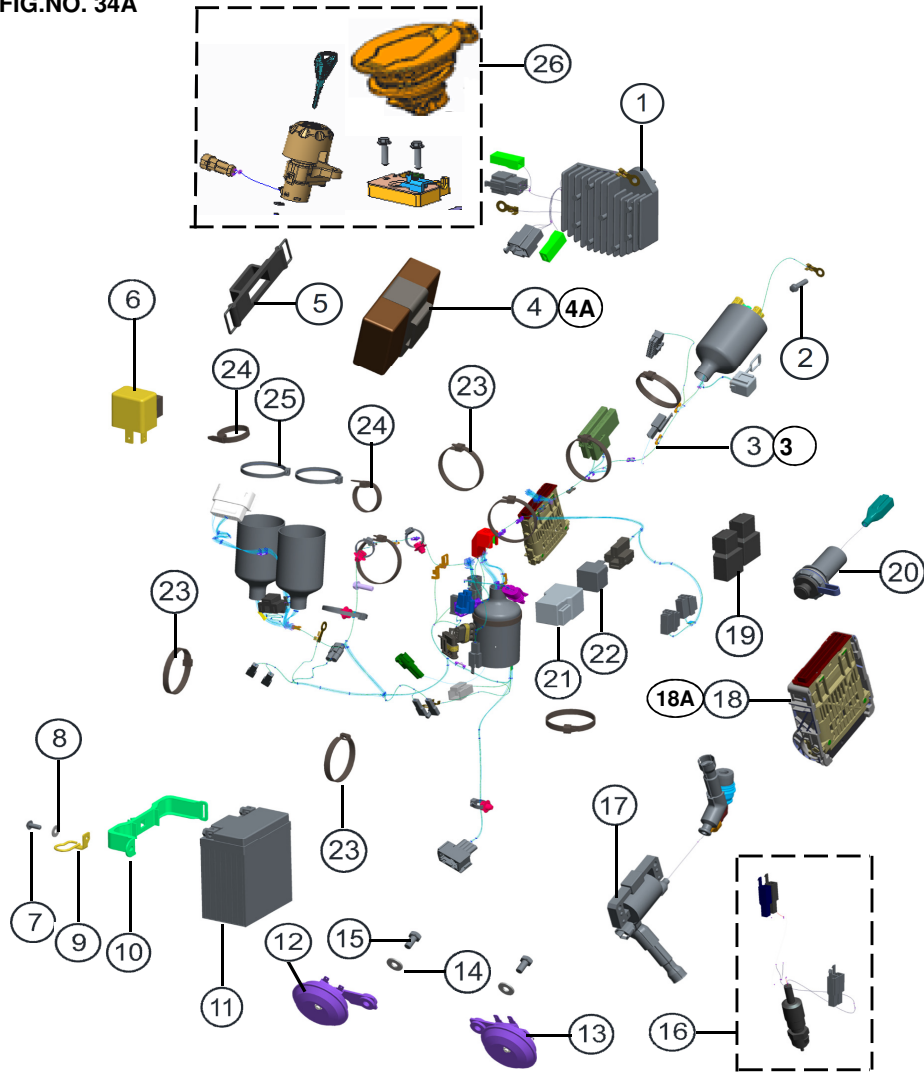
WIRING HARNESS & BATTERY ASSY.

WIRING HARNESS & BATTERY ASSY.

FIG.NO. 34

REF NO.	PART NO.	DESCRIPTION	NO. OFF		REMARKS
			APACHE 200		
			DISC	EFI DISC	
1	N9151910	LOCK SET	1		
1A	N9152230	LOCK SET	1	1	BSIV
2	M1200510	HEX FLANGE BOLT M6x25	1		
3	N9060770	IGNITION COIL	1		
4	R1060200	SEAL HIGH TENSION	1		
5	N3060150	SUPPRESSOR CAP	1		
6	N9060870	GROMMET SPARK PLUG	1		
7	N3060410	SEAL SPARK PLUG	1		
8	N9160900	SWITCH ASSY STOP LAMP	2		
9	N8111110	SPRING STOP LAMP SWITCH	1		
10	R4060090	THERMAL SENSOR	1		
11	N9060650	TCI UNIT	1		
11A	N9060910	TCI UNIT	1		BSIV
12	N9160380	ELECTRONIC FLASHER UNIT	1		
13	N9162180	WIRING HARNESS	1		
14	N3160340	CLAMP WIRING HARNESS BIG SIZE	1		
15	N9142110	GUIDE HOSE COMP	1		
16	N3160310	CLAMP HANDLE SWITCH HARNESS	1		
17	N9060670	REGULATOR CUM RECTIFIER	1		
18	M1200510	HEX FLANGE BOLT M6x25	1		
19	N9162500	BOOT STARTER RELAY	1		
20	N9162470	STARTER RELAY	1		
21	N9160850	HORN LH	1		
22	N9160840	HORN RH	1		
23	420454700	HEX SCREW M8X20 8.8	2		
24	G5200400	PUNCHED WASHER 8.5 x 20 x 2	2		
25	N9162710	BATTERY CHARGED 90	1		
26	N9122690	CLAMP BATTERY 9 AH	1		
27	N9125310	BATTERY HOLDER	1		
28	M1200520	HEX FLANGE BOLT M6x16	1		
29	N9162420	CORD SET EARTH	1		

FIG.NO. 34A



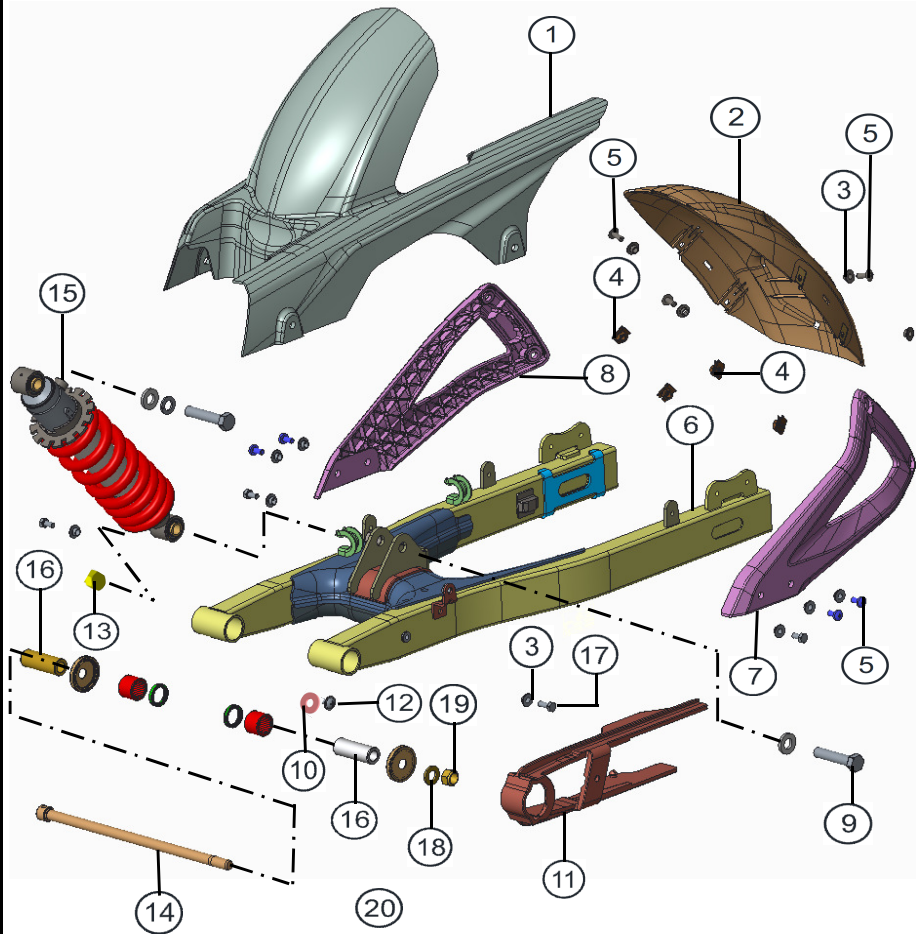
WIRING HARNESS & BATTERY ASSY. EFI

WIRING HARNESS & BATTERY ASSY. EFI

FIG.NO. 34A

REF NO.	PART NO.	DESCRIPTION	NO. OFF		REMARKS
			APACHE 200		
			DISC	EFI DISC	
1	N9162410	REGULATOR DC		1	
2	M1200510	HEX FLANGE BOLT M6x25		1	
3	N9162190	WIRING HARNESS EFI		1	
3A	N9162930	WIRING HARNESS EFI		1	BSIV
4	N9162490	CONTROL UNIT		1	
4A	N9162960	CONTROL UNIT		1	BSIV
5	K6160300	BAND BATTERY		1	
6	N9160380	ELECTRONIC FLASHER UNIT		1	
7	0332275	SCREW - CRPH M6x16 6.8 ZNK		1	
8	0335608	PUNCHED WASHER 6.5x16.0x1.2 ZNB		1	
9	N9142110	GUIDE HOSE COMP		1	
10	N9122690	CLAMP BATTERY 9 AH		1	
11	N9162620	BATTERY CHARGED 70		1	
12	N9160840	HORN RH		1	
13	N9160850	HORN LH		1	
14	G5200400	PUNCHED WASHER 8.5 x 20 x 2		2	
15	420477000	HEX SCREW M8X16 8.8 ZNB		2	
16	N9160900	SWITCH ASSY STOP LAMP		1	
17	N9060740	IGNITION COIL ASSY		1	
18	N9060819	ECU UNIT		1	
18A	N9060940	ECU UNIT		1	BSIV
19	N9161260	RELAY PASS BY ASSY		1	
20	R4160240	SOCKET MOBILE CHARGER		1	
21	N9162500	BOOT STARTER RELAY		1	
22	N9162470	STARTER RELAY		1	
23	N3160340	CLAMP WIRING HARNESS BIG SIZE		3	
24	N3160310	CLAMP HANDLE SWITCH HARNESS		2	
25	N7160620	CABLE STRAP		2	
26	N9151910	LOCK SET		1	

FIG.NO. 35



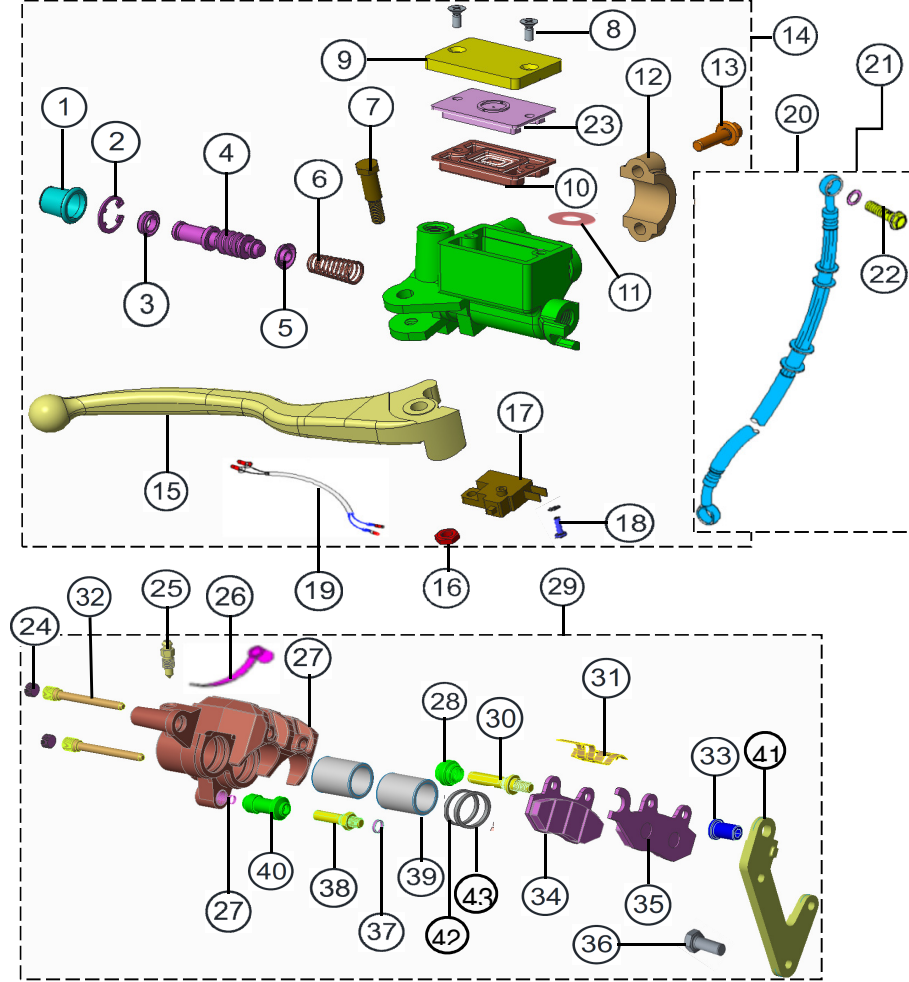
SWINGARM ASSEMBLY

SWINGARM ASSEMBLY

FIG.NO. 35

REF NO.	PART NO.	DESCRIPTION	NO. OFF		REMARKS
			APACHE 200		
			DISC	EFI DISC	
1	N9092620	WHEEL HUGGER CUM CHAIN COVER	1	1	
2	N9092710	WHEEL HUGGER	1	1	
3	N9051860	CUP WASHER	12	12	
4	K3200840	RETAINER CLIP NUT M6	4	4	
5	P200270	SCREW	4	4	
6	N9092390	SWINGARM COMP. (WITH BUSH)	1	1	
7	N9092700	LEG HUGGER RH	1	1	
8	N9092690	LEG HUGGER LH	1	1	
9	G2200170	HEX BOLT M12x1.75x55	2	2	
10	0335608	PUNCHED WASHER 6.5x16.0x1.2	1	1	
11	N9092440	BUFFER CHAIN	1	1	
12	0332275	SCREW - CRPH M6x16 6.8	1	1	
13	G2200470	HEX NUT M12x1.75	1	1	
14	N5111210	AXLE 12*275	1	1	
15	M7091000	SHOCK ABSORBER ASSY	1	1	
16	N9092430	BUSH SWINGARM	2	2	
17	420464700	HEX SCREW M6X16 8.8	2	2	
18	0335538	PUNCHED WASHER 12.5x22x2.3	1	1	
19	0334158	NUT REAR SWING ARM PIVOT	1	1	

FIG.NO. 36



DISC BRAKE ASSEMBLY - FRONT

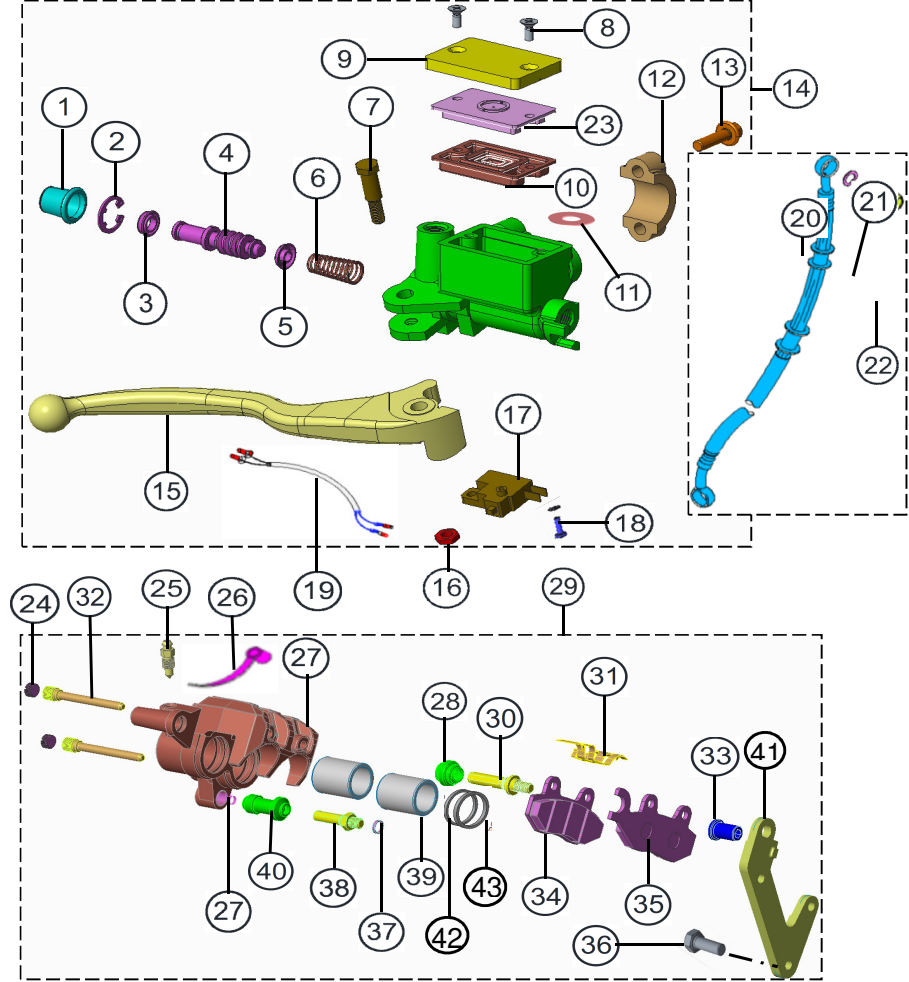
DISC BRAKE ASSEMBLY - FRONT

FIG.NO. 36

REF NO.	PART NO.	DESCRIPTION	NO. OFF		REMARKS
			APACHE 200		
			DISC	EFI DISC	
1	---	BOOTS ASSEMBLY	1	1	REF. KIT. No. N9322840
2	---	SNAP RING	1	1	"
3	---	S CUP	1	1	"
4	---	PISTON	1	1	"
5	---	P CUP	1	1	"
6	---	SPRING	1	1	"
7	---	HAND LEVER BOLT	1	1	N9321500
8	---	SCREW RESERVOIR CAP	2	2	N9321530
9	---	RESERVOIR CAP	1	1	"
10	N9322010	DIAPHRAGM	1	1	N9322840
11	---	PROTECTOR	1	1	"
12	---	HOLDER	1	1	N9321510
13	---	HOLDER BOLT	2	2	"
14	N91111403C	ASSY. MASTER CYLINDER	1	1	
15	---	LEVER RH	1	1	N9322020
16	---	FLANGE NUT	1	1	
17	---	SWITCH ASSY	1	1	N9321520
18	---	SCREW & WASHER	1	1	"
19	---	SUB HARNESS	1	1	"
20	---	HOSE COMP BRAKE	1	1	N9322030
21	N9111330	GASKET	4	4	N9321540
22	N9111320	BANJO BOLT	2	2	"
23	---	PLATE DIAPHRAGM	1	1	
24	---	PLUG PIN	2	2	
25	---	BLEEDER	1	1	N9321600
26	---	CAP BLEEDER	1	1	N9321600
27	---	BODY CALIPER COMP.	1	1	
28	---	BOOT B	1	1	N9321550

N9325270

FIG.NO. 36



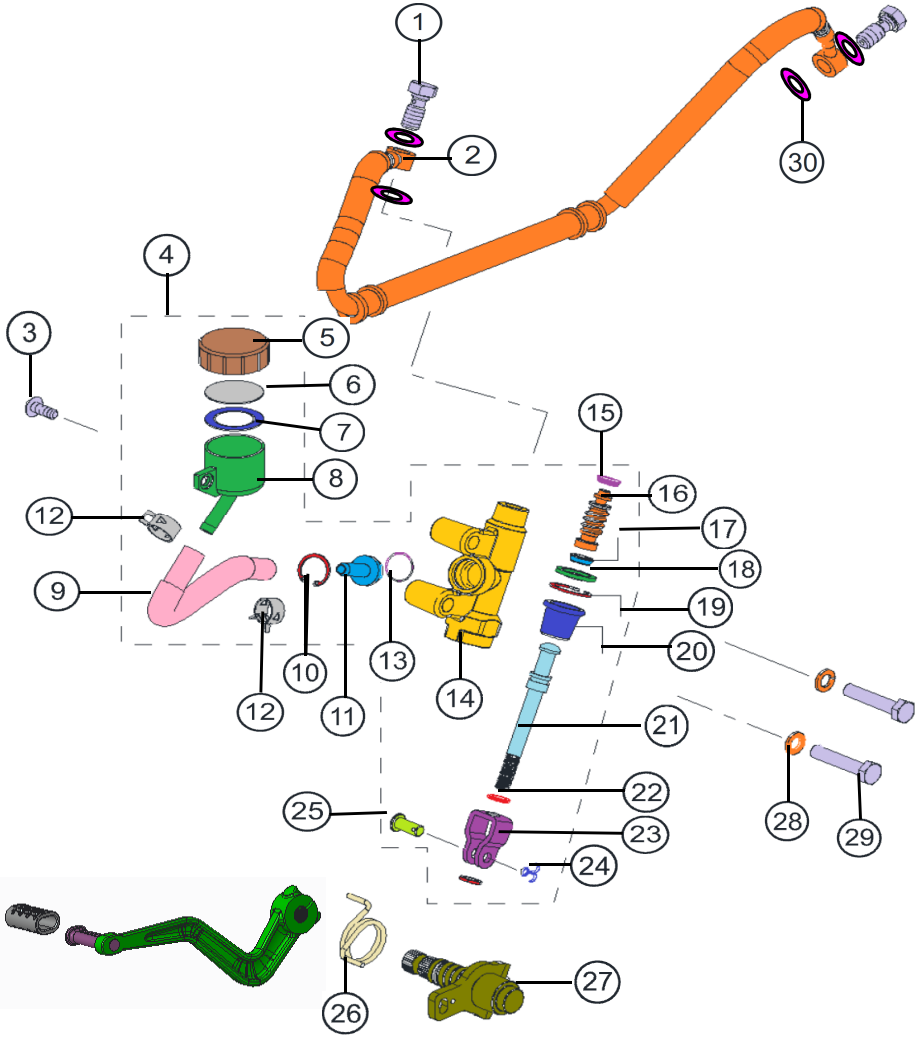
DISC BRAKE ASSEMBLY - FRONT

DISC BRAKE ASSEMBLY - FRONT

FIG.NO. 36

REF NO.	PART NO.	DESCRIPTION	NO. OFF		REMARKS
			APACHE 200		
			DISC	EFI DISC	
29	N9111930	CALIPER ASSY.	1	1	
30	---	PIN BOLT A	1	1	N9321550
31	---	SPRING PAD	1	1	"
32	---	PIN HANGER	2	2	"
33	---	INNER HEX NUT	1	1	N9321570
34	---	PAD COMP INNER	1	1	N9111300
35	---	PAD COMP OUTER	1	1	"
36	U2200010	HEX FLANGE BOLT M8x27	2	2	
37	---	SPRING WASHER	1	1	N9321570
38	---	PIN BOLT B	1	1	N9321550
39	---	PISTON CALIPER	2	2	"
40	---	BUSH BOOT PIN	1	1	"
41	---	BRACKET COMP FRONT	1	1	N9321570
42	---	DUST SEAL 1	2	2	N9321550
43	---	DUST SEAL 2	2	2	"

FIG.NO. 37



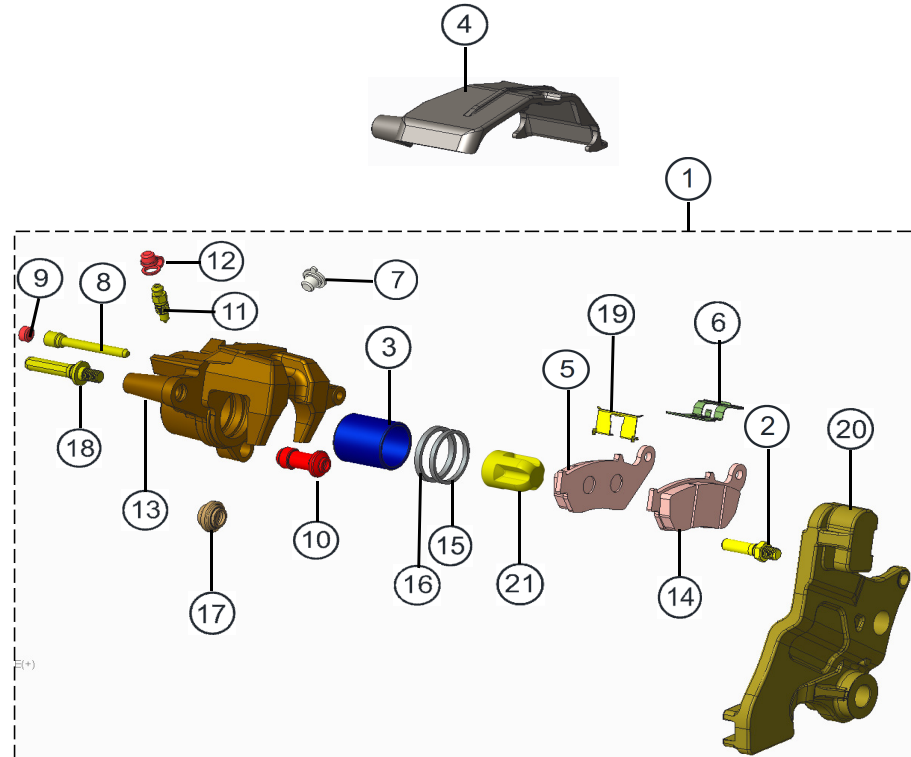
MASTER CYLINDER ASSY. RR DISC BRAKE

MASTER CYLINDER ASSY. RR DISC BRAKE

FIG.NO. 37

REF NO.	PART NO.	DESCRIPTION	NO. OFF		REMARKS
			APACHE 200		
			DISC	EFI DISC	
1	M7110330	BANJO BOLT	2	2	REF. KIT. No.
2	N9111430	BRAKE HOSE & OIL RESERVOIR	1	1	
3	0332275	CRR PAN HEAD SCREW	1	1	
4	N9112070	MASTER CYLINDER ASSY. RR DISC BR.	1	1	
5	---	CAP OIL TANK	1	1	N9322270
6	---	PLATE DIAPHRAGM	1	1	"
7	---	DIAPHRAGM	1	1	"
8	---	OIL TANK	1	1	"
9	---	HOSE OIL	1	1	N9322260
10	---	CIRCLIP	1	1	"
11	---	INSERT (LOOSE FITTING)	1	1	"
12	---	BUCKLE HOSE	2	2	"
13	---	O RING	1	1	"
14	---	M/C BODY REAR	1	1	"
15	---	CUP PRIMARY	1	1	"
16	---	PISTON M/C REAR	1	1	"
17	---	CUP SECONDARY	1	1	"
18	---	STOP PLATE	1	1	"
19	---	CIRCLIP	1	1	"
20	---	BOOT COMP.	1	1	"
21	---	BUSH ROD	1	1	"
22	---	NUT ROD	2	2	"
23	---	JOINT ROD	1	1	"
24	---	COTTER PIN	1	1	"
25	---	PIN	1	1	"
26	N9114650	SPRING BRAKE RETURN	1	1	
27	N9111840	SHAFT COMP. BRAKE PEDAL	1	1	
28	0330318	SPRING WASHER	2	2	
29	420955700	HEX SCREW M8x40	2	2	
30	N9111330	GASKET	4	4	

FIG.NO. 38



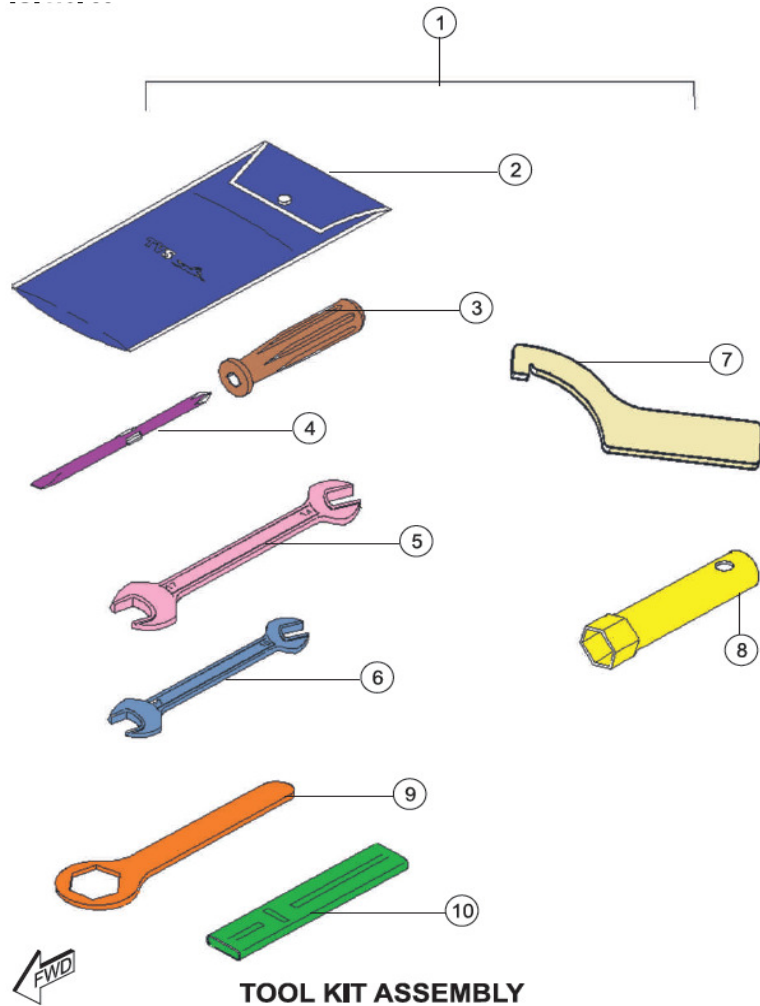
CALIPER DISC BRAKE REAR ASSY.

CALIPER DISC BRAKE REAR ASSY.

FIG.NO. 38

REF NO.	PART NO.	DESCRIPTION	NO. OFF		REMARKS
			APACHE 200		
			DISC	EFI DISC	
					REF. KIT. No.
1	N9114110	CALIPER DISC BRAKE REAR ASSY.	1	1	
2	---	PIN BOLT B	1	1	N9324600
3	---	PISTON CALIPER	1	1	N9322190
4	N9113410	COVER DISC REAR	1	1	
5	---	PAD COMP INNER	1	1	N9113780
6	---	PAD SPRING	1	1	N9322190
7	---	PLUG	1	1	"
8	---	PIN HANGER	1	1	"
9	---	PLUG PIN	1	1	"
10	---	BOOT B	1	1	"
11	---	BLEEDER	1	1	N9322250
12	---	CAP BLEEDER	1	1	"
13	---	BODY CALIPER REAR	1	1	N9322190
14	---	PAD COMP OUTER	1	1	N9113780
15	---	SEAL PISTON	1	1	N9322190
16	---	DUST SEAL	1	1	"
17	---	BUSH BOOT PIN	1	1	"
18	---	PIN BOLT A	1	1	N9324600
19	---	PLATE BRKT	1	1	"
20	---	BRKT COMP REAR	1	1	"
21	N9324500	DAMPER PISTON CALIPER REAR	1	1	

FIG.NO. 39



TOOL KIT ASSEMBLY

FIG.NO. 39

REF NO.	PART NO.	DESCRIPTION	NO. OFF		REMARKS
			APACHE 200		
			DISC	EFI DISC	
1	N9212270	TOOL KIT SET	1	1	